



Eden 18

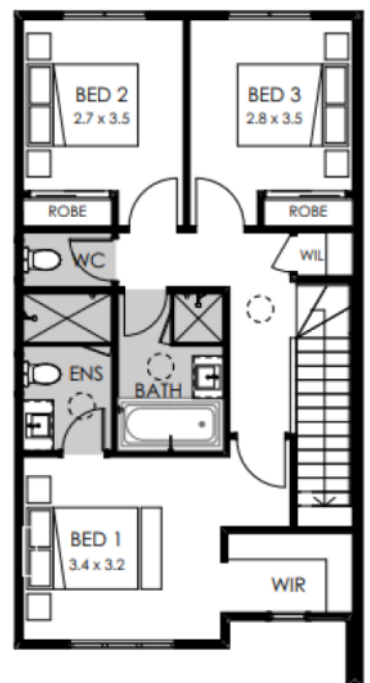
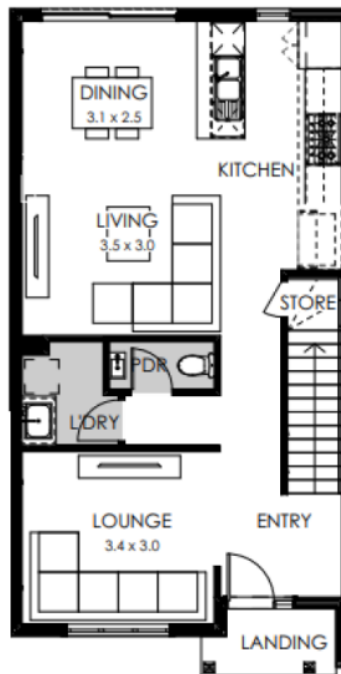
Fixed Price **\$619,900**

Lot 9819 Rubus Walk, Harpley - Werribee

Land size: 146m²



- Architectural Aspen façade
- Heating & Cooling
- Double Glazing
- Exposed aggregate outdoor paving
- Stone benchtops
- 2550mm high ceilings
- LED lights
- Roller blinds
- 900mm wide ILVE appliances
- Soft closers to all kitchen, laundry and vanity drawers & doors
- 25 Year Structural Guarantee
- 12 Month Maintenance
- Black Fittings, Fixtures & Tapware.
- Downlights throughout.
- Flyscreens included.
- Laundry overhead cabinetry.
- Shower Niches.



Call Boutique Homes 9008 7470

Or email enquiries@boutiquehomes.com.au

boutiquehomes.com.au

boutique
homes

Image used is an artist impression for illustrative purposes only and may show decorative items not included in the price. Further terms and conditions apply to this offer including with respect to the price, for the full terms and conditions please visit <http://www.boutiquehomes.com.au/disclaimer>.