

Grange *refined allure*

The Grange home design is perfect for a growing family, with ample space that will suit everybody's needs.

Grange 55



Specifications

Fits lot width	15.24m	Home width	14.10m	Total areas	513.28m ²
Fits lot depth	37m	Home length	24.10m		55.14sq

Facade options available

Premium

- Modern
- Como
- Soho

Designer

- Newtown
- Regent
- Cove
- Mode
- Vista

Architectural

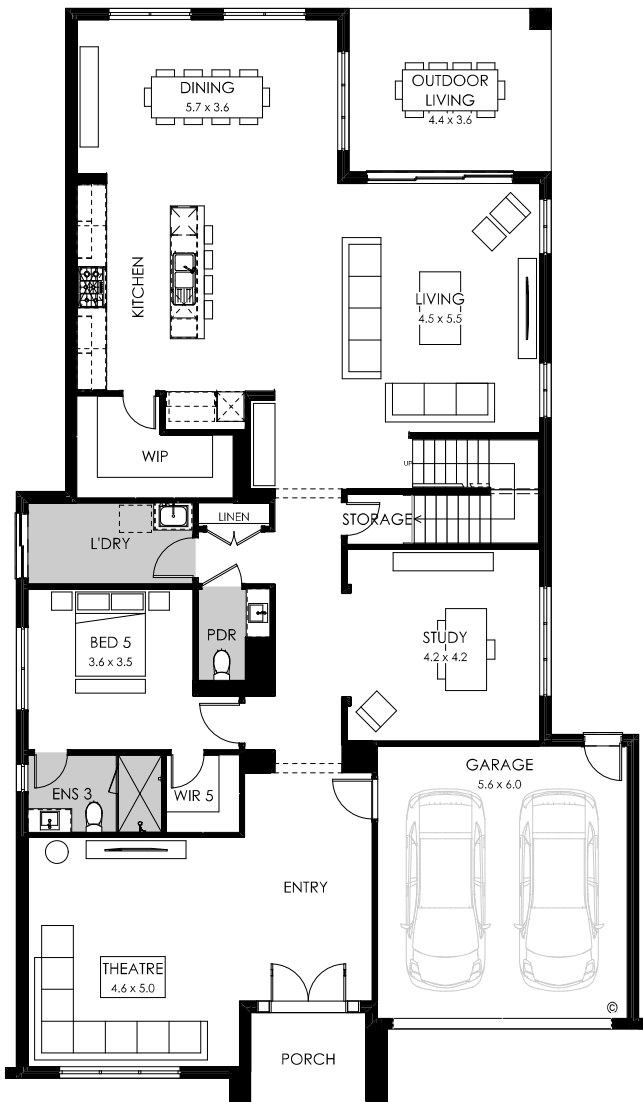
- Manor
- Wright
- Hamptons
- Greyson
- Greyson Dusk
- Byron
- Bayview
- Highland
- Arc
- Neo
- French Provincial
- Rhode Island

Design options available

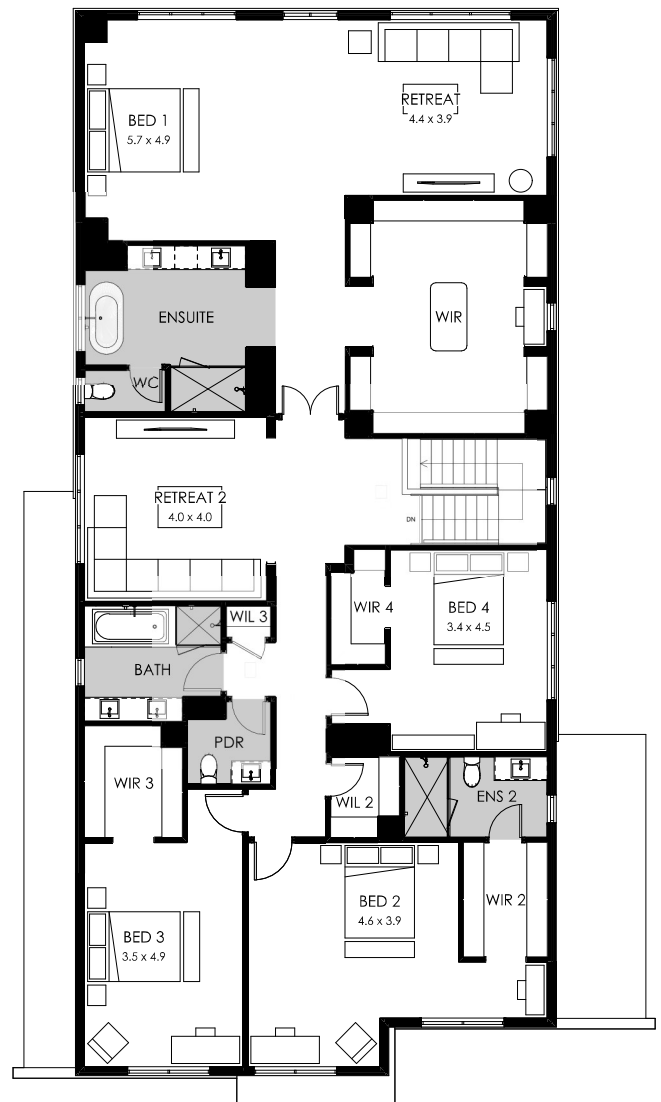
- Additional ensuite
- Alternate ensuite
- Alternate kitchen
- Alternate retreat
- Alternate study
- Butler's pantry (included)
- Ensuite to all minor bedrooms
- Full width outdoor living
- Grand outdoor living
- Rear balcony
- Rear flip
- Shower to powder
- Workshop

On display at

- 439 Springvale Road, Forest Hill



GROUND FLOOR



FIRST FLOOR

Grange 52



Specifications

Fits lot width	15.24m	Home width	14.23m	Total areas	478.58 m ²
Fits lot depth	30m	Home length	23.03m		51.51sq

Facade options available

Premium

- Modern
- Como
- Soho

Designer

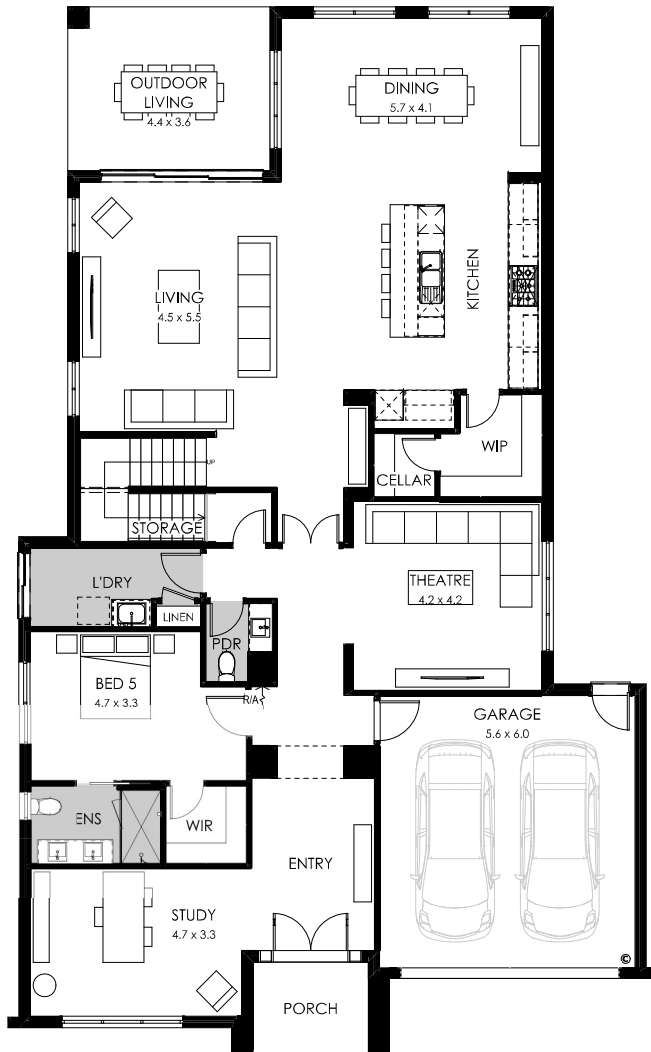
- Newtown
- Regent
- Cove
- Mode
- Vista

Architectural

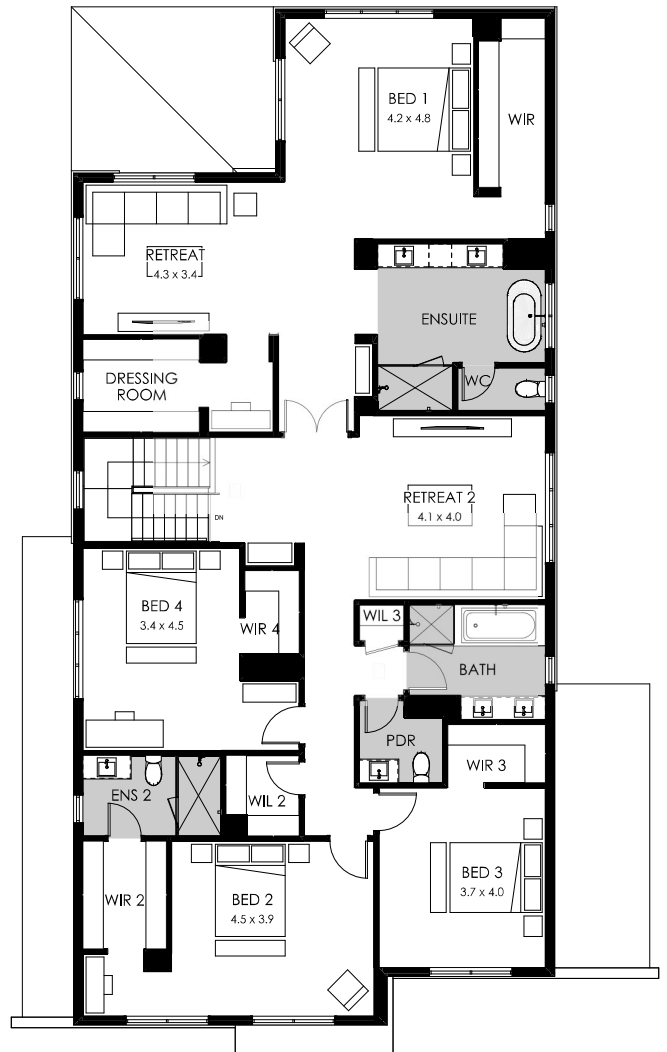
- Manor
- Wright
- Hamptons
- Greyson
- Greyson Dusk
- Byron
- Bayview
- Highland
- Arc
- Neo
- French Provincial
- Rhode Island

Design options available

- Alternate bed 1
- Alternate ensuite
- Alternate kitchen
- Alternate retreat
- Alternate study
- Alternate WIR
- Butler's pantry (included)
- Ensuite to all bedrooms
- Full width outdoor living
- Front living with garage storage
- Grand outdoor living
- Rear flip
- Rear balcony



GROUND FLOOR



FIRST FLOOR

Grange 45



Specifications

Fits lot width	14m	Home width	12.79m	Total areas	416.21m ²
Fits lot depth	30m	Home length	23.39m		44.80sq

Facade options available

Premium

- Modern
- Como
- Soho

Designer

- Newtown
- Regent
- Cove
- Mode
- Vista

Architectural

- Manor
- Wright
- Hamptons
- Greyson
- Greyson Dusk
- Byron

- Bayview
- Highland
- Arc
- Neo
- French Provincial

Design options available

- 5th bedroom
- Additional ensuite
- Alternate bed 1
- Alternate ensuite

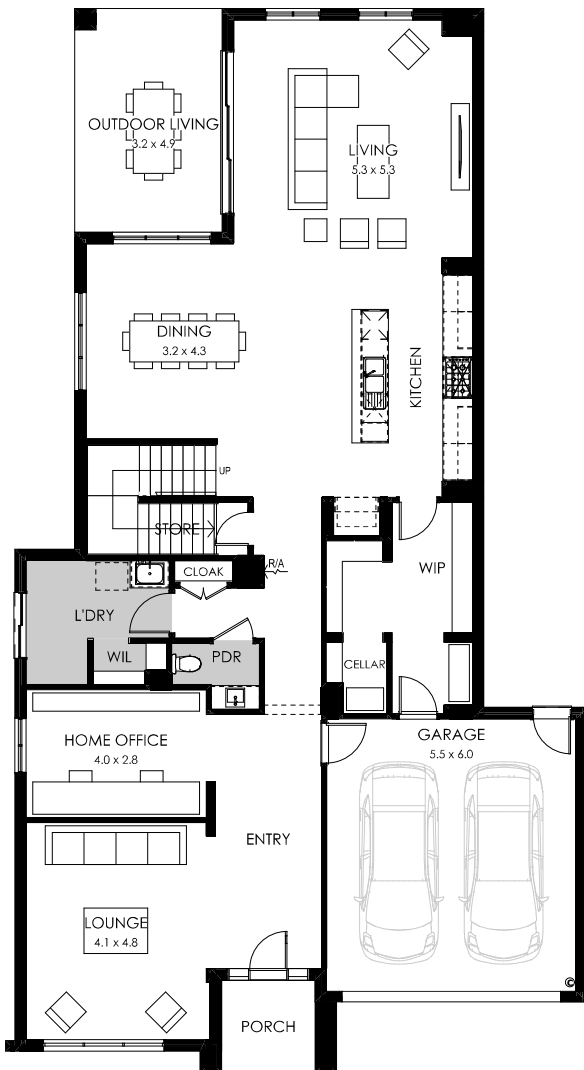
- Butler's pantry (included)
- Guest bedroom
- Grand laundry

- Guest wing
- Mudroom
- Rear balcony
- Rear flip

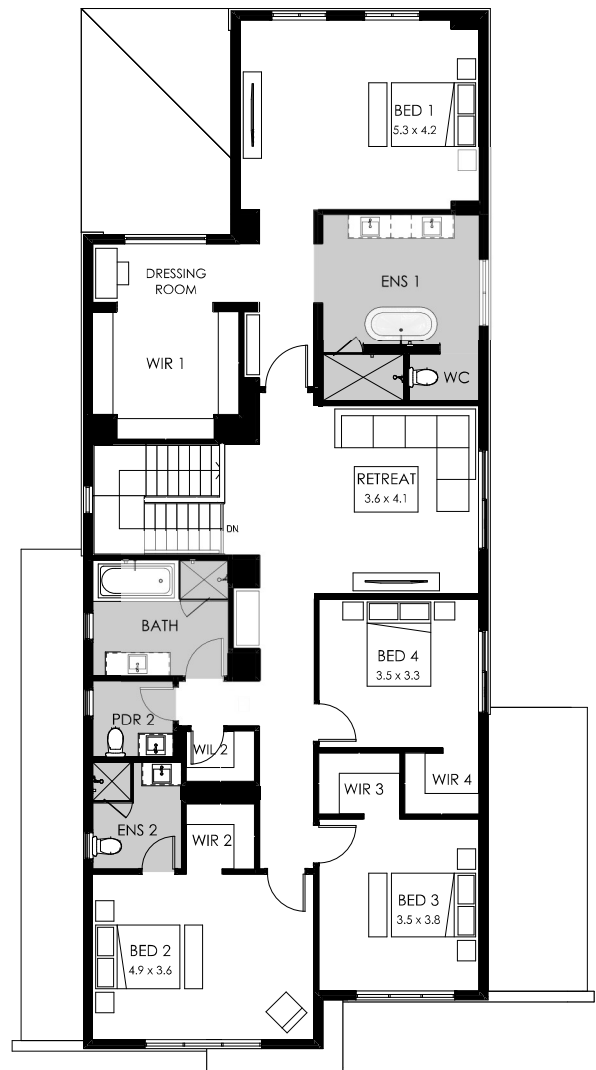
- Shower to powder
- Workshop

On display at

- Gen Fyansford Estate, Fyansford



GROUND FLOOR



FIRST FLOOR

Grange 41



Specifications

Fits lot width	14m	Home width	12.79m	Total areas	379.08m ²
Fits lot depth	28m	Home length	21.35m		40.80sq

Facade options available

Premium

- Modern
- Como
- Soho

Designer

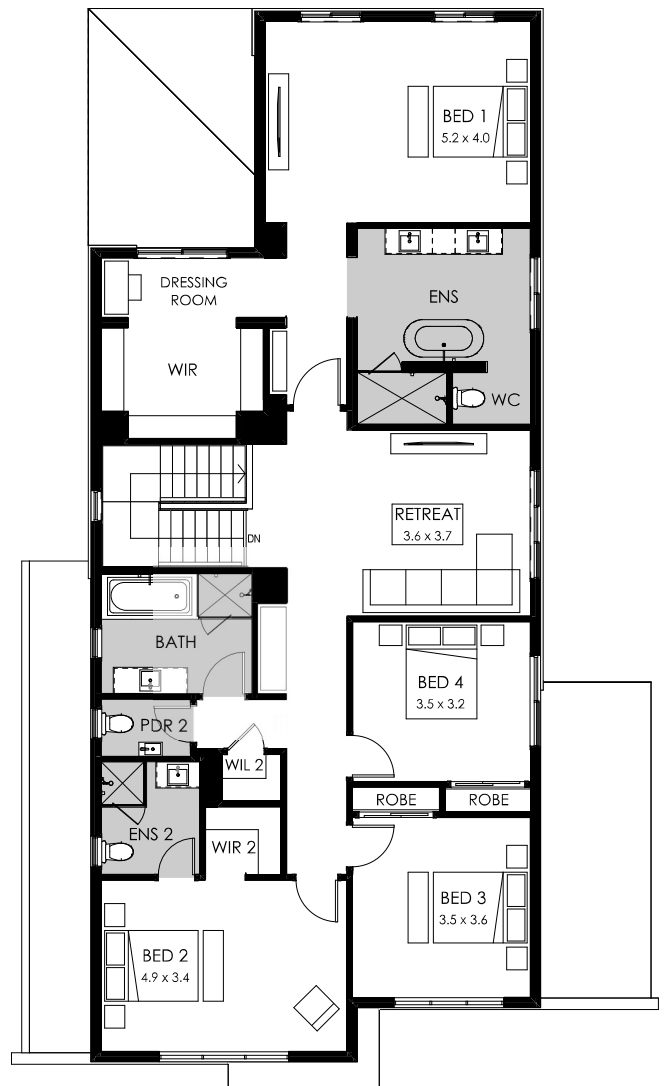
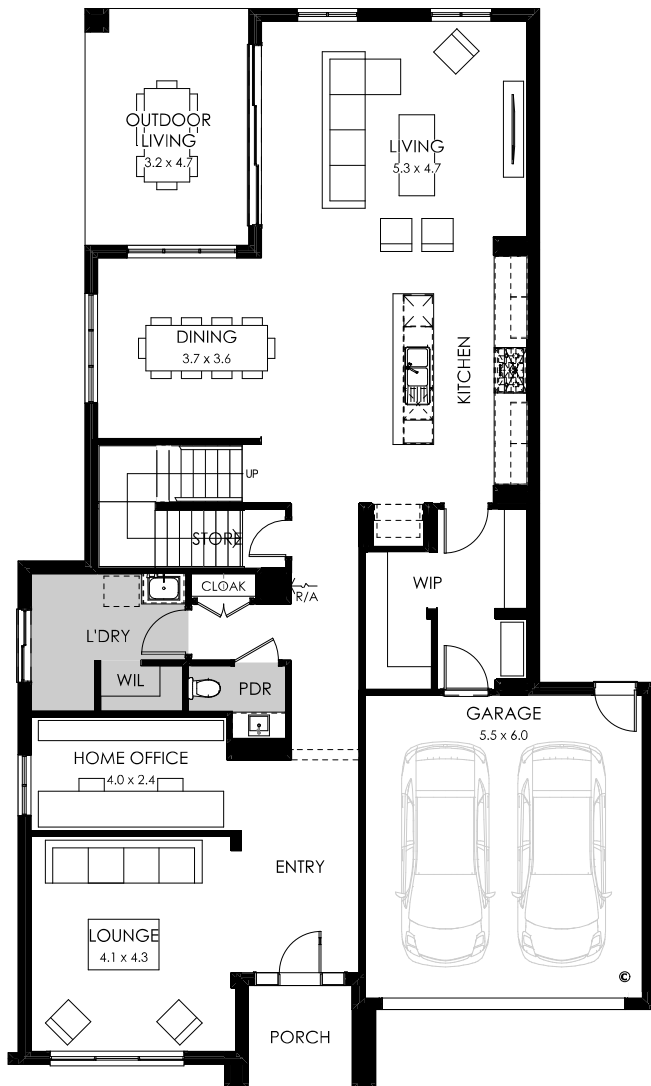
- Newtown
- Regent
- Cove
- Mode
- Vista

Architectural

- Manor
- Hamptons
- Greyson
- Greyson Dusk
- Wright
- Byron
- Highland
- Bayview
- Arc
- Neo
- French Provincial

Design options available

- 5th bedroom
- Additional ensuites
- Alternate bed 1
- Alternate ensuite
- Butler's pantry
- (included)
- Grand outdoor living
- Guest bedroom
- Larger living
- Rear balcony
- Rear flip
- Shower to powder
- Workshop



Grange 36



Specifications

Fits lot width	14m	Home width	12.83m	Total areas	329.75m ²
Fits lot depth	25m	Home length	17.83m		35.5sq

Facade options available

Premium

- Modern
- Como
- Soho

Designer

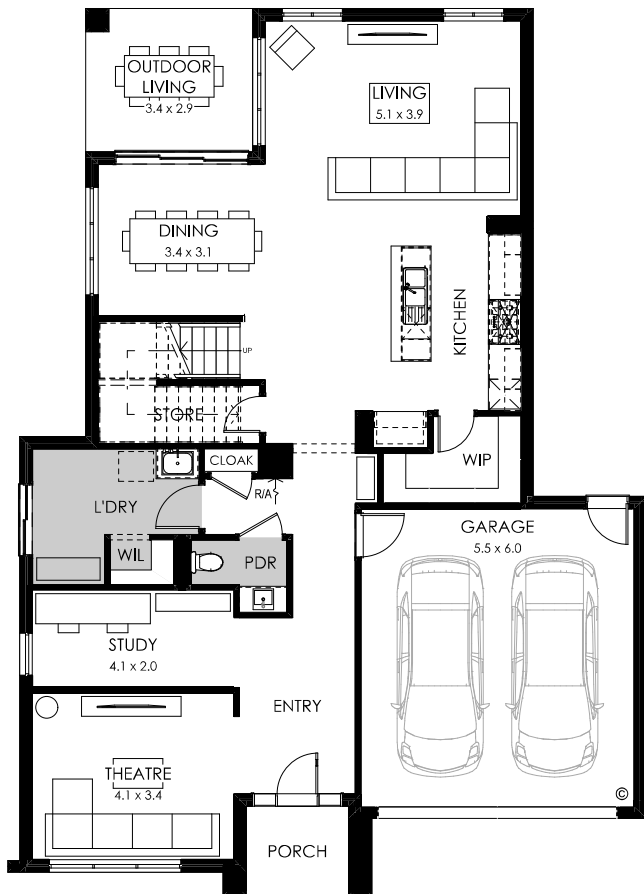
- Newtown
- Regent
- Cove
- Mode
- Vista

Architectural

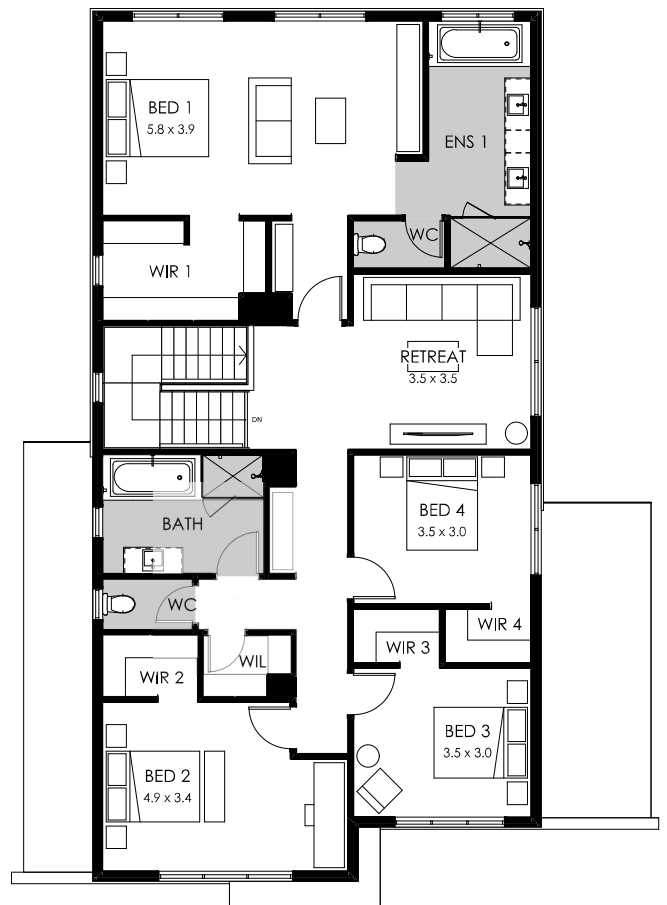
- Manor
- Hamptons
- Greyson
- Greyson Dusk
- Wright
- Byron
- Highland
- Bayview
- Arc
- Neo
- French Provincial

Design options available

- Additional ensuite
- Alternate kitchen
- Bathroom upgrade
- Butler's pantry (included)
- Grand outdoor living
- Guest bedroom
- Powder room
- Rear flip
- Shower to powder



GROUND FLOOR



FIRST FLOOR