

# Portofino *uniquely cosy*

The Portofino home design offers a unique point of difference, with the inclusion of a side courtyard, creating an instant indoor-outdoor experience and style of living in a family home.



# Portofino 31



## Specifications

Fits lot width	16m	Home width	14.03m	Total areas	284.24m <sup>2</sup>
Fits lot depth	32m	Home length	24.71m		30.60sq

## Facade options available

### Premium

- Modern
- Metro
- Viva

### Designer

- Vogue
- Contempo
- Cape
- Luxe
- Tribeca
- Tribeca Brick

### Architectural

- Gallerie
- Provincial
- Southampton
- Mason
- Arcadia
- Alpine

- Arlo
- Flinders
- Bellarine

## Design options available

- Additional ensuite
- Alternate bed 1
- Alternate kitchen
- Bathroom upgrade
- Butler's pantry (included)

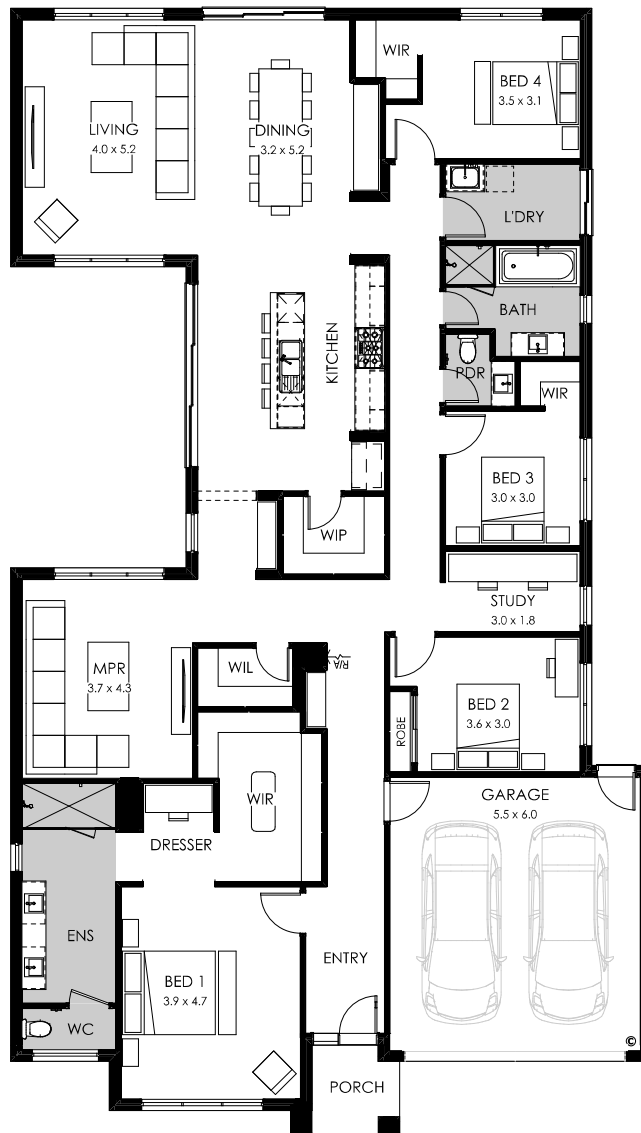
- E-zone
- Grand outdoor living
- Larger living
- Larger MPR
- Outdoor living
- Powder room

- Raked ceiling 10.5 deg
- Raked ceiling 10.5 deg to bed 1
- Raked ceiling 10.5 deg to MPR

- Raked ceiling 10.5 deg to larger MPR
- Raked ceiling 10.5 deg to larger living
- Rear flip
- Workshop

## On display at

- Woodlea Estate, Aintree
- Armstrong Estate, Mount Duneed



# Portofino 28



## Specifications

Fits lot width	14m	Home width	12.71m	Total areas	261.01m <sup>2</sup>
Fits lot depth	32m	Home length	24.71m		28.10sq

## Facade options available

### Premium

- Modern
- Metro
- Viva

### Designer

- Vogue
- Contempo
- Cape
- Luxe
- Tribeca
- Tribeca Brick

### Architectural

- Gallerie
- Provincial
- Southampton
- Mason
- Alpine
- Arlo

- Flinders
- Bellarine

## Design options available

- Alternate bed 1
- Additional ensuite
- Bathroom upgrade
- Bath to ensuite
- Butler's pantry (included)
- Outdoor living
- Powder room
- Raked ceiling 10.5 deg
- Rear flip
- Workshop

