

Montana *rural beauty*

The Montana brings rural beauty and functionality to any location, creating the perfect country feel.



Montana 42

 4
  2
  2

Specifications

Fits lot width	32m	Home width	28.31m	Total areas	390.29m ²
Fits lot depth	30m	Home length	20.32m		42.01sq

Facade options available

Premium

- Modern

Designer

- Cape

Architectural

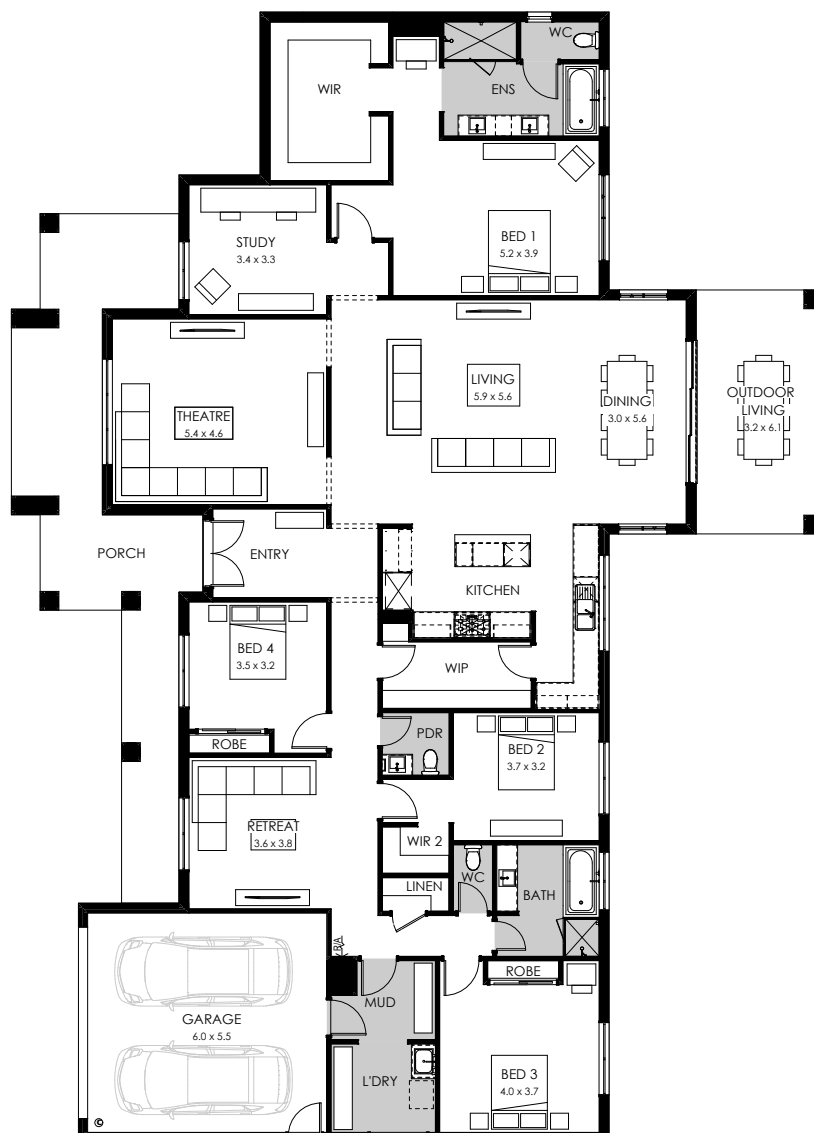
- Provincial
- Southampton
- Heathcote

Design options available

- 5th bedroom
- Additional ensuite
- Alternate laundry
- Alternate grand outdoor living
- Bathroom upgrade
- Butler's pantry
- Fireplace to living
- Grand outdoor living
- Raked ceiling 10.5 deg
- Raked ceiling 10.5 deg outdoor living
- Raked ceiling 10.5 deg theatre
- Shower to laundry
- Triple garage
- Veranda

On display at

- Redstone





Fits lot width	32m	Home width	28.31m	Total areas	353.41m ²
Fits lot depth	25m	Home length	18.16m		38.04sq

- Provincial
- Southampton
- Heathcote

- Raked ceiling 10.5 deg to living, dining and outdoor living
- Shower to laundry
- Triple garage

