

Montreal *expansive living*

The Montreal home design is perfect for larger families or multi-generational living.

Montreal 43

 4
  3
  2

Specifications

Fits lot width	15.24m	Home width	13.79m	Total areas	403.96m ²
Fits lot depth	32m	Home length	22.88m		43.47sq

Facade options available

Premium

- Modern
- Como
- Soho

Designer

- Newtown
- Regent
- Cove
- Mode
- Vista

Architectural

- Manor
- Hamptons
- Greyson Dusk
- Wright
- Byron
- Greyson

- Highland
- Bayview
- Arc
- Neo

Design options available

- 5th bedroom
- Alternate butler's pantry
- Alternate grand outdoor living

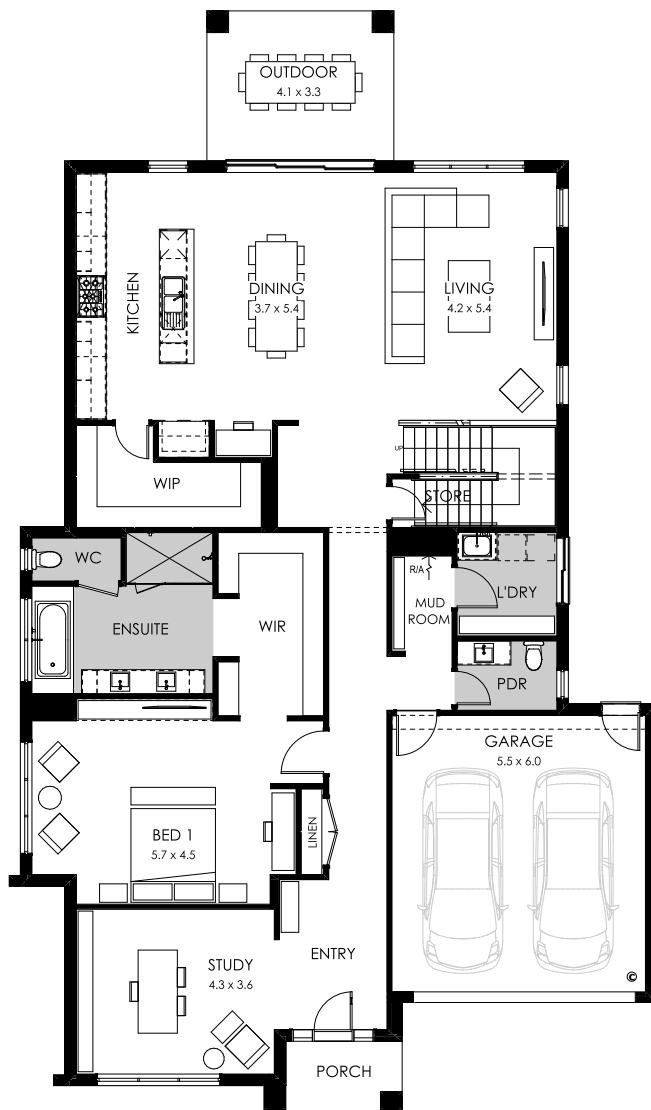
- Alternate kitchen
- Alternate kitchen L-shape
- Bar
- Bathroom upgrade

- Butler's pantry
- Grand laundry
- Grand outdoor living
- Guest bedroom
- Larger Kitchen

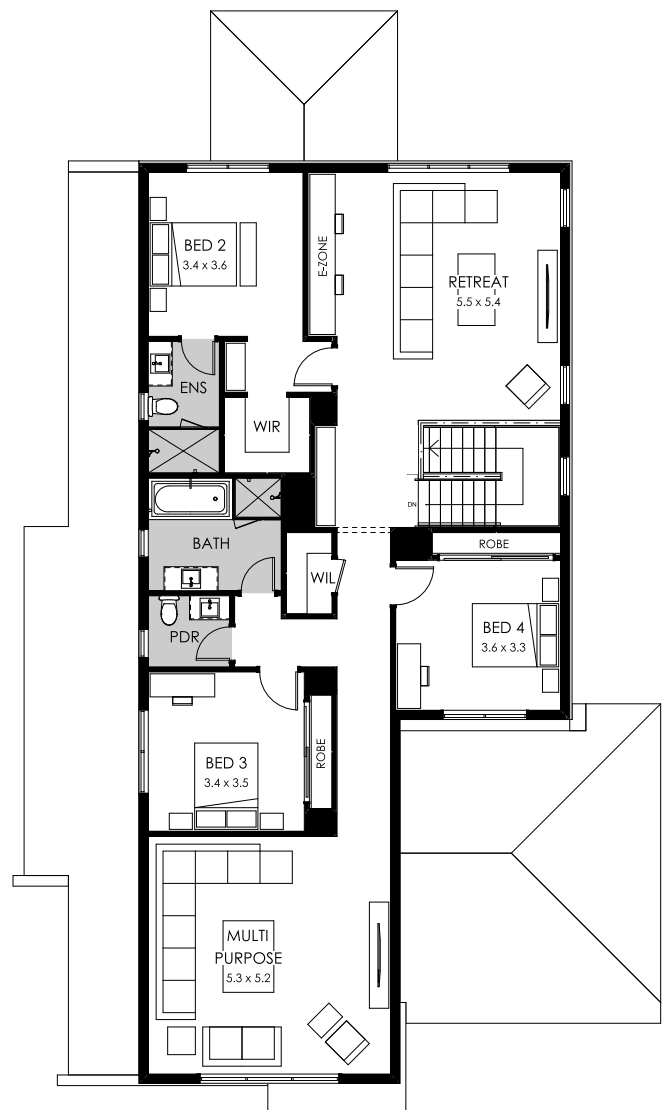
- Larger kitchen & dining
- Rear balcony
- Shower to powder
- Void
- Workshop

On display at

- Bankside



GROUND FLOOR



FIRST FLOOR

Montreal 43B

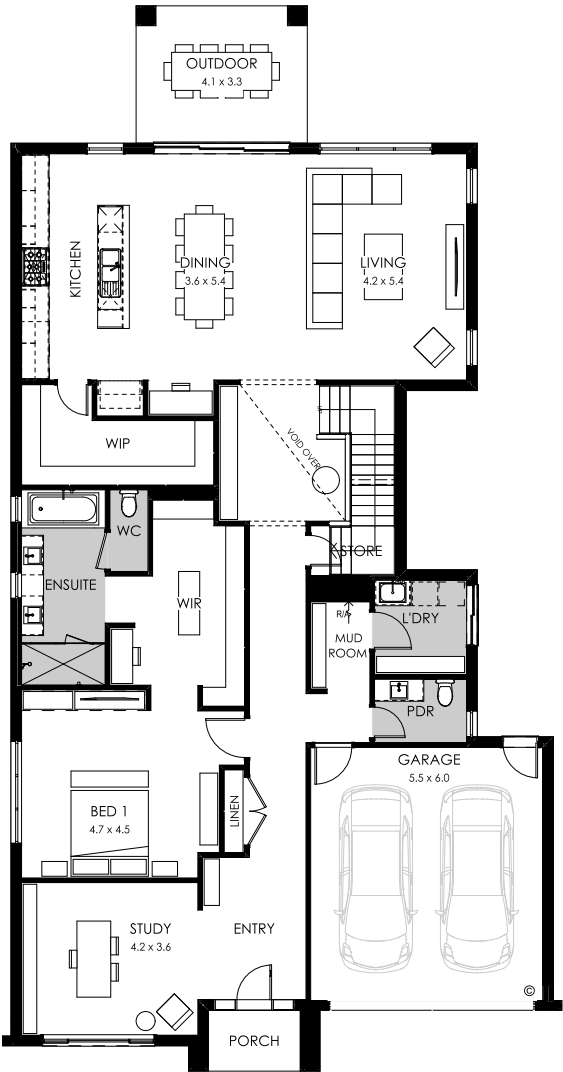
4
 3
 2

Specifications	Fits lot width	15.24m	Home width	13.23m	Total areas	402.65m ²
	Fits lot depth	32m	Home length	25.20m		43.34sq

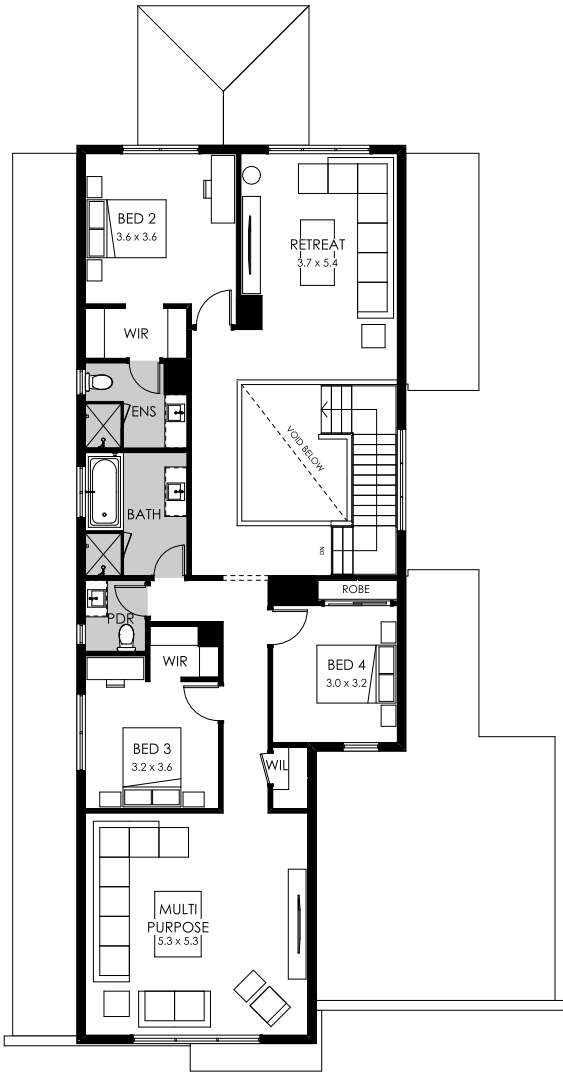
Facade options available	Premium	Designer	Architectural	
	<ul style="list-style-type: none"> Modern Como Soho 	<ul style="list-style-type: none"> Newtown Regent Cove Mode Vista 	<ul style="list-style-type: none"> Manor Hamptons Greyson Dusk Wright Byron Greyson 	

Design options available	<ul style="list-style-type: none"> 5th bedroom Alternate grand outdoor living Alternate kitchen 	<ul style="list-style-type: none"> Alternate kitchen L-shape Bar Bathroom upgrade 	<ul style="list-style-type: none"> Butler's pantry Grand laundry Grand outdoor living Guest bedroom 	<ul style="list-style-type: none"> Larger kitchen & dining Rear balcony Shower to powder Workshop
--------------------------	--	--	---	---

This home design is Bayside compliant



GROUND FLOOR



FIRST FLOOR

Montreal 40

 4
  3
  2

Specifications

Fits lot width	14m	Home width	12.71m	Total areas	371.38m ²
Fits lot depth	28m	Home length	20.63m		39.98sq

Facade options available

Premium

- Modern
- Como
- Soho

Designer

- Newtown
- Regent
- Cove
- Mode
- Vista

Architectural

- Manor
- Hamptons
- Greyson Dusk
- Wright
- Byron
- Greyson

- Highland
- Bayview
- Arc
- Neo

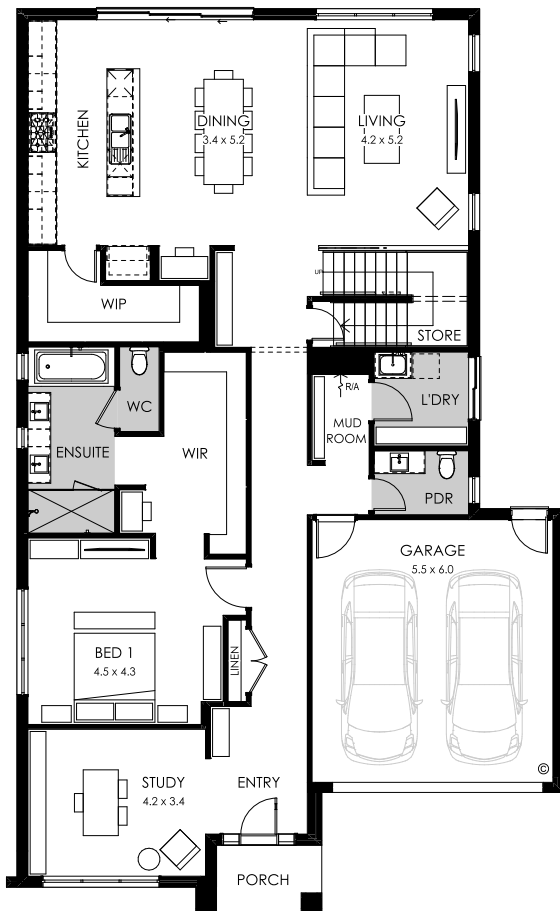
Design options available

- 5th bedroom
- Alternate butler's pantry
- Alternate grand outdoor living
- Alternate kitchen L-shape
- Bar
- Bathroom upgrade
- Butler's pantry
- Grand laundry
- Grand outdoor living
- Guest bedroom

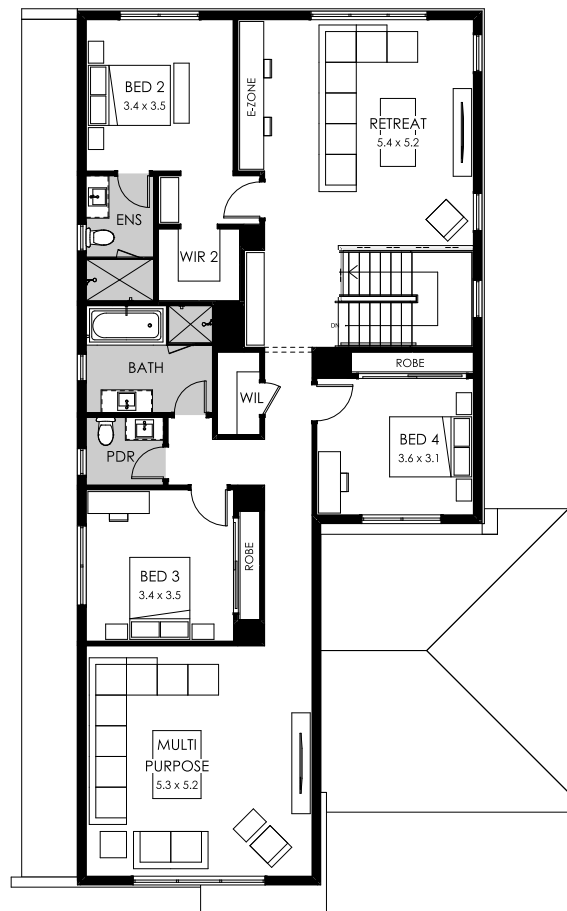
- Larger kitchen & dining
- Outdoor living
- Rear balcony
- Shower to powder
- Void

On display at

- Banksia



GROUND FLOOR



FIRST FLOOR

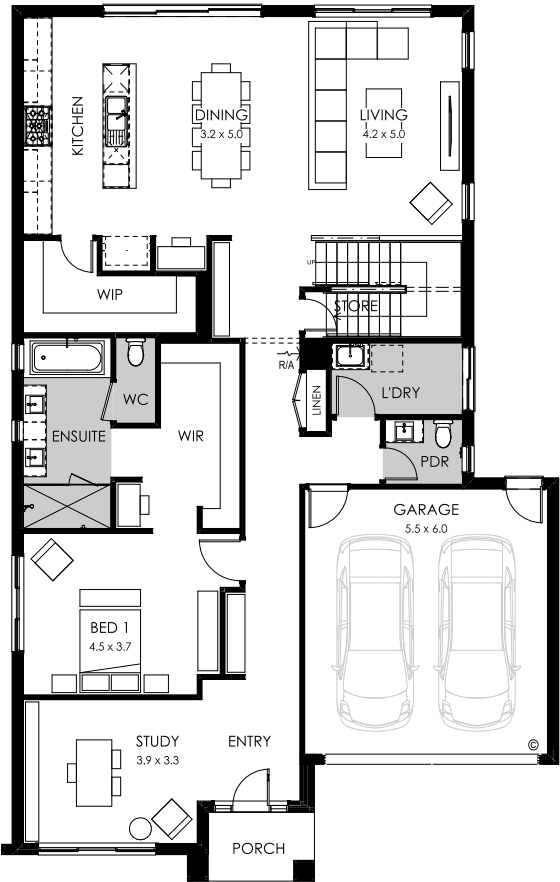
Montreal 37

4 2 2

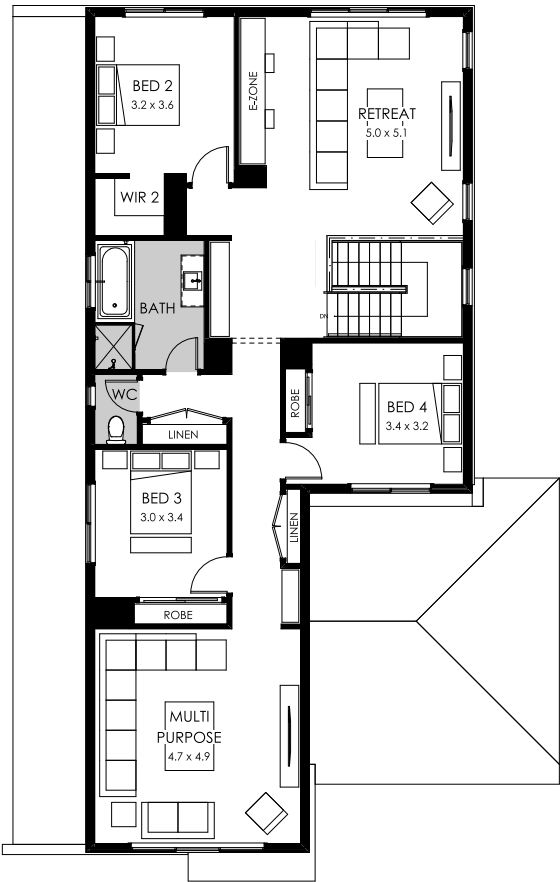
Specifications	Fits lot width	14m	Home width	12.59m	Total areas	343.78m ²
	Fits lot depth	28m	Home length	19.79m		37.00sq

Facade options available	Premium	Designer	Architectural	
	<ul style="list-style-type: none">ModernComoSoho	<ul style="list-style-type: none">NewtownRegentCoveModeVista	<ul style="list-style-type: none">ManorHamptonsGreyson DuskWrightByronGreyson	<ul style="list-style-type: none">HighlandBayviewArcNeo

Design options available	<ul style="list-style-type: none">5th bedroomAlternate butler's pantryAlternate grand outdoor livingAlternate kitchen	<ul style="list-style-type: none">Alternate kitchen L-shapeBarBathroom upgradeButler's pantry	<ul style="list-style-type: none">Grand outdoor livingGuest bedroomOutdoor livingPowder roomRear balcony	<ul style="list-style-type: none">Shower to powderVoidLarger kitchen and dining
--------------------------	--	--	--	---



GROUND FLOOR



FIRST FLOOR