

Riviera

warm & welcoming

The Riviera offers every member of the family a place to relax, unwind and enjoy.



Riviera 32

 4
  2
  2

Specifications

Fits lot width	16m	Home width	14.27m	Total areas	298.56m ²
Fits lot depth	32m	Home length	24.35m		32.13sq

Facade options available

Premium

- Modern
- Metro
- Viva

Designer

- Vogue
- Contempo
- Luxe
- Cape
- Tribeca

Architectural

- Gallerie
- Provincial
- Southampton
- Mason
- Arcadia

- Coast
- Alpine
- Flinders
- Arlo

Design options available

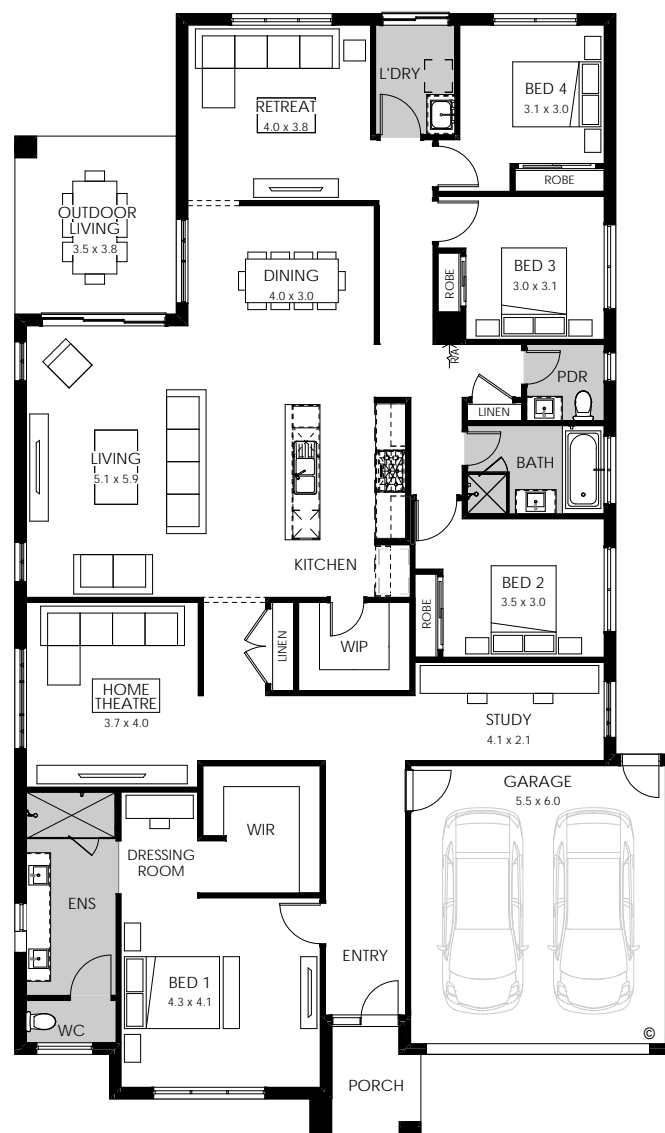
- 5th bedroom
- Additional ensuite
- Alternate kitchen
- Alternate laundry
- Alternate theatre
- Alternate study

- Alternate WIR
- Butler's pantry
- Bathroom upgrade
- Grand outdoor living
- Guest wing
- Larger living

- Raked ceiling 17 deg to bed 1 (facade specific)
- Raked ceiling to larger living
- Rear flip
- Workshop

On display at

- Cloverton
- Coridale
- Ferntree Ridge



Riviera 29

 4  2  2

Specifications	Fits lot width	14m	Home width	12.71m	Total areas	266.60m ²
	Fits lot depth	32m	Home length	25.67m		28.69sq

Facade options available	Premium	Designer	Architectural	
	<ul style="list-style-type: none">• Modern• Metro• Viva	<ul style="list-style-type: none">• Vogue• Contempo• Cape• Luxe• Tribeca	<ul style="list-style-type: none">• Gallerie• Provincial• Southampton• Mason• Alpine	<ul style="list-style-type: none">• Arlo• Coast• Flinders

Design options available	<ul style="list-style-type: none">• 5th bedroom• Alternate theatre• Bath to ensuite	<ul style="list-style-type: none">• Butler's pantry• Grand laundry• Guest bedroom	<ul style="list-style-type: none">• Powder room• Rear flip• Workshop
--------------------------	---	---	--

