

L-shaped
designs

boutique
homes



Discover a range of staircase styles to complement your style. We've partnered with Australia's leading staircase specialists to offer a selection that effortlessly blends form and function.

4 L-shaped winders at top	5 Standard staircase 6 Balustrade upgrade options 7 Santorini 8 Santiago 9 Oslo 10 Hampton	11 Berlin 12 Long Island 13 Provence 14 Kyoto 15 Byron 16 Bordeaux 17 Rhode Island	18 Premium designs 19 Minimalist 20 Abstract 21 Contemporary 22 Industrial 23 Nouveau
----------------------------------	---	--	---

24 L-shaped winders at bottom	25 Standard staircase 26 Balustrade upgrade options 27 Santorini 28 Santiago 29 Oslo 30 Hampton 31 Berlin	32 Long Island 33 Provence 34 Kyoto 35 Byron 36 Bordeaux 37 Rhode Island	38 Premium designs 39 Minimalist 40 Modernist 41 Abstract 42 Contemporary 43 Industrial 44 Nouveau
--------------------------------------	---	---	---

46 L-shaped landing at bottom	47 Standard staircase 48 Balustrade upgrade options 49 Santorini 50 Santiago 51 Oslo 52 Hampton 53 Berlin	54 Long Island 55 Provence 56 Kyoto 57 Byron 58 Bordeaux 59 Rhode Island	60 Premium designs 61 Minimalist 62 Modernist 63 Abstract 64 Contemporary 65 Industrial 66 Nouveau
--------------------------------------	---	---	---

68 L-shaped landing to bottom & void	69 Standard staircase 70 Balustrade upgrade options 71 Santiago 72 Oslo 73 Hampton 74 Berlin 75 Long Island	76 Provence 77 Byron 78 Bordeaux 79 Rhode Island	80 Premium designs 81 Minimalist 82 Modernist 83 Abstract 84 Contemporary 85 Industrial 86 Nouveau
---	---	---	---

88 Stair material options

89 Glossary

L-shaped
winders at top



All images are for illustration purposes and are to be used as a guide only. Dimensions and individual stair elements may change depending on chosen house type and stair options. Ascot 36 model shown. Upgraded lighting shown.

Standard staircase

Carpet to stairs and solid plaster wall to ground floor. Dwarf plaster wall with painted MDF capping to first floor return.



All images are for illustration purposes and are to be used as a guide only. Dimensions and individual stair elements may change depending on chosen house type and stair options. Ascot 36 model shown. Upgraded lighting shown.

Stair materials
Carpet (included material)

Upgrade options:
Kiln Dried Hardwood
Kiln Dried Hardwood with painted risers
Kiln Dried Hardwood with carpet runner

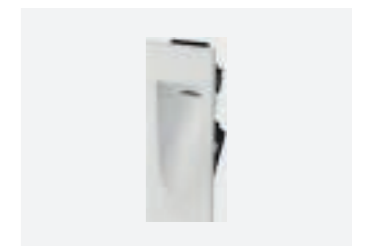
Wall rail
Square & painted



Wall rail bracket
Chrome (standard)

Upgrade options:
Black
White

Standard lighting inclusion
Lumi Lychee aluminium LED step light's (choice of white or black)



Balustrade upgrade options



Santorini Page 9



Santiago Page 10



Oslo Page 11



Hampton Page 12



Berlin Page 13



Long Island Page 14



Provence Page 15



Kyoto Page 16



Byron Page 17



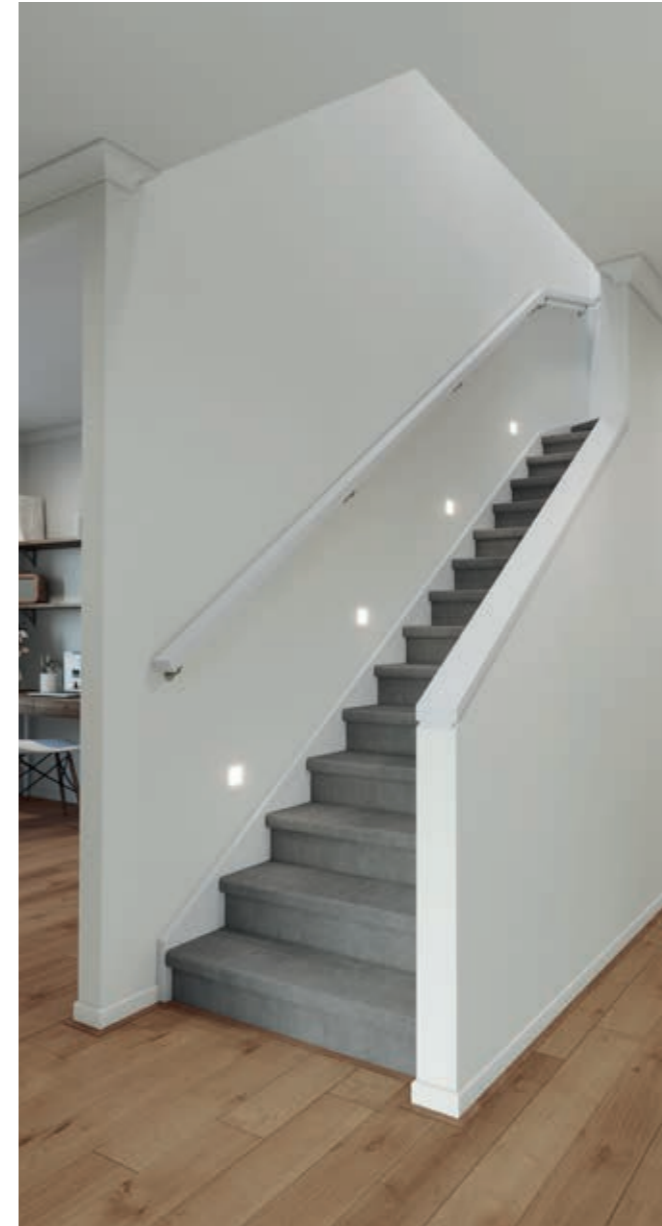
Bordeaux Page 18



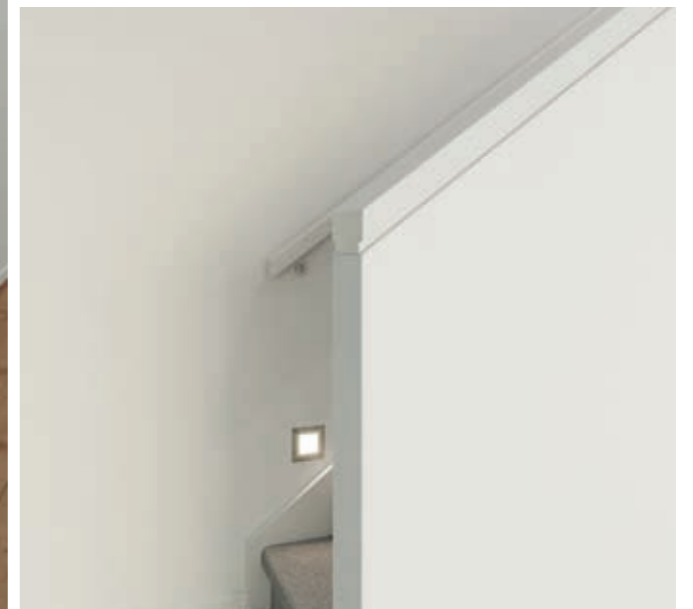
Rhode Island Page 19

Santorini

Dwarf plaster wall with painted MDF capping.



Wall rail to full flight required



Balustrade location

Dwarf plaster wall with MDF capping to full staircase including ground floor & first floor.

Stair materials

Carpet (included material)

Upgrade options:

- Kiln Dried Hardwood
- Kiln Dried Hardwood with painted risers
- Kiln Dried Hardwood with carpet runner

Wall rail

Square & painted



Wall rail bracket

Chrome (standard)

Upgrade options:

- Black
- White

Santiago

Black steel rods with painted timber posts and handrail.

Balustrade location Option 1



Balustrade location Option 2



Balustrade location Option 1

Feature balustrade to ground floor only, dwarf plaster wall with MDF capping to first floor return.

Balustrade location Option 2

Feature balustrade to full staircase including ground floor & first floor return.

Stair materials

Carpet (included material)

Upgrade options:

- Kiln Dried Hardwood
- Kiln Dried Hardwood with painted risers
- Kiln Dried Hardwood with carpet runner

Handrail & wall rail

Round & painted



Wall rail bracket

Chrome (standard)

Upgrade options:

- Black
- White

Oslo

Dwarf plaster wall with Kiln Dried Hardwood drop down capping.



Balustrade location

Feature balustrade to full staircase including ground floor & first floor.

Stair materials

Carpet (included material)

Upgrade options:

- Kiln Dried Hardwood
- Kiln Dried Hardwood with painted risers
- Kiln Dried Hardwood with carpet runner

Wall rail

Square & stained



Wall rail bracket

Chrome (standard)

Upgrade options:

- Black
- White

Hampton

42mm square painted timber balusters and 90mm timber posts with flat caps.

Balustrade location Option 1



Balustrade location Option 2



Balustrade location Option 1

Feature balustrade to ground floor only, dwarf plaster wall with MDF capping to first floor return.

Balustrade location Option 2

Feature balustrade to full staircase including ground floor & first floor return.

Stair materials

Carpet (included material)

Upgrade options:

- Kiln Dried Hardwood
- Kiln Dried Hardwood with painted risers
- Kiln Dried Hardwood with carpet runner

Handrail & wall rail

Square & painted



Wall rail bracket

Chrome (standard)

Upgrade options:

- Black
- White

All images are for illustration purposes and are to be used as a guide only. Dimensions and individual stair elements may change depending on chosen house type and stair options. Ascot 36 model shown. Upgraded lighting shown.

Berlin

Black steel blades with black steel square posts and timber handrail.

Balustrade location Option 1



Balustrade location Option 2



Balustrade location Option 1

Feature balustrade to ground floor only, dwarf plaster wall with MDF capping to first floor.

Balustrade location Option 2

Feature balustrade to full staircase including ground floor & first floor.

Stair materials

Kiln Dried Hardwood (included material)*

Upgrade option:

Kiln Dried Hardwood with carpet runner

*Note: carpet is not available with this balustrade option.

Handrail & wall rail

Square & stained



Wall rail bracket

Chrome (standard)

Upgrade options:

- Black
- White

All images are for illustration purposes and are to be used as a guide only. Dimensions and individual stair elements may change depending on chosen house type and stair options. Ascot 36 model shown. Upgraded lighting shown.

Long Island

Painted timber balusters, timber posts with flat tops and square handrail.

Balustrade location Option 1



Balustrade location Option 2



Balustrade location Option 1

Feature balustrade to ground floor only, dwarf plaster wall with MDF capping to first floor return.

Balustrade location Option 2

Feature balustrade to full staircase including ground floor & first floor return.

Stair materials

Kiln Dried Hardwood with painted risers* (included material)

Upgrade options:

Kiln Dried Hardwood
Kiln Dried Hardwood with carpet runner

*Note: carpet is not available with this balustrade option.

Handrail & wall rail

Square & painted



Wall rail bracket

Chrome (standard)

Upgrade options:

Black
White

All images are for illustration purposes and are to be used as a guide only. Dimensions and individual stair elements may change depending on chosen house type and stair options. Ascot 36 model shown. Upgraded lighting shown.

Provence

Black steel twist rods with decorative timber posts and handrail.

Balustrade location Option 1



Balustrade location Option 2



Balustrade location Option 1

Feature balustrade to ground floor only, dwarf plaster wall with MDF capping to first floor.

Balustrade location Option 2

Feature balustrade to full staircase including ground floor & first floor.

Stair materials

Kiln Dried Hardwood (included material)*

Upgrade option:

Kiln Dried Hardwood with carpet runner

*Note: carpet is not available with this balustrade option.

Handrail & wall rail

Bullnose & stained



Wall rail bracket

Chrome (standard)

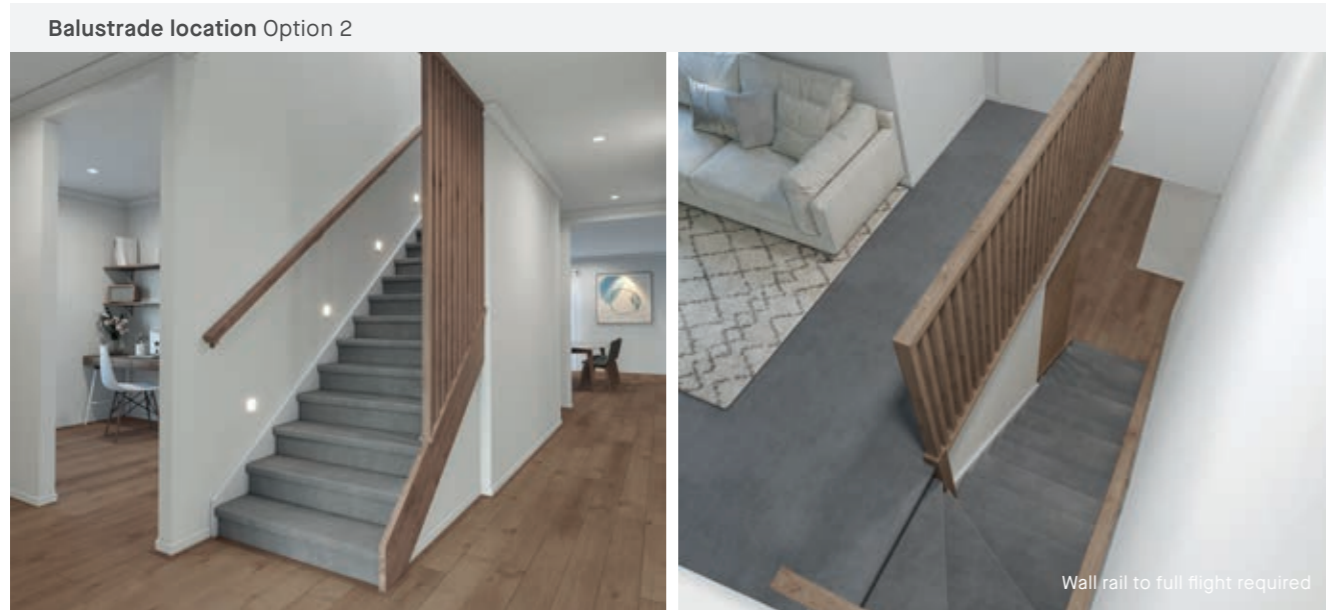
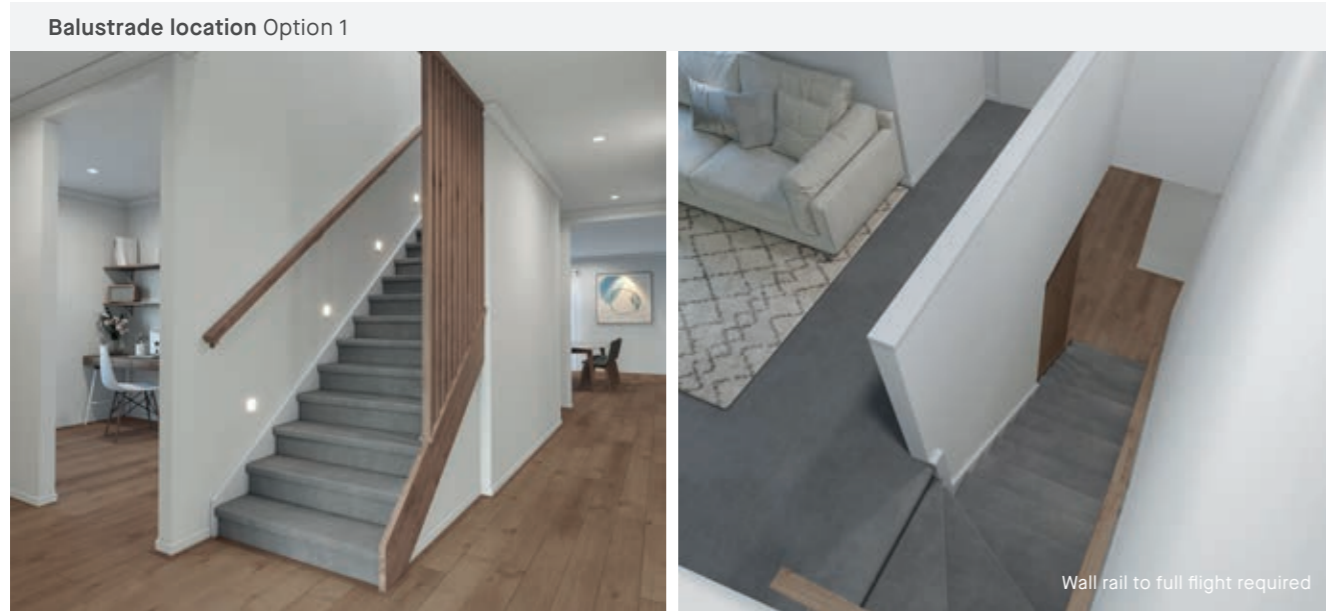
Upgrade options:

Black
White

All images are for illustration purposes and are to be used as a guide only. Dimensions and individual stair elements may change depending on chosen house type and stair options. Ascot 36 model shown. Upgraded lighting shown.

Kyoto

42mm timber batten feature screen to ground floor and standard height timber balustrade.



Balustrade location Option 1

Feature balustrade to ground floor only, dwarf plaster wall with MDF capping to first floor return.

Balustrade location Option 2

Feature balustrade to full staircase including ground floor & first floor return.

Stair materials

Carpet (included material)

Upgrade options:

Kiln Dried Hardwood
Kiln Dried Hardwood with carpet runner

Handrail & wall rail

Square & stained



Wall rail bracket

Chrome (standard)

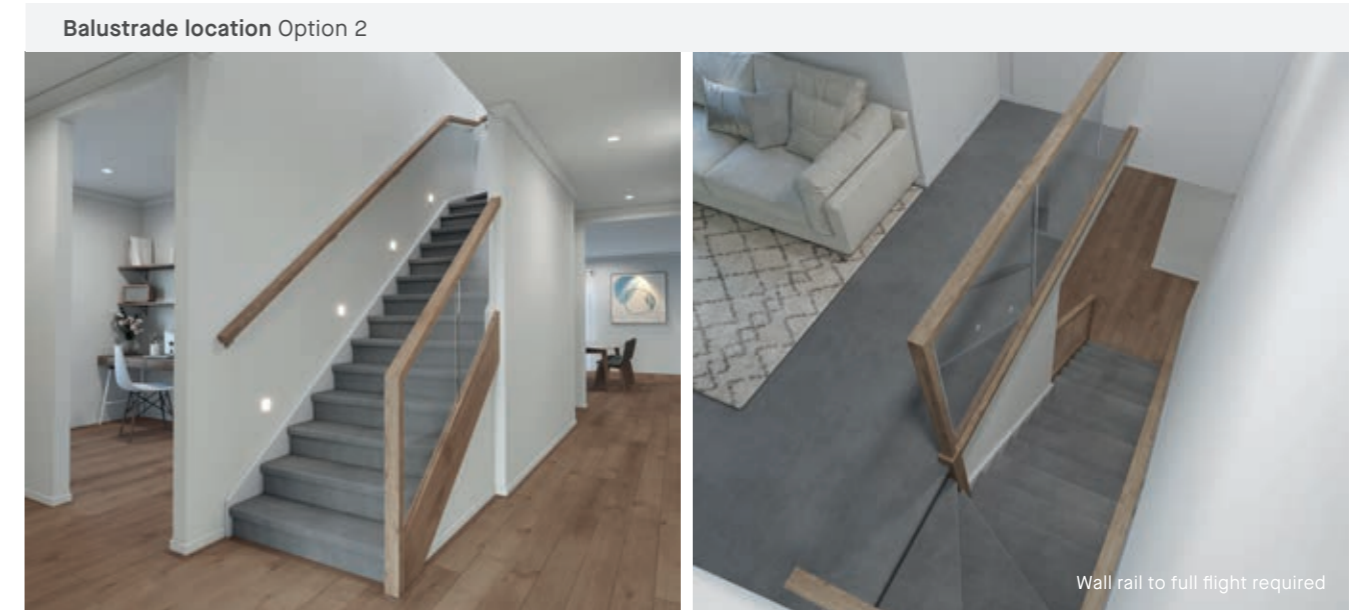
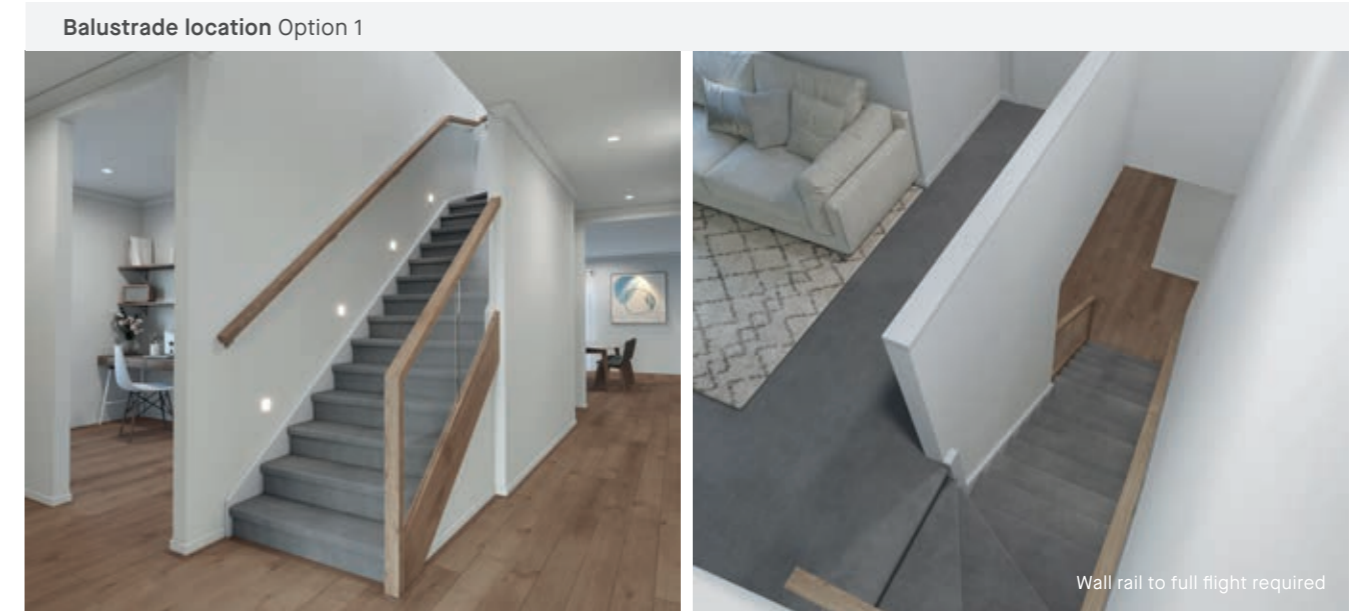
Upgrade options:

Black
White

All images are for illustration purposes and are to be used as a guide only. Dimensions and individual stair elements may change depending on chosen house type and stair options. Ascot 36 model shown. Upgraded lighting shown.

Byron

Rebated glass panels with square timber framed handrail and posts.



Balustrade location Option 1

Feature balustrade to ground floor only, dwarf plaster wall with MDF capping to first floor.

Balustrade location Option 2

Feature balustrade to full staircase including ground floor & first floor.

Stair materials

Carpet (included material)

Upgrade options:

Kiln Dried Hardwood
Kiln Dried Hardwood with painted risers
Kiln Dried Hardwood with carpet runner

Handrail & wall rail

Square & stained



Wall rail bracket

Chrome (standard)

Upgrade options:

Black
White

All images are for illustration purposes and are to be used as a guide only. Dimensions and individual stair elements may change depending on chosen house type and stair options. Ascot 36 model shown. Upgraded lighting shown.

Bordeaux

Black oval steel balustrade with timber decorative posts and stained timber handrail.

Balustrade location Option 1



Wall rail to full flight required

Balustrade location Option 2



Wall rail to full flight required

Balustrade location Option 1

Feature balustrade to ground floor only, dwarf plaster wall with MDF capping to first floor return.

Balustrade location Option 2

Feature balustrade to full staircase including ground floor & first floor return.

Stair materials

Kiln Dried Hardwood (included material)*

Upgrade option:

Kiln Dried Hardwood with carpet runner

*Note: carpet is not available with this balustrade option.
Alternating pattern of balustrade may vary due to number of stairs and house design/size. Double plain rods may be required near posts.

Handrail & wall rail

Bullnose & stained



Wall rail bracket

Black (standard)

All images are for illustration purposes and are to be used as a guide only. Dimensions and individual stair elements may change depending on chosen house type and stair options. Ascot 36 model shown. Upgraded lighting shown.

Rhode Island

Stained tapered timber balusters, square timber posts with round handrail.

Balustrade location Option 1



Wall rail to full flight required

Balustrade location Option 2



Wall rail to full flight required

Balustrade location Option 1

Feature balustrade to ground floor only, dwarf plaster wall with MDF capping to first floor.

Balustrade location Option 2

Feature balustrade to full staircase including ground floor & first floor.

Stair materials

Kiln Dried Hardwood with painted risers (included material)*

Upgrade option:

Kiln Dried Hardwood with carpet runner

*Note: carpet is not available with this balustrade option.

Handrail & wall rail

Round & stained



Wall rail bracket

Chrome (standard)

Upgrade options:

Black
White

All images are for illustration purposes and are to be used as a guide only. Dimensions and individual stair elements may change depending on chosen house type and stair options. Ascot 36 model shown. Upgraded lighting shown.

Premium *designs*



Minimalist

Minimalistic in its design and features, this design has a subtle interplay between modern and traditional design elements.



Wall rail

Square & stained



Wall rail bracket

Chrome (standard)

Upgrade options:

Black

White

Minimalist features 5mm nosing with concealed stringers and a plaster dwarf wall with timber drop down capping.

Abstract

Abstract is an illusive stair that hones in on a modern, sleek design.



Wall rail

Square & stained



Wall rail bracket

Chrome (standard)

Upgrade options:

Black

White

The stairs feature 5mm nosing with a concealed wall stringer and feature zig zag sandwiched outer stringer holding the glass balustrade with timber handrail and posts.

All images are for illustration purposes and are to be used as a guide only. Dimensions and individual stair elements may change depending on chosen house type and stair options. Ascot 36 model shown. Upgraded lighting shown.

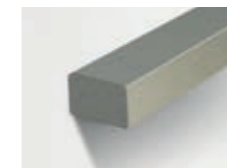
Contemporary

Combining wonderfully rich and raw materials, the Contemporary is an elegant and bold feature for your home.



Wall rail

Square & stainless steel



Wall rail bracket

Chrome (standard)

Upgrade options:

Black etch steel handrail & wall rail

Black wall bracket

The open stair comprises of a closed stringer and glass balustrade with stainless steel square handrail.

All images are for illustration purposes and are to be used as a guide only. Dimensions and individual stair elements may change depending on chosen house type and stair options. Ascot 36 model shown. Upgraded lighting shown.

Industrial

Striking in form and structure, the Industrial's contemporary design is a bold ensemble with a powerful presence.



Wall rail

Square & stained



Wall rail bracket

Chrome (standard)

Upgrade option:

Black

The open stair features an exposed central steel stringer and is paired with the Berlin balustrade.

All images are for illustration purposes and are to be used as a guide only. Dimensions and individual stair elements may change depending on chosen house type and stair options. Ascot 36 model shown. Upgraded lighting shown.

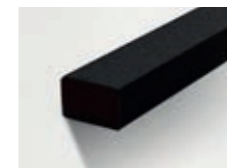
Nouveau

With its linear forms and warm tones, Nouveau makes for a notable contemporary staircase.



Wall rail

Square & black etch steel



Wall rail bracket

Chrome (standard)

Upgrade option:

Black

The open stair showcases an exposed central steel stringer with glass balustrade, black glass patch fittings and black painted steel handrail.

All images are for illustration purposes and are to be used as a guide only. Dimensions and individual stair elements may change depending on chosen house type and stair options. Ascot 36 model shown. Upgraded lighting shown.

L-shaped *winders at bottom*



All images are for illustration purposes and are to be used as a guide only. Dimensions and individual stair elements may change depending on chosen house type and stair options. Auburn 27 model shown. Upgraded lighting shown.

Standard staircase

Carpet to stairs and solid plaster wall to ground floor. Dwarf plaster wall with painted MDF capping to first floor.



Stair materials
Carpet (included material)

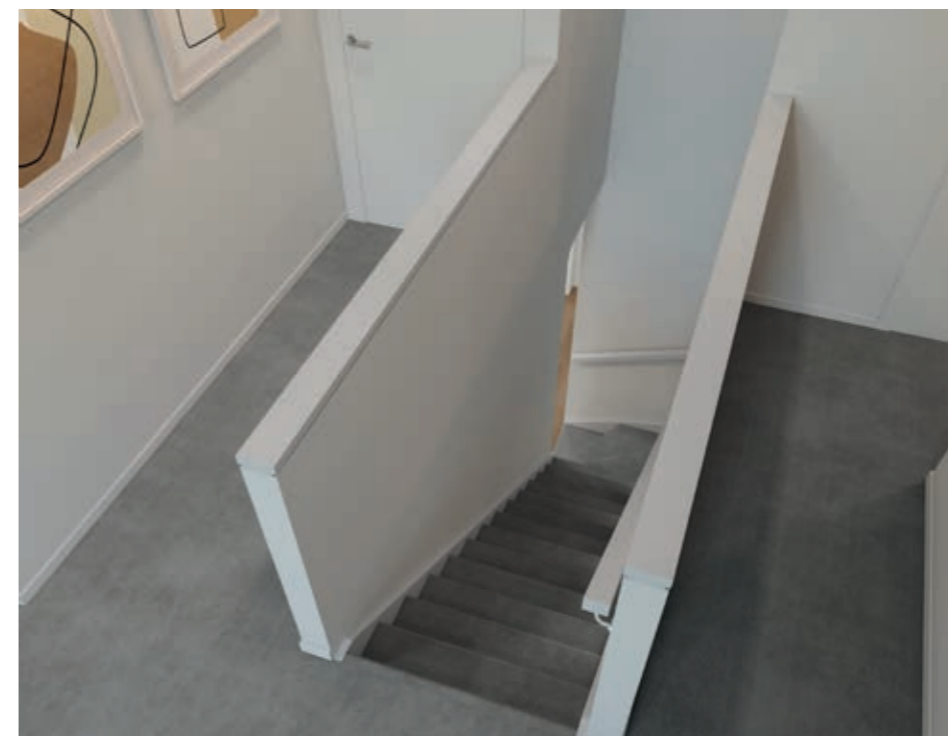
Upgrade options:
Kiln Dried Hardwood
Kiln Dried Hardwood with painted risers
Kiln Dried Hardwood with carpet runner

Wall rail
Square & painted

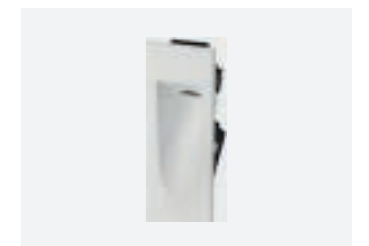


Wall rail bracket
Chrome (standard)

Upgrade options:
Black
White



Standard lighting inclusion
Lumi Lychee aluminium LED step light's (choice of white or black)



All images are for illustration purposes and are to be used as a guide only. Dimensions and individual stair elements may change depending on chosen house type and stair options. Auburn 27 model shown. Upgraded lighting shown.

Balustrade upgrade options



Santorini Page 29



Santiago Page 30



Oslo Page 31



Hampton Page 32



Berlin Page 33



Long Island Page 34



Provence Page 35



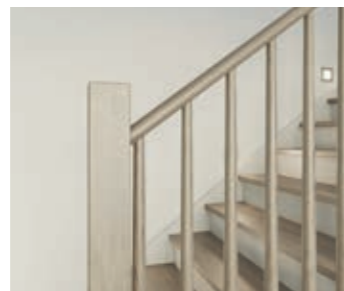
Kyoto Page 36



Byron Page 37



Bordeaux Page 38



Rhode Island Page 39

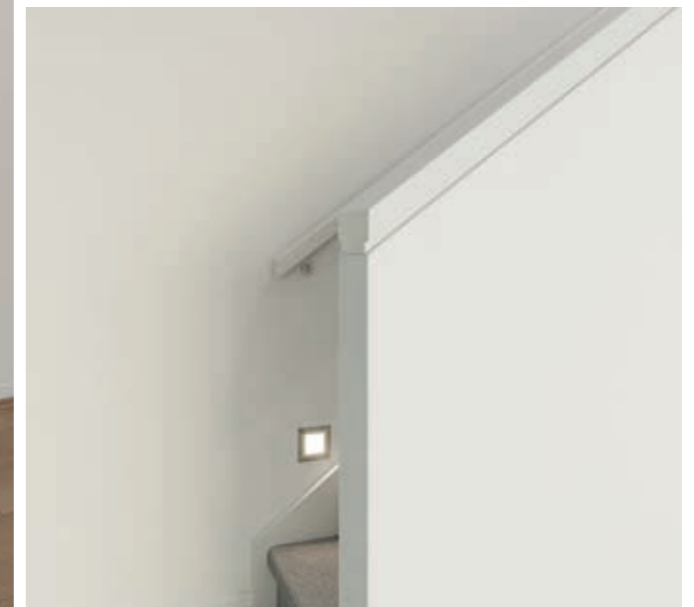
All images are for illustration purposes and are to be used as a guide only. Dimensions and individual stair elements may change depending on chosen house type and stair options. Auburn 27 model shown. Upgraded lighting shown.

Santorini

Dwarf plaster wall with painted MDF capping.



Wall rail to full flight required



Balustrade location

Dwarf plaster wall with MDF capping to full staircase including ground floor & first floor.

Stair materials

Carpet (included material)

Upgrade options:

- Kiln Dried Hardwood
- Kiln Dried Hardwood with painted risers
- Kiln Dried Hardwood with carpet runner

Wall rail

Square & painted



Wall rail bracket

Chrome (standard)

Upgrade options:

- Black
- White

All images are for illustration purposes and are to be used as a guide only. Dimensions and individual stair elements may change depending on chosen house type and stair options. Auburn 27 model shown. Upgraded lighting shown.

Santiago

Black steel rods with painted timber posts and handrail.

Balustrade location Option 1



Balustrade location Option 2



Balustrade location Option 1

Feature balustrade to ground floor only, dwarf plaster wall with MDF capping to first floor.

Balustrade location Option 2

Feature balustrade to full staircase including ground floor & first floor.

Stair materials

Carpet (included material)

Upgrade options:

- Kiln Dried Hardwood
- Kiln Dried Hardwood with painted risers
- Kiln Dried Hardwood with carpet runner

Handrail & wall rail

Round & painted



Wall rail bracket

Chrome (standard)

Upgrade options:

- Black
- White

All images are for illustration purposes and are to be used as a guide only. Dimensions and individual stair elements may change depending on chosen house type and stair options. Auburn 27 model shown. Upgraded lighting shown.

Oslo

Dwarf plaster wall with Kiln Dried Hardwood drop down capping.



Balustrade location

Feature balustrade to full staircase including ground floor & first floor.

Stair materials

Carpet (included material)

Upgrade options:

- Kiln Dried Hardwood
- Kiln Dried Hardwood with painted risers
- Kiln Dried Hardwood with carpet runner

Wall rail

Square & stained



Wall rail bracket

Chrome (standard)

Upgrade options:

- Black
- White

All images are for illustration purposes and are to be used as a guide only. Dimensions and individual stair elements may change depending on chosen house type and stair options. Auburn 27 model shown. Upgraded lighting shown.

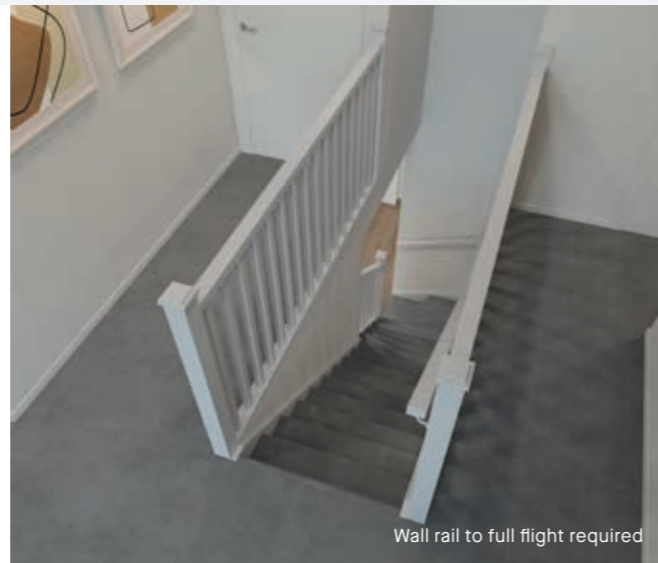
Hampton

42mm square painted timber balusters and 90mm timber posts with flat caps.

Balustrade location Option 1



Balustrade location Option 2



Balustrade location Option 1

Feature balustrade to ground floor only, dwarf plaster wall with MDF capping to first floor.

Balustrade location Option 2

Feature balustrade to full staircase including ground floor & first floor.

Stair materials

Carpet (included material)

Upgrade options:

Kiln Dried Hardwood
Kiln Dried Hardwood with painted risers
Kiln Dried Hardwood with carpet runner

Handrail & wall rail

Square & painted



Wall rail bracket

Chrome (standard)

Upgrade options:

Black
White

All images are for illustration purposes and are to be used as a guide only. Dimensions and individual stair elements may change depending on chosen house type and stair options. Auburn 27 model shown. Upgraded lighting shown.

Berlin

Black steel blades with black steel square posts and timber handrail.

Balustrade location Option 1



Balustrade location Option 2



Balustrade location Option 1

Feature balustrade to ground floor only, dwarf plaster wall with MDF capping to first floor.

Balustrade location Option 2

Feature balustrade to full staircase including ground floor & first floor.

Stair materials

Kiln Dried Hardwood (included material)*

Upgrade option:

Kiln Dried Hardwood with carpet runner

*Note: carpet is not available with this balustrade option.

Handrail & wall rail

Square & stained



Wall rail bracket

Chrome (standard)

Upgrade options:

Black
White

All images are for illustration purposes and are to be used as a guide only. Dimensions and individual stair elements may change depending on chosen house type and stair options. Auburn 27 model shown. Upgraded lighting shown.

Long Island

Painted timber balusters, timber posts with flat tops and square handrail.

Balustrade location Option 1



Balustrade location Option 2



Balustrade location Option 1

Feature balustrade to ground floor only, dwarf plaster wall with MDF capping to first floor.

Balustrade location Option 2

Feature balustrade to full staircase including ground floor & first floor.

Stair materials

Kiln Dried Hardwood with painted risers* (included material)

Upgrade options:

Kiln Dried Hardwood
Kiln Dried Hardwood with carpet runner

*Note: carpet is not available with this balustrade option.

Handrail & wall rail

Square & painted



Wall rail bracket

Chrome (standard)

Upgrade options:

Black
White

All images are for illustration purposes and are to be used as a guide only. Dimensions and individual stair elements may change depending on chosen house type and stair options. Auburn 27 model shown. Upgraded lighting shown.

Provence

Black steel twist rods with decorative timber posts and handrail.

Balustrade location Option 1



Balustrade location Option 2



Balustrade location Option 1

Feature balustrade to ground floor only, dwarf plaster wall with MDF capping to first floor.

Balustrade location Option 2

Feature balustrade to full staircase including ground floor & first floor.

Stair materials

Kiln Dried Hardwood (included material)*

Upgrade option:

Kiln Dried Hardwood with carpet runner

*Note: carpet is not available with this balustrade option.

Handrail & wall rail

Bullnose & stained



Wall rail bracket

Chrome (standard)

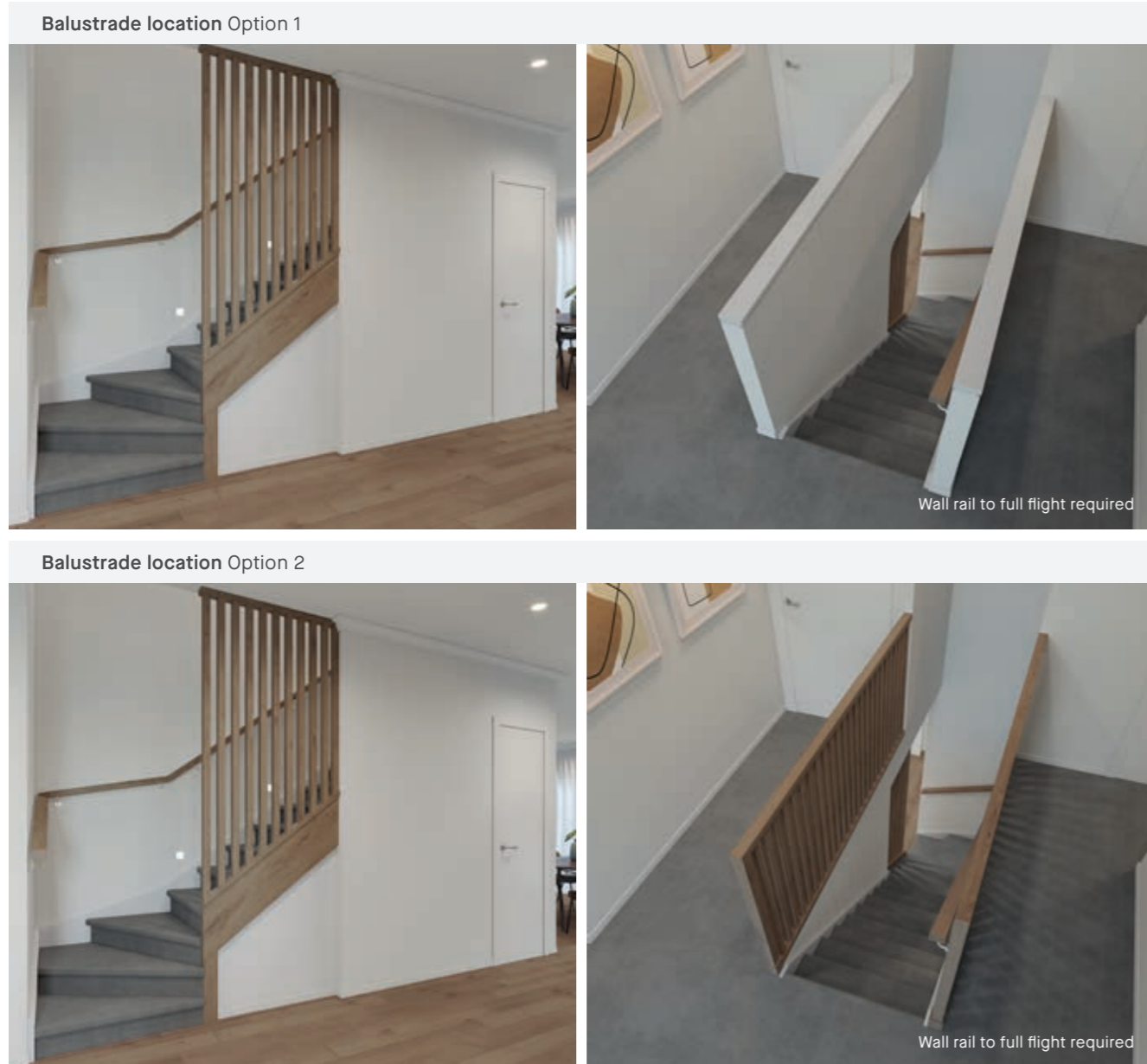
Upgrade options:

Black
White

All images are for illustration purposes and are to be used as a guide only. Dimensions and individual stair elements may change depending on chosen house type and stair options. Auburn 27 model shown. Upgraded lighting shown.

Kyoto

42mm timber batten feature screen to ground floor and standard height timber balustrade.



Balustrade location Option 1

Feature balustrade to ground floor only, dwarf plaster wall with MDF capping to first floor.

Balustrade location Option 2

Feature balustrade to full staircase including ground floor & first floor.

Stair materials

Carpet (included material)

Upgrade options:

Kiln Dried Hardwood
Kiln Dried Hardwood with carpet runner

Handrail & wall rail

Square & stained



Wall rail bracket

Chrome (standard)

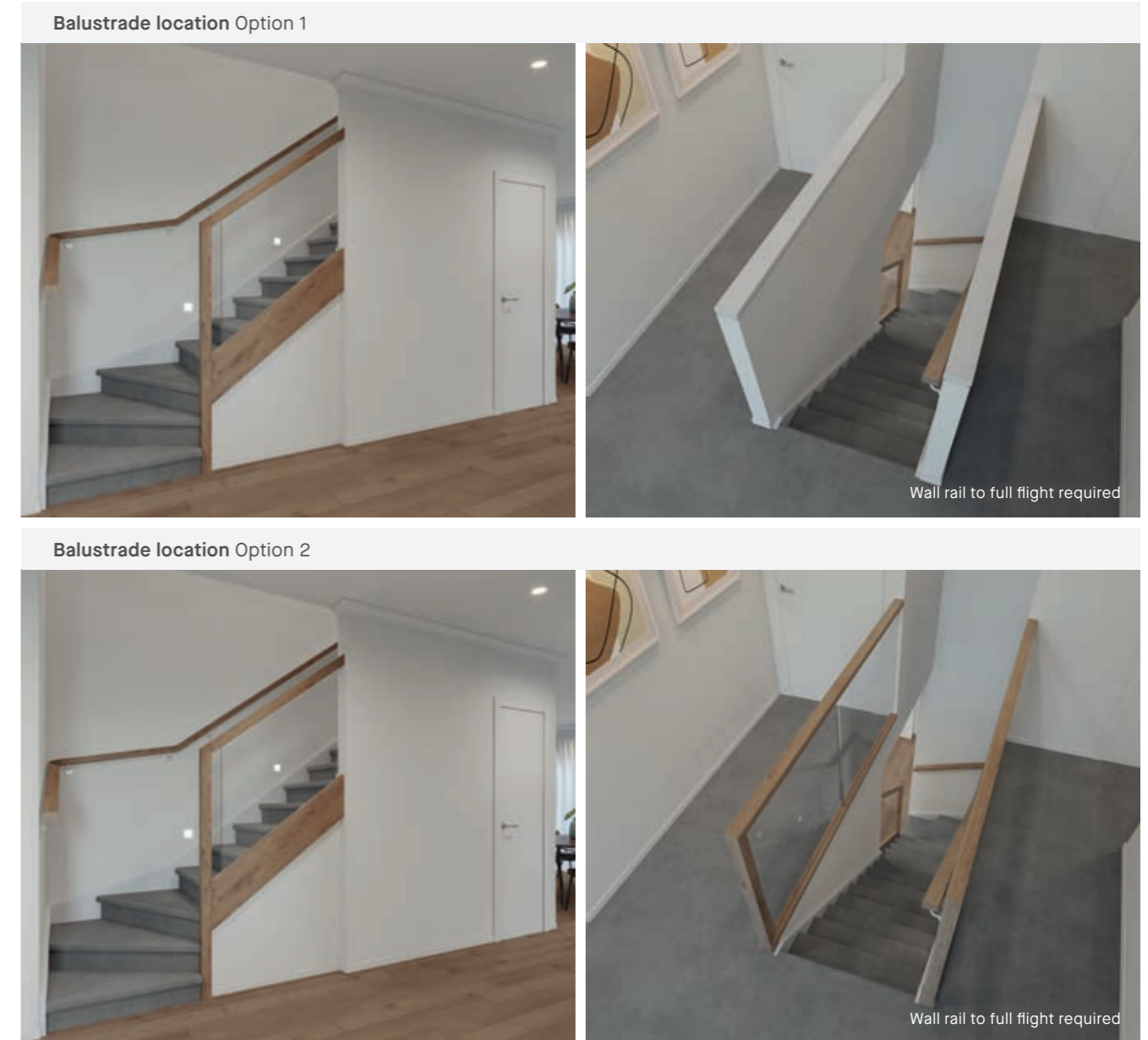
Upgrade options:

Black
White

All images are for illustration purposes and are to be used as a guide only. Dimensions and individual stair elements may change depending on chosen house type and stair options. Auburn 27 model shown. Upgraded lighting shown.

Byron

Rebated glass panels with square timber framed handrail and posts.



Balustrade location Option 1

Feature balustrade to ground floor only, dwarf plaster wall with MDF capping to first floor.

Balustrade location Option 2

Feature balustrade to full staircase including ground floor & first floor.

Stair materials

Carpet (included material)

Upgrade options:

Kiln Dried Hardwood
Kiln Dried Hardwood with painted risers
Kiln Dried Hardwood with carpet runner

Handrail & wall rail

Square & stained



Wall rail bracket

Chrome (standard)

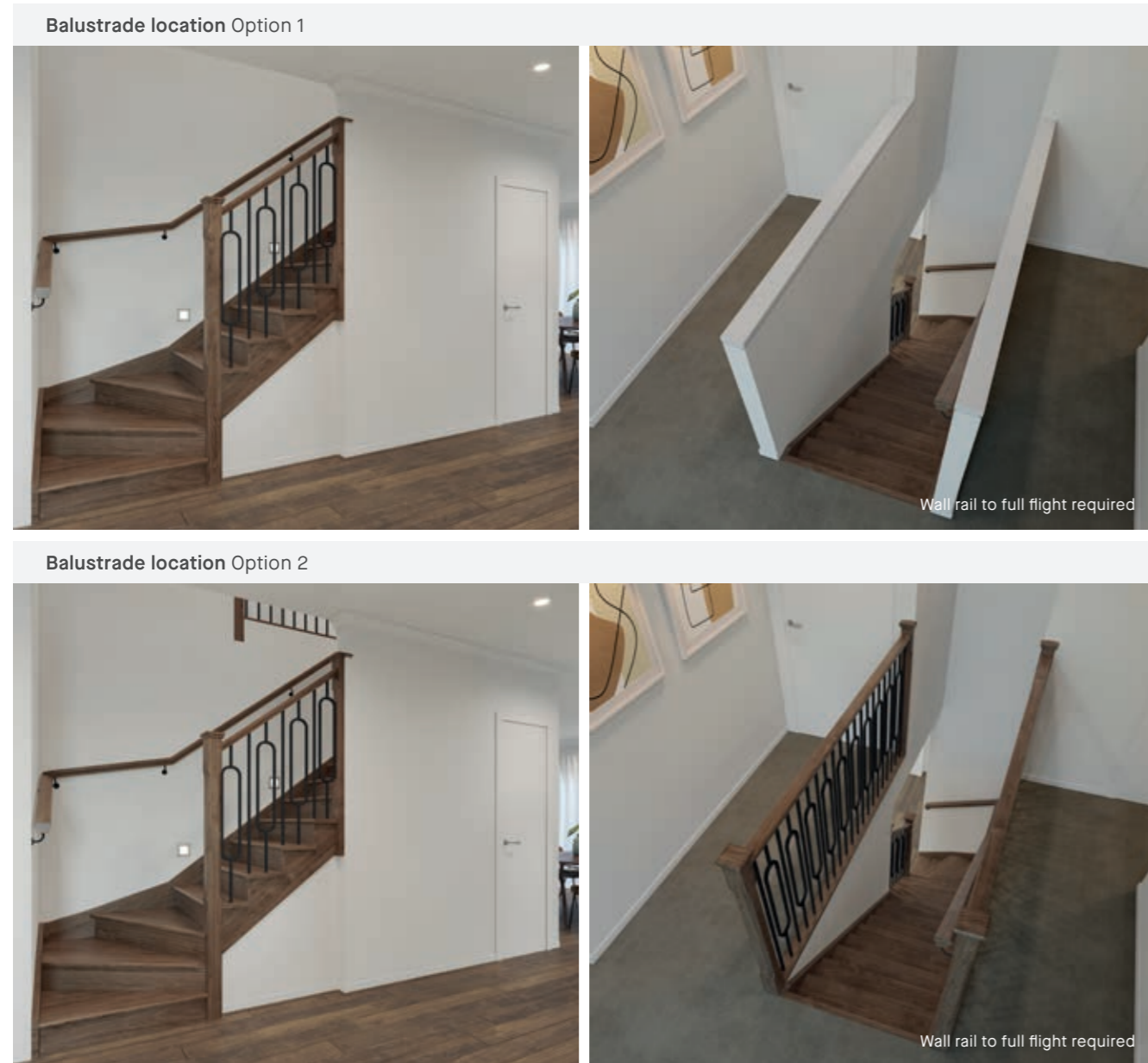
Upgrade options:

Black
White

All images are for illustration purposes and are to be used as a guide only. Dimensions and individual stair elements may change depending on chosen house type and stair options. Auburn 27 model shown. Upgraded lighting shown.

Bordeaux

Black oval steel balustrade with timber decorative posts and stained timber handrail.



Balustrade location Option 1
Feature balustrade to ground floor only, dwarf plaster wall with MDF capping to first floor.

Balustrade location Option 2
Feature balustrade to full staircase including ground floor & first floor.

Stair materials
Kiln Dried Hardwood (included material)*

Upgrade option:
Kiln Dried Hardwood with carpet runner

*Note: carpet is not available with this balustrade option.
Alternating pattern of balustrade may vary due to number of stairs and house design/size.
Double plain rods may be required near posts.

Handrail & wall rail
Bullnose & stained

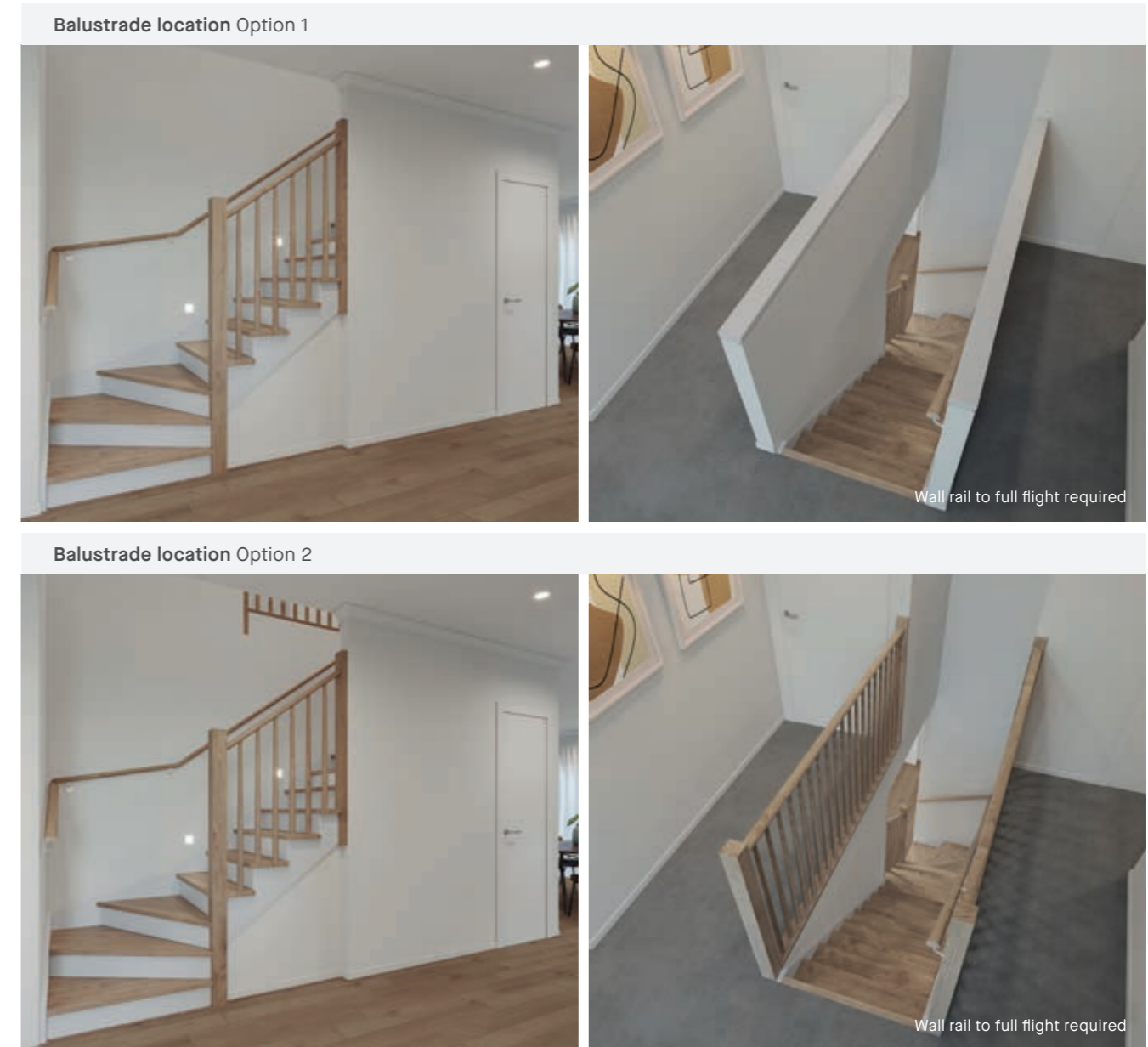
Wall rail bracket
Black (standard)



All images are for illustration purposes and are to be used as a guide only. Dimensions and individual stair elements may change depending on chosen house type and stair options. Auburn 27 model shown. Upgraded lighting shown.

Rhode Island

Stained tapered timber balusters, square timber posts with round handrail.



Balustrade location Option 1
Feature balustrade to ground floor only, dwarf plaster wall with MDF capping to first floor.

Balustrade location Option 2
Feature balustrade to full staircase including ground floor & first floor.

Stair materials
Kiln Dried Hardwood with painted risers (included material)*


Upgrade option:
Kiln Dried Hardwood with carpet runner

*Note: carpet is not available with this balustrade option.

Handrail & wall rail
Round & stained

Wall rail bracket
Chrome (standard)

Upgrade options:
Black
White



All images are for illustration purposes and are to be used as a guide only. Dimensions and individual stair elements may change depending on chosen house type and stair options. Auburn 27 model shown. Upgraded lighting shown.

Premium
designs



All images are for illustration purposes and are to be used as a guide only. Dimensions and individual stair elements may change depending on chosen house type and stair options. Auburn 27 model shown. Upgraded lighting shown.

Minimalist

Minimalistic in its design and features, this design has a subtle interplay between modern and traditional design elements.



Minimalist features 5mm nosing with concealed stringers and a plaster dwarf wall with timber drop down capping.



Wall rail
Square & stained



Wall rail bracket
Chrome (standard)

Upgrade options:
Black
White

Wall rail to full flight required

All images are for illustration purposes and are to be used as a guide only. Dimensions and individual stair elements may change depending on chosen house type and stair options. Auburn 27 model shown. Upgraded lighting shown.

Modernist

Open riser treads and custom glass balustrade makes for a sensational feature piece that creates the illusion of space within the home.



The Modernist features open riser treads and custom glass with closed stringer and glass balustrade with timber handrail to the full staircase.



Wall rail
Square & stained



Wall rail bracket
Chrome (standard)

Upgrade option:
Black

Wall rail to full flight required

All images are for illustration purposes and are to be used as a guide only. Dimensions and individual stair elements may change depending on chosen house type and stair options. Auburn 27 model shown. Upgraded lighting shown.

Abstract

Abstract is an illusive stair that hones in on a modern, sleek design.



The stairs feature 5mm nosing with a concealed wall stringer and feature zig zag sandwiched outer stringer holding the glass balustrade with timber handrail and posts.



Wall rail
Square & stained



Wall rail bracket
Chrome (standard)

Upgrade options:
Black
White

Wall rail to full flight required

All images are for illustration purposes and are to be used as a guide only. Dimensions and individual stair elements may change depending on chosen house type and stair options. Auburn 27 model shown. Upgraded lighting shown.

Contemporary

Combining wonderfully rich and raw materials, the Contemporary is an elegant and bold feature for your home.

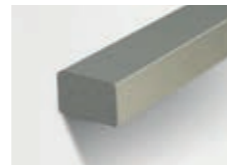


The open stair comprises of a closed stringer and glass balustrade with stainless steel square handrail.



Wall rail to full flight required

Wall rail
Square & stainless steel



Wall rail bracket
Chrome (standard)

Upgrade options:
Black etch steel handrail & wall rail
Black wall bracket

All images are for illustration purposes and are to be used as a guide only. Dimensions and individual stair elements may change depending on chosen house type and stair options. Auburn 27 model shown. Upgraded lighting shown.

Industrial

Striking in form and structure, the Industrial's contemporary design is a bold ensemble with a powerful presence.



The open stair features an exposed central steel stringer and is paired with the Berlin balustrade.



Wall rail to full flight required

Wall rail
Square & stained



Wall rail bracket
Chrome (standard)

Upgrade option:
Black

All images are for illustration purposes and are to be used as a guide only. Dimensions and individual stair elements may change depending on chosen house type and stair options. Auburn 27 model shown. Upgraded lighting shown.

Nouveau

With its linear forms and warm tones, Nouveau makes for a notable contemporary staircase.



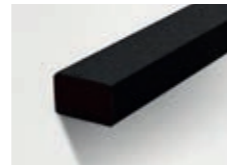
The open stair showcases an exposed central steel stringer with glass balustrade, black glass patch fittings and black painted steel handrail.



Wall rail to full flight required

Wall rail

Square & black etch steel



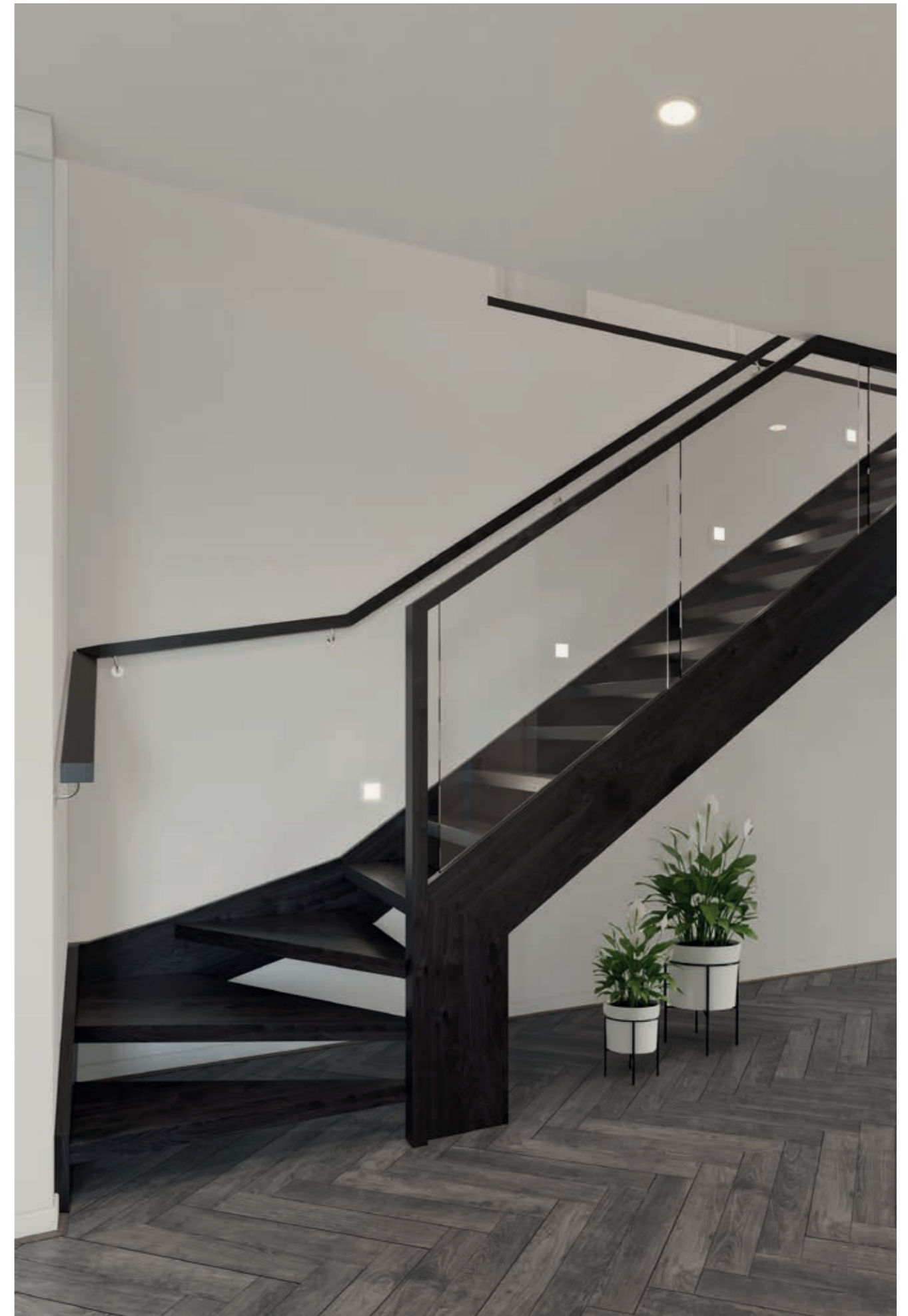
Wall rail bracket

Chrome (standard)

Upgrade option:

Black

All images are for illustration purposes and are to be used as a guide only. Dimensions and individual stair elements may change depending on chosen house type and stair options. Auburn 27 model shown. Upgraded lighting shown.



All images are for illustration purposes and are to be used as a guide only. Dimensions and individual stair elements may change depending on chosen house type and stair options. Auburn 27 model shown. Upgraded lighting shown.

L-shaped landing at bottom



All images are for illustration purposes and are to be used as a guide only. Dimensions and individual stair elements may change depending on chosen house type and stair options. Montauk 43 model shown. Upgraded lighting shown.

Standard staircase

Carpet to stairs and solid plaster wall to ground floor. Dwarf plaster wall with painted MDF capping to first floor.



Stair materials
Carpet (included material)

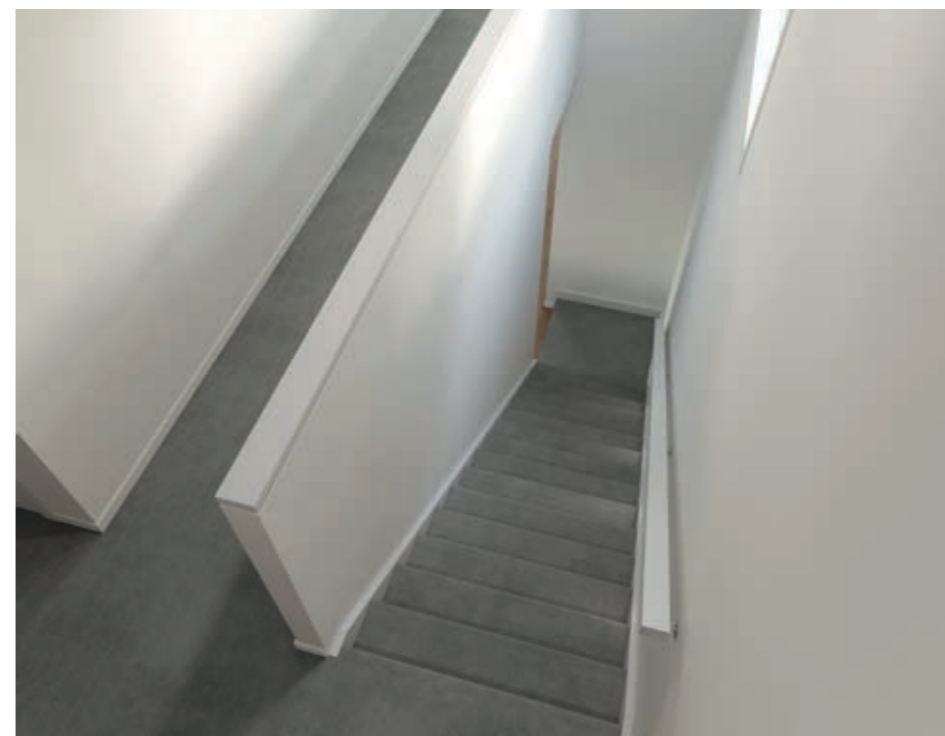
Upgrade options:
Kiln Dried Hardwood
Kiln Dried Hardwood with painted risers
Kiln Dried Hardwood with carpet runner

Wall rail
Square & painted

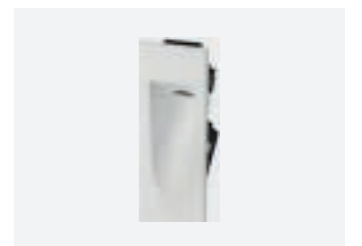


Wall rail bracket
Chrome (standard)

Upgrade options:
Black
White



Standard lighting inclusion
Lumi Lychee aluminium LED step light's (choice of white or black)



All images are for illustration purposes and are to be used as a guide only. Dimensions and individual stair elements may change depending on chosen house type and stair options. Montauk 43 model shown. Upgraded lighting shown.

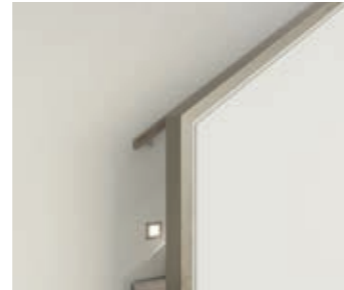
Balustrade upgrade options



Santorini Page 51



Santiago Page 52



Oslo Page 53



Hampton Page 54



Berlin Page 55



Long Island Page 56



Provence Page 57



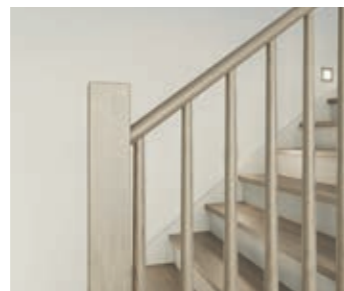
Kyoto Page 58



Byron Page 59



Bordeaux Page 60



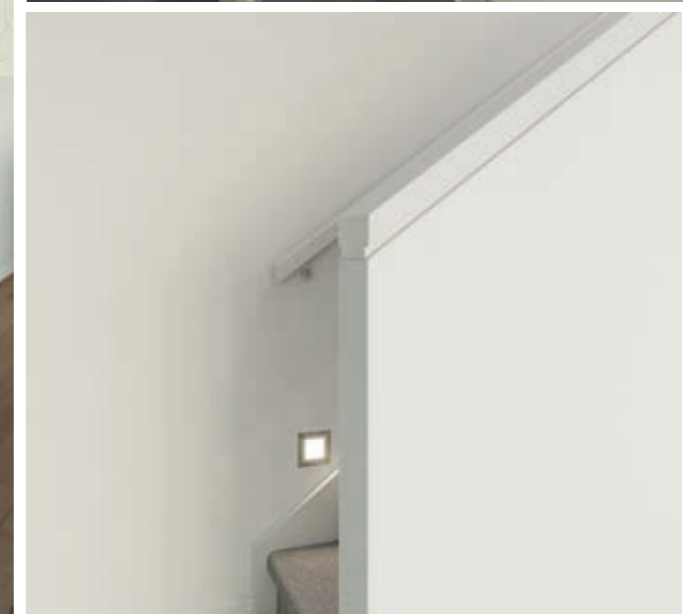
Rhode Island Page 61

Santorini

Dwarf plaster wall with painted MDF capping.



Wall rail to full flight required



Balustrade location

Dwarf plaster wall with MDF capping to full staircase including ground floor & first floor.

Stair materials

Carpet (included material)

Upgrade options:

- Kiln Dried Hardwood
- Kiln Dried Hardwood with painted risers
- Kiln Dried Hardwood with carpet runner

Wall rail

Square & painted



Wall rail bracket

Chrome (standard)

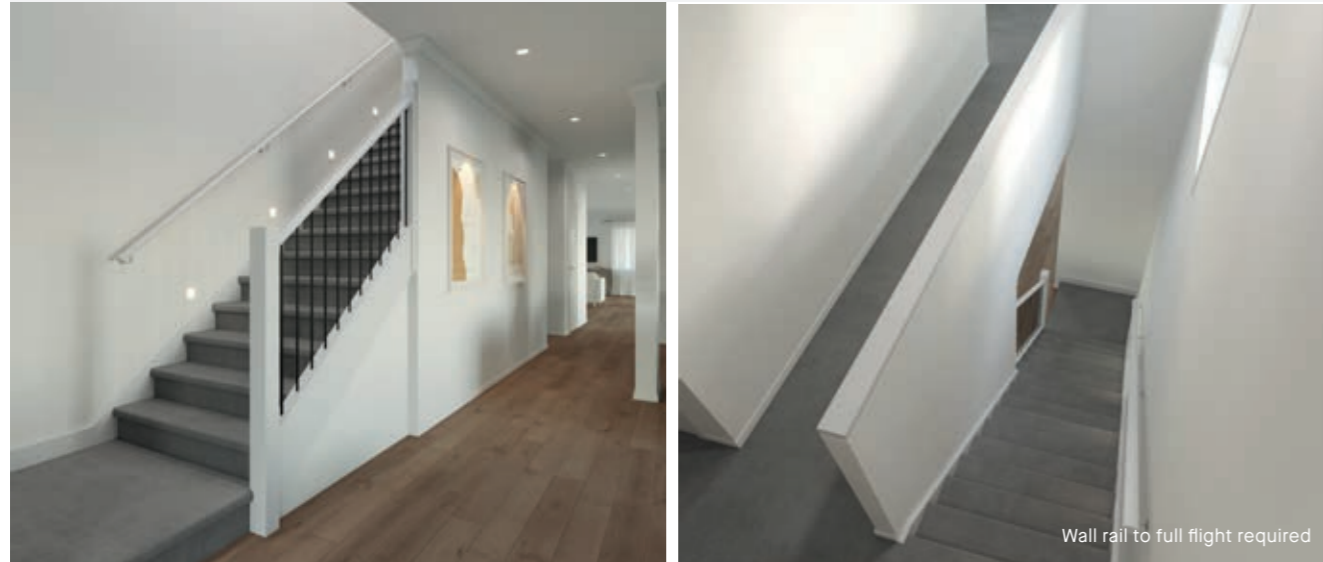
Upgrade options:

- Black
- White

Santiago

Black steel rods with painted timber posts and handrail.

Balustrade location Option 1



Balustrade location Option 2



Balustrade location Option 1

Feature balustrade to ground floor only, dwarf plaster wall with MDF capping to first floor.

Balustrade location Option 2

Feature balustrade to full staircase including ground floor & first floor.

Stair materials

Carpet (included material)

Upgrade options:

- Kiln Dried Hardwood
- Kiln Dried Hardwood with painted risers
- Kiln Dried Hardwood with carpet runner

Handrail & wall rail

Round & painted



Wall rail bracket

Chrome (standard)

Upgrade options:

- Black
- White

Oslo

Dwarf plaster wall with Kiln Dried Hardwood drop down capping.



Balustrade location

Feature balustrade to full staircase including ground floor & first floor.

Stair materials

Carpet (included material)

Upgrade options:

- Kiln Dried Hardwood
- Kiln Dried Hardwood with painted risers
- Kiln Dried Hardwood with carpet runner

Wall rail

Square & stained



Wall rail bracket

Chrome (standard)

Upgrade options:

- Black
- White

Hampton

42mm square painted timber balusters and 90mm timber posts with flat caps.

Balustrade location Option 1



Wall rail to full flight required

Balustrade location Option 2



Wall rail to full flight required

Balustrade location Option 1

Feature balustrade to ground floor only, dwarf plaster wall with MDF capping to first floor.

Balustrade location Option 2

Feature balustrade to full staircase including ground floor & first floor.

Stair materials

Carpet (included material)

Upgrade options:

- Kiln Dried Hardwood
- Kiln Dried Hardwood with painted risers
- Kiln Dried Hardwood with carpet runner

Handrail & wall rail

Square & painted



Wall rail bracket

Chrome (standard)

Upgrade options:

- Black
- White

All images are for illustration purposes and are to be used as a guide only. Dimensions and individual stair elements may change depending on chosen house type and stair options. Montauk 43 model shown. Upgraded lighting shown.

Berlin

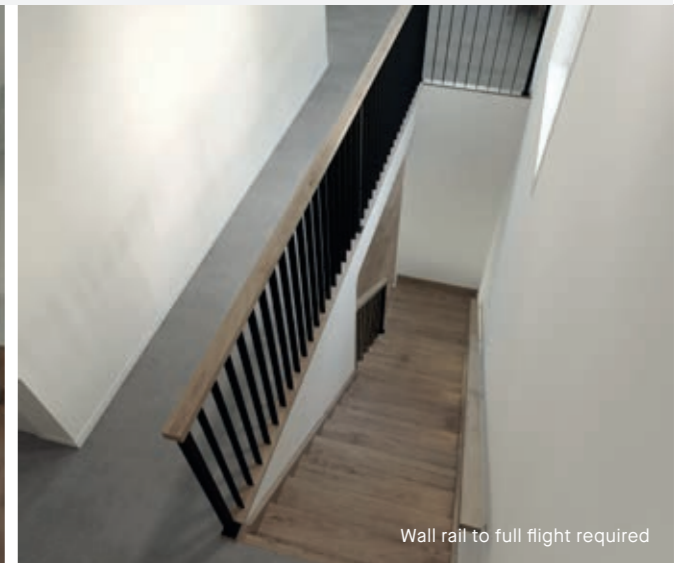
Black steel blades with black steel square posts and timber handrail.

Balustrade location Option 1



Wall rail to full flight required

Balustrade location Option 2



Wall rail to full flight required

Balustrade location Option 1

Feature balustrade to ground floor only, dwarf plaster wall with MDF capping to first floor.

Balustrade location Option 2

Feature balustrade to full staircase including ground floor & first floor.

Stair materials

Kiln Dried Hardwood (included material)*

Upgrade option:

Kiln Dried Hardwood with carpet runner

*Note: carpet is not available with this balustrade option.

Handrail & wall rail

Square & stained



Wall rail bracket

Chrome (standard)

Upgrade options:

- Black
- White

All images are for illustration purposes and are to be used as a guide only. Dimensions and individual stair elements may change depending on chosen house type and stair options. Montauk 43 model shown. Upgraded lighting shown.

Long Island

Painted timber balusters, timber posts with flat tops and square handrail.

Balustrade location Option 1



Wall rail to full flight required

Balustrade location Option 2



Wall rail to full flight required

Balustrade location Option 1

Feature balustrade to ground floor only, dwarf plaster wall with MDF capping to first floor.

Balustrade location Option 2

Feature balustrade to full staircase including ground floor & first floor.

Stair materials

Kiln Dried Hardwood with painted risers* (included material)

Upgrade options:

Kiln Dried Hardwood
Kiln Dried Hardwood with carpet runner

*Note: carpet is not available with this balustrade option.

Handrail & wall rail

Square & painted



Wall rail bracket

Chrome (standard)

Upgrade options:

Black
White

All images are for illustration purposes and are to be used as a guide only. Dimensions and individual stair elements may change depending on chosen house type and stair options. Montauk 43 model shown. Upgraded lighting shown.

Provence

Black steel twist rods with decorative timber posts and handrail.

Balustrade location Option 1



Wall rail to full flight required

Balustrade location Option 2



Wall rail to full flight required

Balustrade location Option 1

Feature balustrade to ground floor only, dwarf plaster wall with MDF capping to first floor.

Balustrade location Option 2

Feature balustrade to full staircase including ground floor & first floor.

Stair materials

Kiln Dried Hardwood (included material)*

Upgrade option:

Kiln Dried Hardwood with carpet runner

*Note: carpet is not available with this balustrade option.

Handrail & wall rail

Bullnose & stained



Wall rail bracket

Chrome (standard)

Upgrade options:

Black
White

All images are for illustration purposes and are to be used as a guide only. Dimensions and individual stair elements may change depending on chosen house type and stair options. Montauk 43 model shown. Upgraded lighting shown.

Kyoto

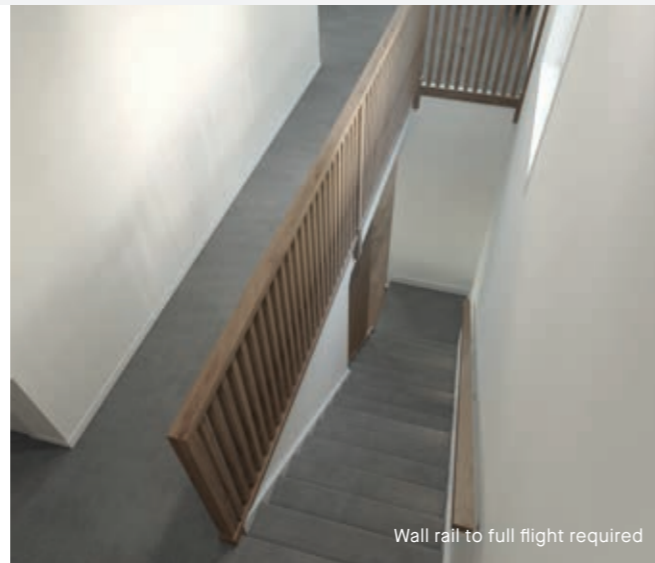
42mm timber batten feature screen to ground floor and standard height timber balustrade.

Balustrade location Option 1



Wall rail to full flight required

Balustrade location Option 2



Wall rail to full flight required

Balustrade location Option 1

Feature balustrade to ground floor only, dwarf plaster wall with MDF capping to first floor.

Balustrade location Option 2

Feature balustrade to full staircase including ground floor & first floor.

Stair materials

Carpet (included material)

Upgrade options:

Kiln Dried Hardwood
Kiln Dried Hardwood with carpet runner

Handrail & wall rail

Square & stained



Wall rail bracket

Chrome (standard)

Upgrade options:

Black
White

All images are for illustration purposes and are to be used as a guide only. Dimensions and individual stair elements may change depending on chosen house type and stair options. Montauk 43 model shown. Upgraded lighting shown.

Byron

Rebated glass panels with square timber framed handrail and posts.

Balustrade location Option 1



Wall rail to full flight required

Balustrade location Option 2



Wall rail to full flight required

Balustrade location Option 1

Feature balustrade to ground floor only, dwarf plaster wall with MDF capping to first floor.

Balustrade location Option 2

Feature balustrade to full staircase including ground floor & first floor.

Stair materials

Carpet (included material)

Upgrade options:

Kiln Dried Hardwood
Kiln Dried Hardwood with painted risers
Kiln Dried Hardwood with carpet runner

Handrail & wall rail

Square & stained



Wall rail bracket

Chrome (standard)

Upgrade options:

Black
White

All images are for illustration purposes and are to be used as a guide only. Dimensions and individual stair elements may change depending on chosen house type and stair options. Montauk 43 model shown. Upgraded lighting shown.

Bordeaux

Black oval steel balustrade with timber decorative posts and stained timber handrail

Balustrade location Option 1



Balustrade location Option 2



Balustrade location Option 1

Feature balustrade to ground floor only, dwarf plaster wall with MDF capping to first floor.

Balustrade location Option 2

Feature balustrade to full staircase including ground floor & first floor.

Stair materials

Kiln Dried Hardwood (included material)*

Upgrade option:

Kiln Dried Hardwood with carpet runner

*Note: carpet is not available with this balustrade option.
Alternating pattern of balustrade may vary due to number of stairs and house design/size. Double plain rods may be required near posts.

Handrail & wall rail

Bullnose & stained



Wall rail bracket

Black (standard)

All images are for illustration purposes and are to be used as a guide only. Dimensions and individual stair elements may change depending on chosen house type and stair options. Montauk 43 model shown. Upgraded lighting shown.

Rhode Island

Stained tapered timber balusters, square timber posts with round handrail

Balustrade location Option 1



Balustrade location Option 2



Balustrade location Option 1

Feature balustrade to ground floor only, dwarf plaster wall with MDF capping to first floor.

Balustrade location Option 2

Feature balustrade to full staircase including ground floor & first floor.

Stair materials

Kiln Dried Hardwood with painted risers (included material)*

Upgrade option:

Kiln Dried Hardwood with carpet runner

*Note: carpet is not available with this balustrade option.

Handrail & wall rail

Round & stained



Wall rail bracket

Chrome (standard)

Upgrade options:

Black
White

All images are for illustration purposes and are to be used as a guide only. Dimensions and individual stair elements may change depending on chosen house type and stair options. Montauk 43 model shown. Upgraded lighting shown.

Premium
designs



All images are for illustration purposes and are to be used as a guide only. Dimensions and individual stair elements may change depending on chosen house type and stair options. Montauk 43 model shown. Upgraded lighting shown.

Minimalist

Minimalistic in its design and features, this design has a subtle interplay between modern and traditional design elements.



Minimalist features 5mm nosing with concealed stringers and a plaster dwarf wall with timber drop down capping.



Wall rail to full flight required

All images are for illustration purposes and are to be used as a guide only. Dimensions and individual stair elements may change depending on chosen house type and stair options. Montauk 43 model shown. Upgraded lighting shown.

Wall rail
Square & stained



Wall rail bracket
Chrome (standard)

Upgrade options:
Black
White

Modernist

Open riser treads and custom glass balustrade makes for a sensational feature piece that creates the illusion of space within the home.



The Modernist features open riser treads and custom glass with closed stringer and glass balustrade with timber handrail to the full staircase.



Wall rail to full flight required

Wall rail
Square & stained



Wall rail bracket
Chrome (standard)

Upgrade option:
Black

All images are for illustration purposes and are to be used as a guide only. Dimensions and individual stair elements may change depending on chosen house type and stair options. Montauk 43 model shown. Upgraded lighting shown.

Abstract

Abstract is an illusive stair that hones in on a modern, sleek design.



The stairs feature 5mm nosing with a concealed wall stringer and feature zig zag sandwiched outer stringer holding the glass balustrade with timber handrail and posts.



Wall rail to full flight required

Wall rail
Square & stained



Wall rail bracket
Chrome (standard)

Upgrade options:
Black
White

All images are for illustration purposes and are to be used as a guide only. Dimensions and individual stair elements may change depending on chosen house type and stair options. Montauk 43 model shown. Upgraded lighting shown.

Contemporary

Combining wonderfully rich and raw materials, the Contemporary is an elegant and bold feature for your home.

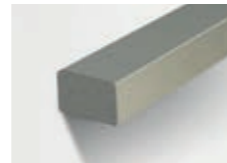


The open stair comprises of a closed stringer and glass balustrade with stainless steel square handrail.



Wall rail

Square & stainless steel



Wall rail bracket

Chrome (standard)

Upgrade options:

Black etch steel handrail & wall rail
Black wall bracket

All images are for illustration purposes and are to be used as a guide only. Dimensions and individual stair elements may change depending on chosen house type and stair options. Montauk 43 model shown. Upgraded lighting shown.

Industrial

Striking in form and structure, the Industrial's contemporary design is a bold ensemble with a powerful presence.



The open stair features an exposed central steel stringer and is paired with the Berlin balustrade.



Wall rail

Square & stained



Wall rail bracket

Chrome (standard)

Upgrade option:

Black

All images are for illustration purposes and are to be used as a guide only. Dimensions and individual stair elements may change depending on chosen house type and stair options. Montauk 43 model shown. Upgraded lighting shown.

Nouveau

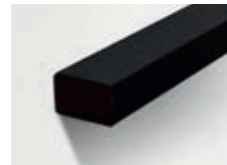
With its linear forms and warm tones, Nouveau makes for a notable contemporary staircase.



The open stair showcases an exposed central steel stringer with glass balustrade, black glass patch fittings and black painted steel handrail.



Wall rail
Square & black etch steel



Wall rail bracket
Chrome (standard)

Upgrade option:
Black

Wall rail to full flight required

All images are for illustration purposes and are to be used as a guide only. Dimensions and individual stair elements may change depending on chosen house type and stair options. Montauk 43 model shown. Upgraded lighting shown.



All images are for illustration purposes and are to be used as a guide only. Dimensions and individual stair elements may change depending on chosen house type and stair options. Montauk 43 model shown. Upgraded lighting shown.

L-shaped landing to bottom & void



All images are for illustration purposes and are to be used as a guide only. Dimensions and individual stair elements may change depending on chosen house type and stair options. Montauk 49 model shown. Upgraded lighting shown.

Standard staircase

Carpet to stairs and dwarf plaster with painted mdf capping to ground and first floor.



All images are for illustration purposes and are to be used as a guide only. Dimensions and individual stair elements may change depending on chosen house type and stair options. Montauk 49 model shown. Upgraded lighting shown.

Stair materials
Carpet (included material)

Upgrade options:
Kiln Dried Hardwood
Kiln Dried Hardwood with painted risers
Kiln Dried Hardwood with carpet runner

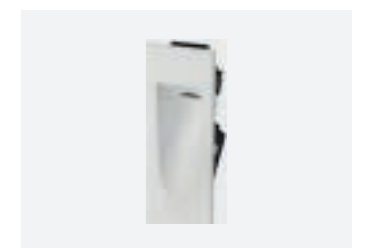
Wall rail
Square & painted



Wall rail bracket
Chrome (standard)

Upgrade options:
Black
White

Standard lighting inclusion
Lumi Lychee aluminium LED step light's (choice of white or black)



Balustrade upgrade options



Santiago Page 73



Oslo Page 74



Hampton Page 75



Berlin Page 76



Long Island Page 77



Provence Page 78



Byron Page 79



Bordeaux Page 80



Rhode Island Page 81

Santiago

Black steel rods with painted timber posts and handrail.

Balustrade location Option 1



Balustrade location Option 2



Balustrade location Option 1

Feature balustrade to ground floor only, dwarf plaster wall with MDF capping to first floor.

Balustrade location Option 2

Feature balustrade to full staircase including ground floor & first floor.

Stair materials

Carpet (included material)

Upgrade options:

- Kiln Dried Hardwood
- Kiln Dried Hardwood with painted risers
- Kiln Dried Hardwood with carpet runner

Handrail

Round & painted



Oslo

Dwarf plaster wall with Kiln Dried Hardwood drop down capping.



Balustrade location

Feature balustrade to ground floor and first floor.

Stair materials

Carpet (included material)

Upgrade options:

- Kiln Dried Hardwood
- Kiln Dried Hardwood with painted risers
- Kiln Dried Hardwood with carpet runner

Wall rail

Square & stained



Wall rail bracket

Chrome (standard)

Upgrade options:

- Black
- White

All images are for illustration purposes and are to be used as a guide only. Dimensions and individual stair elements may change depending on chosen house type and stair options. Montauk 49 model shown. Upgraded lighting shown.

Hampton

42mm square painted timber balusters and 90mm timber posts with flat caps.



Balustrade location Option 1

Feature balustrade to ground floor only, dwarf plaster wall with MDF capping to first floor.

Balustrade location Option 2

Feature balustrade to full staircase including ground floor & first floor.

Stair materials

Carpet (included material)

Upgrade options:

- Kiln Dried Hardwood
- Kiln Dried Hardwood with painted risers
- Kiln Dried Hardwood with carpet runner

Handrail

Square & painted



All images are for illustration purposes and are to be used as a guide only. Dimensions and individual stair elements may change depending on chosen house type and stair options. Montauk 49 model shown. Upgraded lighting shown.

Berlin

Black steel blades with black steel square posts and timber handrail.

Balustrade location Option 1



Balustrade location Option 2



Balustrade location Option 1

Feature balustrade to ground floor only, dwarf plaster wall with MDF capping to first floor.

Balustrade location Option 2

Feature balustrade to full staircase including ground floor & first floor.

Stair materials

Kiln Dried Hardwood (included material)*

Upgrade option:

Kiln Dried Hardwood with carpet runner

*Note: carpet is not available with this balustrade option.

Handrail

Square & stained



All images are for illustration purposes and are to be used as a guide only. Dimensions and individual stair elements may change depending on chosen house type and stair options. Montauk 49 model shown. Upgraded lighting shown.

Long Island

Painted timber balusters, timber posts with flat tops and square handrail.

Balustrade location Option 1



Balustrade location Option 2



Balustrade location Option 1

Feature balustrade to ground floor only, dwarf plaster wall with MDF capping to first floor.

Balustrade location Option 2

Feature balustrade to full staircase including ground floor & first floor.

Stair materials

Kiln Dried Hardwood with painted risers* (included material)

Upgrade options:

Kiln Dried Hardwood
Kiln Dried Hardwood with carpet runner

*Note: carpet is not available with this balustrade option.

Handrail

Square & painted



All images are for illustration purposes and are to be used as a guide only. Dimensions and individual stair elements may change depending on chosen house type and stair options. Montauk 49 model shown. Upgraded lighting shown.

Provence

Black steel twist rods with decorative timber posts and handrail.

Balustrade location Option 1



Balustrade location Option 2



Balustrade location Option 1

Feature balustrade to ground floor only, dwarf plaster wall with MDF capping to first floor.

Balustrade location Option 2

Feature balustrade to full staircase including ground floor & first floor.

Stair materials

Kiln Dried Hardwood (included material)*

Upgrade option:

Kiln Dried Hardwood with carpet runner

*Note: carpet is not available with this balustrade option.

Handrail

Bullnose & stained



All images are for illustration purposes and are to be used as a guide only. Dimensions and individual stair elements may change depending on chosen house type and stair options. Montauk 49 model shown. Upgraded lighting shown.

Byron

Rebated glass panels with square timber framed handrail and posts.

Balustrade location Option 1



Balustrade location Option 2



Balustrade location Option 1

Feature balustrade to ground floor only, dwarf plaster wall with MDF capping to first floor.

Balustrade location Option 2

Feature balustrade to full staircase including ground floor & first floor.

Stair materials

Carpet (included material)

Upgrade options:

Kiln Dried Hardwood
Kiln Dried Hardwood with carpet runner

Handrail

Square & stained



All images are for illustration purposes and are to be used as a guide only. Dimensions and individual stair elements may change depending on chosen house type and stair options. Montauk 49 model shown. Upgraded lighting shown.

Bordeaux

Black oval steel balustrade with timber decorative posts and stained timber handrail

Balustrade location Option 1



Balustrade location Option 2



Balustrade location Option 1

Feature balustrade to ground floor only, dwarf plaster wall with MDF capping to first floor.

Balustrade location Option 2

Feature balustrade to full staircase including ground floor & first floor.

Stair materials

Kiln Dried Hardwood (included material)*

Upgrade option:

Kiln Dried Hardwood with carpet runner

*Note: carpet is not available with this balustrade option.
Alternating pattern of balustrade may vary due to number of stairs and house design/size. Double plain rods may be required near posts.

Handrail

Bullnose & stained



All images are for illustration purposes and are to be used as a guide only. Dimensions and individual stair elements may change depending on chosen house type and stair options. Montauk 49 model shown. Upgraded lighting shown.

Rhode Island

Stained tapered timber balusters, square timber posts with round handrail

Balustrade location Option 1



Balustrade location Option 2



Balustrade location Option 1

Feature balustrade to ground floor only, dwarf plaster wall with MDF capping to first floor.

Balustrade location Option 2

Feature balustrade to full staircase including ground floor & first floor.

Stair materials

Kiln Dried Hardwood with painted risers (included material)*

Upgrade option:

Kiln Dried Hardwood with carpet runner

*Note: carpet is not available with this balustrade option.

Handrail

Round & stained



All images are for illustration purposes and are to be used as a guide only. Dimensions and individual stair elements may change depending on chosen house type and stair options. Montauk 49 model shown. Upgraded lighting shown.

Premium
designs



All images are for illustration purposes and are to be used as a guide only. Dimensions and individual stair elements may change depending on chosen house type and stair options. Montauk 49 model shown. Upgraded lighting shown.

Minimalist

Minimalistic in its design and features, with subtle interplay between modern and traditional design elements.



Minimalist features 5mm nosing with concealed stringers and a plaster dwarf wall with timber drop down capping.



Wall rail
Square & stained



Wall rail bracket
Chrome (standard)
Upgrade options:
Black
White

Wall rail to full flight required

All images are for illustration purposes and are to be used as a guide only. Dimensions and individual stair elements may change depending on chosen house type and stair options. Montauk 49 model shown. Upgraded lighting shown.

Modernist

Open riser treads and custom glass balustrade makes for a sensational feature piece.



The Modernist features open riser treads and custom glass with closed stringer and glass balustrade with timber handrail to the full staircase.



Handrail
Square & stained



All images are for illustration purposes and are to be used as a guide only. Dimensions and individual stair elements may change depending on chosen house type and stair options. Montauk 49 model shown. Upgraded lighting shown.

Abstract

Abstract is an illusive stair that hones in on a modern, sleek design.



The stairs feature 5mm nosing with a concealed wall stringer and feature zig zag sandwiched outer stringer holding the glass balustrade with timber handrail and posts.



Handrail
Square & stained



All images are for illustration purposes and are to be used as a guide only. Dimensions and individual stair elements may change depending on chosen house type and stair options. Montauk 49 model shown. Upgraded lighting shown.

Contemporary

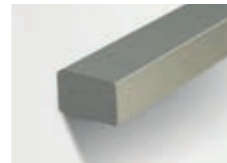
Combining wonderfully rich and raw materials, the Contemporary is an elegant and bold feature for your home.



The open stair comprises of a closed stringer and glass balustrade with stainless steel square handrail.



Handrail
Square & stainless steel



Upgrade options:
Black etch steel handrail & wall rail
Black wall bracket

All images are for illustration purposes and are to be used as a guide only. Dimensions and individual stair elements may change depending on chosen house type and stair options. Montauk 49 model shown. Upgraded lighting shown.

Industrial

A contemporary design that is a bold ensemble with a striking presence.



The open stair features an exposed central steel stringer and is paired with the Berlin balustrade.



Handrail
Square & stained



All images are for illustration purposes and are to be used as a guide only. Dimensions and individual stair elements may change depending on chosen house type and stair options. Montauk 49 model shown. Upgraded lighting shown.

Nouveau

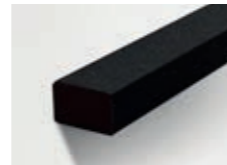
With its linear forms and warm tones, Nouveau makes for a notable contemporary staircase.



The open stair showcases an exposed central steel stringer with glass balustrade, black glass patch fittings and black painted steel handrail.



Handrail
Square Black Etched Steel



All images are for illustration purposes and are to be used as a guide only. Dimensions and individual stair elements may change depending on chosen house type and stair options. Montauk 49 model shown. Upgraded lighting shown.



All images are for illustration purposes and are to be used as a guide only. Dimensions and individual stair elements may change depending on chosen house type and stair options. Montauk 49 model shown. Upgraded lighting shown.

Staircase material options



Carpet

Kiln Dried Hardwood



Kiln Dried Hardwood with painted risers

Kiln Dried Hardwood with carpet runners

Staircase glossary

When you're not in the know, staircase terminology can be complex. Below we've outlined some common terms.



- 1 Riser
- 2 Tread
- 3 Cut Stringer
- 4 Closed Stringer
- 5 Closed Flight
- 6 Landing
- 7 Half Post
- 8 Open Flight
- 9 Capping
- 10 Bracket
- 11 Wall Rail
- 12 Flight Balustrade
- 13 Winders
- 14 Flight Rail
- 15 Level Balustrade
- 16 Newel Post
- 17 Level Rail
- 18 Fascia

All images are for illustration purposes and are to be used as a guide only. Dimensions and individual stair elements may change depending on chosen house type and stair options. Montauk 49 model shown. Upgraded lighting shown.

Please note this image is for illustrative purposes only. Staircase style and shape not available.



Explore our home designs at
boutiquehomes.com.au

boutique
homes

Speak with a consultant
9674 4500

Disclaimer ©2026, all plans are protected by copyright and are owned by ABN Group Pty Ltd. Plans are based on a modern facade. Images used in this brochure are for illustrative purposes only and may depict fixtures, finishes, features, furnishings, lighting and landscaping not included in standard pricing or supplied by Boutique Homes including, but not limited to, flooring, 2550mm high ceilings. For more information on the pricing and specification of these products please contact one of our New Homes Consultants. Boutique Homes may at its discretion determine how long it wants to offer the products set out in this brochure. Boutique Homes is entitled to vary all its products and pricing at its discretion at any time. See BoutiqueHomes.com.au for further details. The building practitioner is ABN Group (Vic) Pty Ltd t/as Boutique Homes, registration number CBD-U 49215. All information contained within this brochure was accurate at time of publication June 2026. BH0709