

Straight
designs

boutique
homes



Discover a range of staircase styles to complement your style. We've partnered with Australia's leading staircase specialists to offer a selection that effortlessly blends form and function.

- 4 Standard staircase
- 6 Balustrade upgrade options
- 7 Santorini
- 8 Santiago
- 9 Oslo
- 10 Hampton
- 11 Berlin
- 12 Long Island
- 13 Provence
- 14 Kyoto
- 15 Byron
- 16 Bordeaux
- 17 Rhode Island
- 18 Premium staircase designs**
- 18 Minimalist
- 19 Modernist
- 20 Abstract
- 21 Contemporary
- 22 Industrial
- 23 Nouveau
- 24 Stair material options
- 27 Staircase glossary

Standard staircase

Carpet to stairs and dwarf plaster wall with painted MDF capping to ground and first floor.

Stair materials
Carpet (included material)

Upgrade options:
Kiln Dried Hardwood
Kiln Dried Hardwood with painted risers
Kiln Dried Hardwood with carpet runner

Wall rail & capping
Square & painted



Wall rail bracket
Chrome (standard)

Upgrade options:
Black
White

Standard lighting inclusion

Lumi Lychee aluminium LED step light's (choice of white or black)



All images are for illustration purposes and are to be used as a guide only. Dimensions and individual stair elements may change depending on chosen house type and stair options. Collins 31 model shown. Upgraded lighting shown.



All images are for illustration purposes and are to be used as a guide only. Dimensions and individual stair elements may change depending on chosen house type and stair options. Collins 31 model shown. Upgraded lighting shown.

Balustrade upgrade options



Santorini Page 7



Santiago Page 8



Oslo Page 9



Hampton Page 10



Berlin Page 11



Long Island Page 12



Provence Page 13



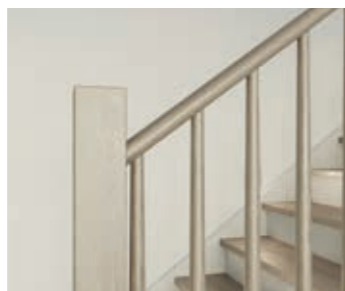
Kyoto Page 14



Byron Page 15



Bordeaux Page 16



Rhode Island Page 17

Santorini

Dwarf plaster wall with painted MDF capping.



Wall rail to full length of stair required

Balustrade location

Dwarf plaster wall with MDF capping to full staircase including ground & first floor.

Stair materials

Carpet (included material)

Upgrade options:

- Kiln Dried Hardwood
- Kiln Dried Hardwood with painted risers
- Kiln Dried Hardwood with carpet runner

Wall rail

Square & painted



Wall rail bracket

Chrome (standard)

Upgrade options:

- Black
- White

Santiago

Black steel rods with painted timber posts and handrail.

Balustrade location Option 1



Balustrade location Option 2



Balustrade location Option 1

Feature balustrade to ground floor only, dwarf plaster wall with MDF capping to first floor.

Balustrade location Option 2

Feature balustrade to full staircase including ground and first floor.

Stair materials

Carpet (included material)

Upgrade options:

- Kiln Dried Hardwood
- Kiln Dried Hardwood with painted risers
- Kiln Dried Hardwood with carpet runner

Handrail & wall rail

Round & painted



Wall rail bracket

Chrome (standard)

Upgrade options:

- Black
- White

All images are for illustration purposes and are to be used as a guide only. Dimensions and individual stair elements may change depending on chosen house type and stair options. Collins 31 model shown. Upgraded lighting shown.

Oslo

Dwarf plaster wall with Kiln Dried Hardwood drop down capping.



Balustrade location

Feature balustrade to full staircase including ground and first floor.

Stair materials

Carpet (included material)

Upgrade options:

- Kiln Dried Hardwood
- Kiln Dried Hardwood with painted risers
- Kiln Dried Hardwood with carpet runner

Wall rail

Square & stained



Wall rail bracket

Chrome (standard)

Upgrade options:

- Black
- White

All images are for illustration purposes and are to be used as a guide only. Dimensions and individual stair elements may change depending on chosen house type and stair options. Collins 31 model shown. Upgraded lighting shown.

Hampton

42mm square painted timber balusters and 90mm timber posts with flat caps.

Balustrade location Option 1



Balustrade location Option 2



Balustrade location Option 1

Feature balustrade to ground floor only, dwarf plaster wall with MDF capping to first floor.

Balustrade location Option 2

Feature balustrade to full staircase including ground and first floor.

Stair materials

Carpet (included material)

Upgrade options:

- Kiln Dried Hardwood
- Kiln Dried Hardwood with painted risers
- Kiln Dried Hardwood with carpet runner

Handrail & wall rail

Square & painted



Wall rail bracket

Chrome (standard)

Upgrade options:

- Black
- White

All images are for illustration purposes and are to be used as a guide only. Dimensions and individual stair elements may change depending on chosen house type and stair options. Collins 31 model shown. Upgraded lighting shown.

Berlin

Black steel blades with black steel square posts and timber handrail.

Balustrade location Option 1



Balustrade location Option 2



Balustrade location Option 1

Feature balustrade to ground floor only, dwarf plaster wall with MDF capping to first floor.

Balustrade location Option 2

Feature balustrade to full staircase including ground and first floor.

Stair materials

Kiln Dried Hardwood (included material)*

Upgrade option:

Kiln Dried Hardwood with carpet runner

*Note: carpet is not available with this balustrade option.

Handrail & wall rail

Square & stained



Wall rail bracket

Chrome (standard)

Upgrade options:

- Black
- White

All images are for illustration purposes and are to be used as a guide only. Dimensions and individual stair elements may change depending on chosen house type and stair options. Collins 31 model shown. Upgraded lighting shown.

Long Island

Painted timber balusters, timber posts with flat tops and square handrail.

Balustrade location Option 1



Balustrade location Option 2



Balustrade location Option 1

Feature balustrade to ground floor only, dwarf plaster wall with MDF capping to first floor.

Balustrade location Option 2

Feature balustrade to full staircase including ground and first floor.

Stair materials

Kiln Dried Hardwood with painted risers* (included material)

Upgrade options:

Kiln Dried Hardwood
Kiln Dried Hardwood with carpet runner

*Note: carpet is not available with this balustrade option.

Handrail & wall rail

Square & painted



Wall rail bracket

Chrome (standard)

Upgrade options:

Black
White

All images are for illustration purposes and are to be used as a guide only. Dimensions and individual stair elements may change depending on chosen house type and stair options. Collins 31 model shown. Upgraded lighting shown.

Provence

Black steel twist rods with decorative timber posts and handrail.

Balustrade location Option 1



Balustrade location Option 2



Balustrade location Option 1

Feature balustrade to ground floor only, dwarf plaster wall with MDF capping to first floor.

Balustrade location Option 2

Feature balustrade to full staircase including ground and first floor.

Stair materials

Kiln Dried Hardwood (included material)*

Upgrade option:

Kiln Dried Hardwood with carpet runner

*Note: carpet is not available with this balustrade option.

Handrail & wall rail

Bullnose & stained



Wall rail bracket

Chrome (standard)

Upgrade options:

Black
White

All images are for illustration purposes and are to be used as a guide only. Dimensions and individual stair elements may change depending on chosen house type and stair options. Collins 31 model shown. Upgraded lighting shown.

Kyoto

42mm timber batten feature screen to ground floor and standard height timber balustrade.

Balustrade location Option 1



Balustrade location Option 2



Balustrade location Option 1

Feature balustrade to ground floor only, dwarf plaster wall with MDF capping to first floor.

Balustrade location Option 2

Feature balustrade to full staircase including ground and first floor.

Stair materials

Carpet (included material)

Upgrade options:

Kiln Dried Hardwood
Kiln Dried Hardwood with carpet runner

Handrail & wall rail

Square & stained



Wall rail bracket

Chrome (standard)

Upgrade options:

Black
White

All images are for illustration purposes and are to be used as a guide only. Dimensions and individual stair elements may change depending on chosen house type and stair options. Collins 31 model shown. Upgraded lighting shown.

Byron

Rebated glass panels with square timber framed handrail and posts.

Balustrade location Option 1



Balustrade location Option 2



Balustrade location Option 1

Feature balustrade to ground floor only, dwarf plaster wall with MDF capping to first floor.

Balustrade location Option 2

Feature balustrade to full staircase including ground and first floor.

Stair materials

Carpet (included material)

Upgrade options:

Kiln Dried Hardwood
Kiln Dried Hardwood with painted risers
Kiln Dried Hardwood with carpet runner

Handrail & wall rail

Square & stained



Wall rail bracket

Chrome (standard)

Upgrade options:

Black
White

All images are for illustration purposes and are to be used as a guide only. Dimensions and individual stair elements may change depending on chosen house type and stair options. Collins 31 model shown. Upgraded lighting shown.

Bordeaux

Black oval steel balustrade with timber decorative posts and stained timber handrail

Balustrade location Option 1



Balustrade location Option 2



Balustrade location Option 1

Feature balustrade to ground floor only, dwarf plaster wall with MDF capping to first floor.

Balustrade location Option 2

Feature balustrade to full staircase including ground and first floor.

Stair materials

Kiln Dried Hardwood (included material)*

Upgrade option:

Kiln Dried Hardwood with carpet runner

*Note: carpet is not available with this balustrade option.
Alternating pattern of balustrade may vary due to number of stairs and house design/size. Double plain rods may be required near posts.

Handrail & wall rail

Bullnose & stained



Wall rail bracket

Black (standard)

All images are for illustration purposes and are to be used as a guide only. Dimensions and individual stair elements may change depending on chosen house type and stair options. Collins 31 model shown. Upgraded lighting shown.

Rhode Island

Stained tapered timber balusters, square timber posts with round handrail

Balustrade location Option 1



Balustrade location Option 2



Balustrade location Option 1

Feature balustrade to ground floor only, dwarf plaster wall with MDF capping to first floor.

Balustrade location Option 2

Feature balustrade to full staircase including ground and first floor.

Stair materials

Kiln Dried Hardwood with painted risers (included material)*

Upgrade option:

Kiln Dried Hardwood with carpet runner

*Note: carpet is not available with this balustrade option.

Handrail & wall rail

Round & stained



Wall rail bracket

Chrome (standard)

Upgrade options:

Black
White

All images are for illustration purposes and are to be used as a guide only. Dimensions and individual stair elements may change depending on chosen house type and stair options. Collins 31 model shown. Upgraded lighting shown.

Minimalist

Minimalistic in its design and features, with subtle interplay between modern and traditional design elements.

Premium designs



Wall rail

Square & stained



Wall rail bracket

Chrome (standard)

Upgrade options:

- Black
- White

Minimalist features 5mm nosing with concealed stringers and a plaster dwarf wall with timber drop down capping.

All images are for illustration purposes and are to be used as a guide only. Dimensions and individual stair elements may change depending on chosen house type and stair options. Collins 31 model shown. Upgraded lighting shown.

Modernist

Open riser treads and custom glass balustrade makes for a sensational feature piece.



Wall rail

Square & stained



Wall rail bracket

Chrome (standard)

Upgrade option:

Black

The Modernist features open riser treads and custom glass with closed stringer and glass balustrade with timber handrail to the full staircase.

All images are for illustration purposes and are to be used as a guide only. Dimensions and individual stair elements may change depending on chosen house type and stair options. Collins 31 model shown. Upgraded lighting shown.

Abstract

An illusive stair that hones in on a modern, sleek design.



Wall rail

Square & stained



Wall rail bracket

Chrome (standard)

Upgrade options:

Black
White

The Abstract features 5mm nosing with a concealed wall stringer and feature zig zag sandwiched outer stringer holding the glass balustrade with timber handrail and posts.

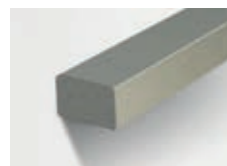
All images are for illustration purposes and are to be used as a guide only. Dimensions and individual stair elements may change depending on chosen house type and stair options. Collins 31 model shown. Upgraded lighting shown.

Contemporary

Combining wonderfully rich and raw materials, the Contemporary is an elegant and bold feature for your home.



Wall rail
Square & stainless steel



Wall rail bracket
Chrome (standard)

Upgrade options:
Black etch steel handrail & wall rail
Black wall bracket

The open stair comprises of a closed stringer and glass balustrade with stainless steel square handrail.

All images are for illustration purposes and are to be used as a guide only. Dimensions and individual stair elements may change depending on chosen house type and stair options. Collins 31 model shown. Upgraded lighting shown.

Industrial

A contemporary design that is a bold ensemble with a striking presence.



Wall rail
Square & stained



Wall rail bracket
Chrome (standard)

Upgrade option:
Black

The open stair features an exposed central steel stringer and is paired with the Berlin balustrade.

All images are for illustration purposes and are to be used as a guide only. Dimensions and individual stair elements may change depending on chosen house type and stair options. Collins 31 model shown. Upgraded lighting shown.

Nouveau

With its linear forms and warm tones, Nouveau makes for a notable contemporary staircase.



Wall rail
Square & black etch steel

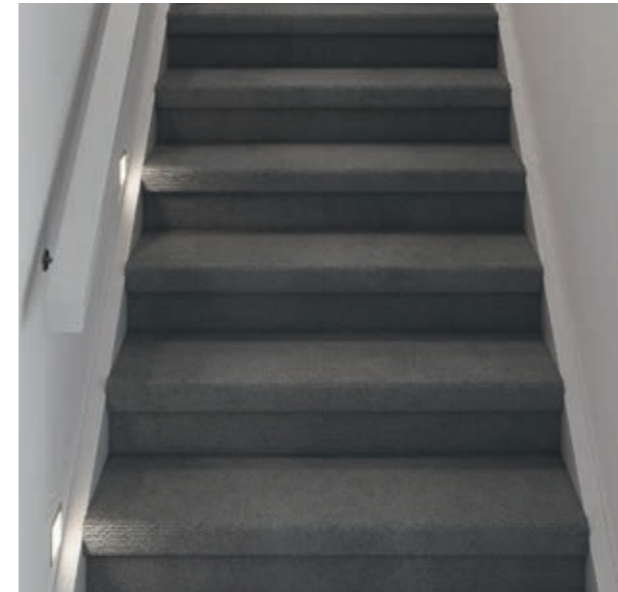


Wall rail bracket
Chrome (standard)

Upgrade option:
Black

The open stair showcases an exposed central steel stringer with glass balustrade, black glass patch fittings and black painted steel handrail.

Staircase material options



Carpet



Kiln Dried Hardwood



Kiln Dried Hardwood with painted risers



Kiln Dried Hardwood with carpet runners

Bottom tread addition



Add square bullnose feature bottom tread

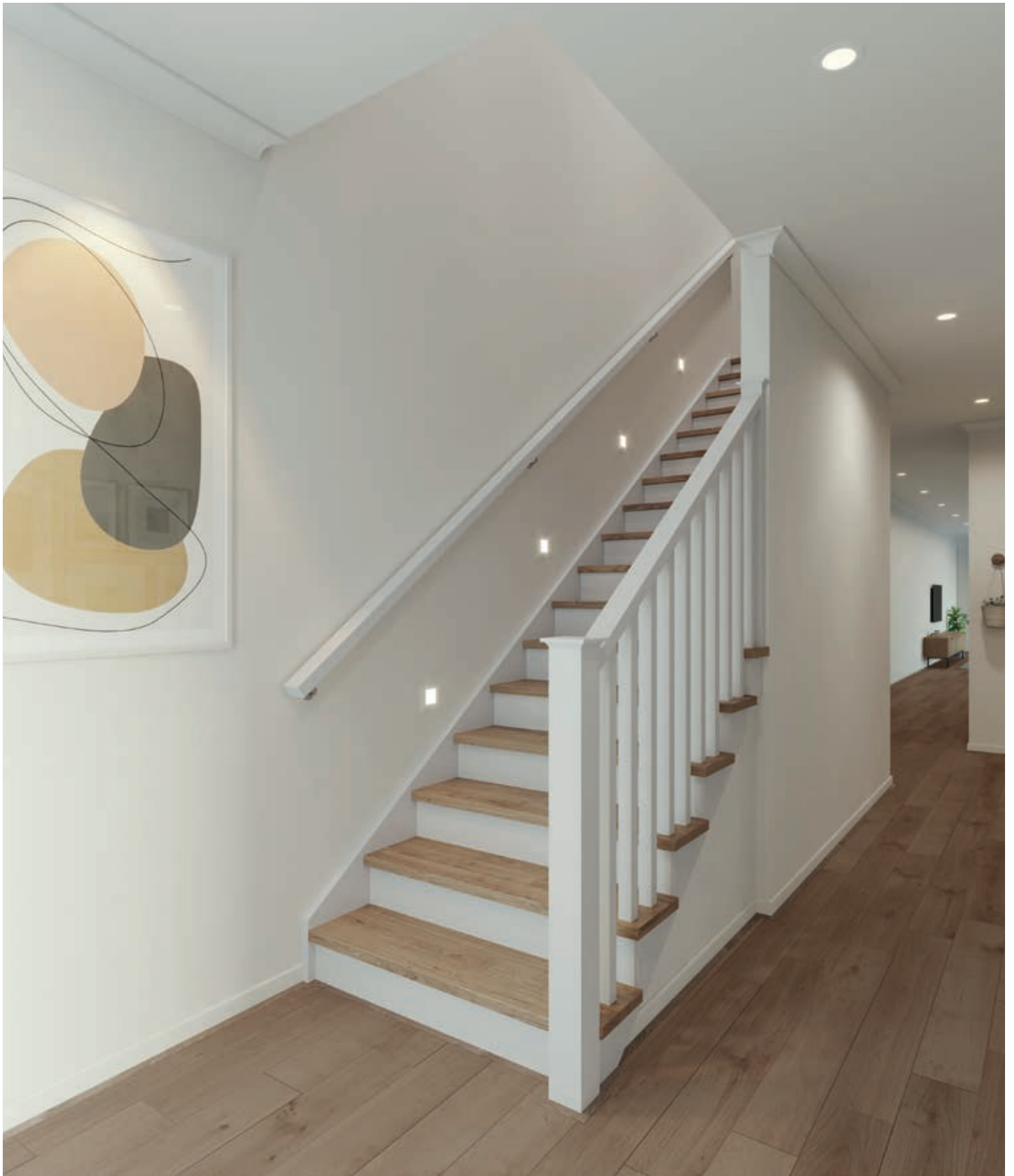
Bottom tread only applicable with the following balustrade designs: Santiago, Hampton, Miami, Dubai, Provence, Long Island and Berlin.

Staircase glossary

When you're not in the know, staircase terminology can be complex. Below we've outlined some common terms.



- 1 Riser
- 2 Tread
- 3 Cut Stringer
- 4 Closed Stringer
- 5 Closed Flight
- 6 Landing
- 7 Half Post
- 8 Open Flight
- 9 Capping
- 10 Bracket
- 11 Wall Rail
- 12 Flight Balustrade
- 13 Winders
- 14 Flight Rail
- 15 Level Balustrade
- 16 Newel Post
- 17 Level Rail
- 18 Fascia



Explore our home designs at
boutiquehomes.com.au

boutique
homes

Speak with a consultant
9674 4500

Disclaimer ©2026, all plans are protected by copyright and are owned by ABN Group Pty Ltd. Plans are based on a modern facade. Images used in this brochure are for illustrative purposes only and may depict fixtures, finishes, features, furnishings, lighting and landscaping not included in standard pricing or supplied by Boutique Homes including, but not limited to, flooring, 2550mm high ceilings. For more information on the pricing and specification of these products please contact one of our New Homes Consultants. Boutique Homes may at its discretion determine how long it wants to offer the products set out this brochure. Boutique Homes is entitled to vary all its products and pricing at its discretion at any time. See BoutiqueHomes.com.au for further details. The building practitioner is ABN Group (Vic) Pty Ltd t/as Boutique Homes, registration number CBD-U 49215. All information contained within this brochure was accurate at time of publication June 2026. BH0709