

U-shaped  
*designs*

**boutique**  
homes



- 4 U-shaped open to bottom**
- 5 Standard staircase
- 6 Balustrade upgrade options
- 7 Santorini
- 8 Santiago
- 9 Oslo
- 10 Hampton
- 11 Berlin
- 12 Long Island
- 13 Provence
- 14 Kyoto
- 15 Byron
- 16 Bordeaux
- 17 Rhode Island
- 18 Premium designs**
- 19 Minimalist
- 20 Modernist
- 21 Abstract
- 22 Contemporary
- 23 Industrial
- 24 Nouveau

- 26 U-shaped closed to bottom**
- 27 Standard staircase
- 28 Balustrade upgrade options
- 29 Santiago
- 30 Oslo
- 31 Hampton
- 32 Berlin
- 33 Long Island
- 34 Provence
- 35 Kyoto
- 36 Byron
- 37 Bordeaux
- 38 Rhode Island
- 40 Premium designs**
- 41 Minimalist
- 42 Modernist
- 43 Abstract
- 44 Contemporary
- 45 Industrial
- 46 Nouveau

Discover a range of staircase styles to complement your style. We've partnered with Australia's leading staircase specialists to offer a selection that effortlessly blends form and function.

- 47 STAIR MATERIAL OPTIONS**
- 48 FEATURE TREAD**
- 49 GLOSSARY**

U-shaped  
*winders at top*



All images are for illustration purposes and are to be used as a guide only. Dimensions and individual stair elements may change depending on chosen house type and stair options. Airlie 33 model shown. Upgraded lighting shown.

## Standard staircase

Carpet to stairs and solid plaster wall to ground floor. Dwarf plaster wall with painted MDF capping to centre run and first floor return.



**Stair materials**  
Carpet (included material)

**Upgrade options:**  
Kiln Dried Hardwood  
Kiln Dried Hardwood with painted risers  
Kiln Dried Hardwood with carpet runner

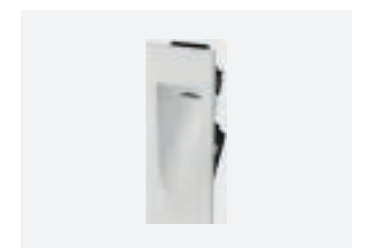
**Wall rail**  
Square & painted



**Wall rail bracket**  
Chrome (standard)

**Upgrade options:**  
Black  
White

**Standard lighting inclusion**  
Lumi Lychee aluminium LED step light's (choice of white or black)



All images are for illustration purposes and are to be used as a guide only. Dimensions and individual stair elements may change depending on chosen house type and stair options. Airlie 33 model shown. Upgraded lighting shown.

# Balustrade upgrade options



Santorini Page 9



Santiago Page 10



Oslo Page 11



Hampton Page 12



Berlin Page 13



Long Island Page 14



Provence Page 15



Kyoto Page 16



Byron Page 17



Bordeaux Page 18



Rhode Island Page 19

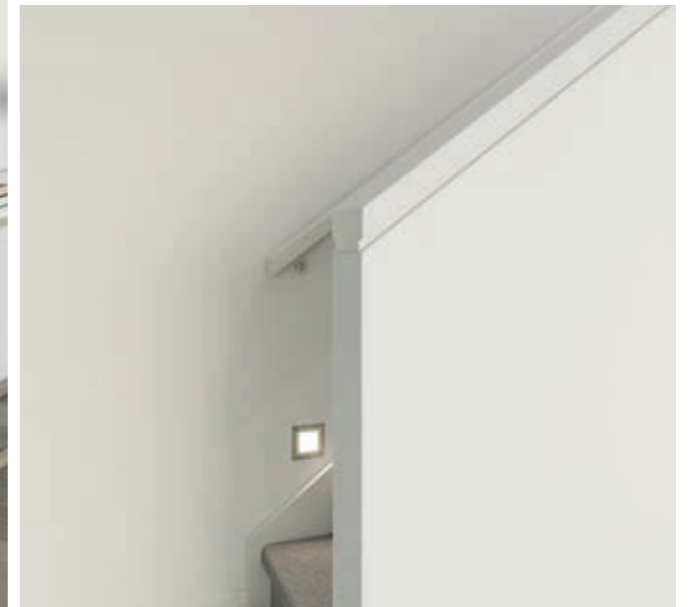
All images are for illustration purposes and are to be used as a guide only. Dimensions and individual stair elements may change depending on chosen house type and stair options. Airlie 33 model shown. Upgraded lighting shown.

# Santorini

Dwarf plaster wall with painted MDF capping.



Wall rail to top flight required



**Balustrade location**

Dwarf plaster wall with MDF capping to full staircase including ground floor, centre run and first floor return.

**Stair materials**

Carpet (included material)

**Upgrade options:**

- Kiln Dried Hardwood
- Kiln Dried Hardwood with painted risers
- Kiln Dried Hardwood with carpet runner

**Wall rail**

Square & painted



**Wall rail bracket**

Chrome (standard)

**Upgrade options:**

- Black
- White

All images are for illustration purposes and are to be used as a guide only. Dimensions and individual stair elements may change depending on chosen house type and stair options. Airlie 33 model shown. Upgraded lighting shown.

# Santiago

Black steel rods with painted timber posts and handrail.

Balustrade location Option 1



Balustrade location Option 2



**Balustrade location Option 1**

Feature balustrade to ground floor only, dwarf plaster wall with MDF capping to centre run & first floor return.

**Balustrade location Option 2**

Feature balustrade to full staircase including ground floor, centre run & first floor return.

**Stair materials**

Carpet (included material)

**Upgrade options:**

- Kiln Dried Hardwood
- Kiln Dried Hardwood with painted risers
- Kiln Dried Hardwood with carpet runner

**Handrail & wall rail**

Round & painted



**Wall rail bracket**

Chrome (standard)

**Upgrade options:**

- Black
- White

# Oslo

Dwarf plaster wall with Kiln Dried Hardwood drop down capping.



**Balustrade location**

Feature balustrade to full staircase including ground floor, centre run & first floor return.

**Stair materials**

Carpet (included material)

**Upgrade options:**

- Kiln Dried Hardwood
- Kiln Dried Hardwood with painted risers
- Kiln Dried Hardwood with carpet runner

**Wall rail**

Square & stained



**Wall rail bracket**

Chrome (standard)

**Upgrade options:**

- Black
- White

# Hampton

42mm square painted timber balusters and 90mm timber posts with flat caps.

Balustrade location Option 1



Balustrade location Option 2



**Balustrade location Option 1**

Feature balustrade to ground floor only, dwarf plaster wall with MDF capping to centre run & first floor return.

**Balustrade location Option 2**

Feature balustrade to full staircase including ground floor, centre run & first floor return.

**Stair materials**

Carpet (included material)

**Upgrade options:**

Kiln Dried Hardwood  
Kiln Dried Hardwood with painted risers  
Kiln Dried Hardwood with carpet runner

**Handrail & wall rail**

Square & painted



**Wall rail bracket**

Chrome (standard)  
Upgrade options:  
Black  
White

All images are for illustration purposes and are to be used as a guide only. Dimensions and individual stair elements may change depending on chosen house type and stair options. Airlie 33 model shown. Upgraded lighting shown.

# Berlin

Black steel blades with black steel square posts and timber handrail.

Balustrade location Option 1



Balustrade location Option 2



**Balustrade location Option 1**

Feature balustrade to ground floor only, dwarf plaster wall with MDF capping to centre run & first floor return.

**Balustrade location Option 2**

Feature balustrade to full staircase including ground floor, centre run & first floor return.

**Stair materials**

Kiln Dried Hardwood (included material)\*

**Upgrade option:**

Kiln Dried Hardwood with carpet runner

\*Note: carpet is not available with this balustrade option.

**Handrail & wall rail**

Square & stained



**Wall rail bracket**

Chrome (standard)  
**Upgrade options:**  
Black  
White

All images are for illustration purposes and are to be used as a guide only. Dimensions and individual stair elements may change depending on chosen house type and stair options. Airlie 33 model shown. Upgraded lighting shown.

# Long Island

Painted timber balusters, timber posts with flat tops and square handrail.

Balustrade location Option 1



Balustrade location Option 2



### Balustrade location Option 1

Feature balustrade to ground floor only, dwarf plaster wall with MDF capping to centre run & first floor return.

### Balustrade location Option 2

Feature balustrade to full staircase including ground floor, centre run & first floor return.

### Stair materials

Kiln Dried Hardwood with painted risers\* (included material)

### Upgrade options:

Kiln Dried Hardwood  
Kiln Dried Hardwood with carpet runner

\*Note: carpet is not available with this balustrade option.

### Handrail & wall rail

Square & painted



### Wall rail bracket

Chrome (standard)

### Upgrade options:

Black  
White

All images are for illustration purposes and are to be used as a guide only. Dimensions and individual stair elements may change depending on chosen house type and stair options. Airlie 33 model shown. Upgraded lighting shown.

# Provence

Black steel twist rods with decorative timber posts and handrail.

Balustrade location Option 1



Balustrade location Option 2



### Balustrade location Option 1

Feature balustrade to ground floor only, dwarf plaster wall with MDF capping to centre run & first floor return.

### Balustrade location Option 2

Feature balustrade to full staircase including ground floor, centre run & first floor return.

### Stair materials

Kiln Dried Hardwood (included material)\*

### Upgrade option:

Kiln Dried Hardwood with carpet runner

\*Note: carpet is not available with this balustrade option.

### Handrail & wall rail

Bullnose & stained



### Wall rail bracket

Chrome (standard)

### Upgrade options:

Black  
White

All images are for illustration purposes and are to be used as a guide only. Dimensions and individual stair elements may change depending on chosen house type and stair options. Airlie 33 model shown. Upgraded lighting shown.

# Kyoto

42mm timber batten feature screen to ground floor and standard height timber balustrade.

Balustrade location Option 1



Balustrade location Option 2



**Balustrade location Option 1**

Feature balustrade to ground floor only, dwarf plaster wall with MDF capping to centre run & first floor return.

**Balustrade location Option 2**

Feature balustrade to full staircase including ground floor, centre run & first floor return.

**Stair materials**

Carpet (included material)

**Upgrade options:**

Kiln Dried Hardwood  
Kiln Dried Hardwood with carpet runner

**Handrail & wall rail**

Square & stained



**Wall rail bracket**

Chrome (standard)

**Upgrade options:**

Black  
White

All images are for illustration purposes and are to be used as a guide only. Dimensions and individual stair elements may change depending on chosen house type and stair options. Airlie 33 model shown. Upgraded lighting shown.

# Byron

Rebated glass panels with square timber framed handrail and posts.

Balustrade location Option 1



Balustrade location Option 2



**Balustrade location Option 1**

Feature balustrade to ground floor only, dwarf plaster wall with MDF capping to centre run & first floor return.

**Balustrade location Option 2**

Feature balustrade to full staircase including ground floor, centre run & first floor return.

**Stair materials**

Carpet (included material)

**Upgrade options:**

Kiln Dried Hardwood  
Kiln Dried Hardwood with painted risers  
Kiln Dried Hardwood with carpet runner

**Handrail & wall rail**

Square & stained



**Wall rail bracket**

Chrome (standard)

**Upgrade options:**

Black  
White

All images are for illustration purposes and are to be used as a guide only. Dimensions and individual stair elements may change depending on chosen house type and stair options. Airlie 33 model shown. Upgraded lighting shown.

# Bordeaux

Black oval steel balustrade with timber decorative posts and stained timber handrail.

Balustrade location Option 1



Balustrade location Option 2



**Balustrade location Option 1**

Feature balustrade to ground floor only, dwarf plaster wall with MDF capping to centre run & first floor return.

**Balustrade location Option 2**

Feature balustrade to full staircase including ground floor, centre run & first floor return.

**Stair materials**

Kiln Dried Hardwood (included material)\*

**Upgrade option:**

Kiln Dried Hardwood with carpet runner

\*Note: carpet is not available with this balustrade option.  
Alternating pattern of balustrade may vary due to number of stairs and house design/size. Double plain rods may be required near posts.

**Handrail & wall rail**

Bullnose & stained



**Wall rail bracket**

Black (standard)

All images are for illustration purposes and are to be used as a guide only. Dimensions and individual stair elements may change depending on chosen house type and stair options. Airlie 33 model shown. Upgraded lighting shown.

# Rhode Island

Stained tapered timber balusters, square timber posts with round handrail.

Balustrade location Option 1



Balustrade location Option 2



**Balustrade location Option 1**

Feature balustrade to ground floor only, dwarf plaster wall with MDF capping to centre run & first floor return.

**Balustrade location Option 2**

Feature balustrade to full staircase including ground floor, centre run & first floor return.

**Stair materials**

Kiln Dried Hardwood with painted risers (included material)\*

**Upgrade option:**

Kiln Dried Hardwood with carpet runner

\*Note: carpet is not available with this balustrade option.

**Handrail & wall rail**

Round & stained



**Wall rail bracket**

Chrome (standard)

**Upgrade options:**

Black  
White

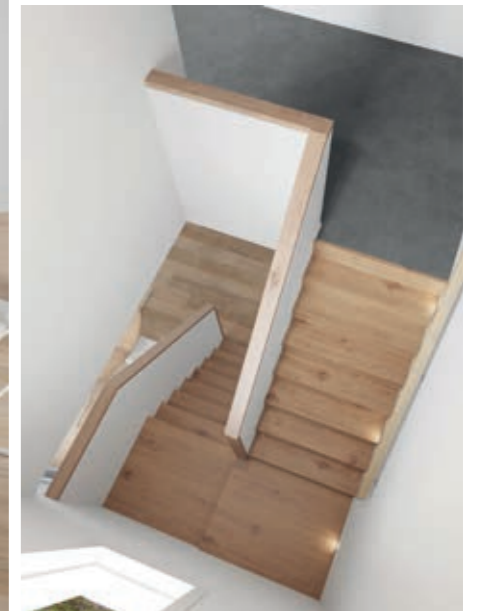
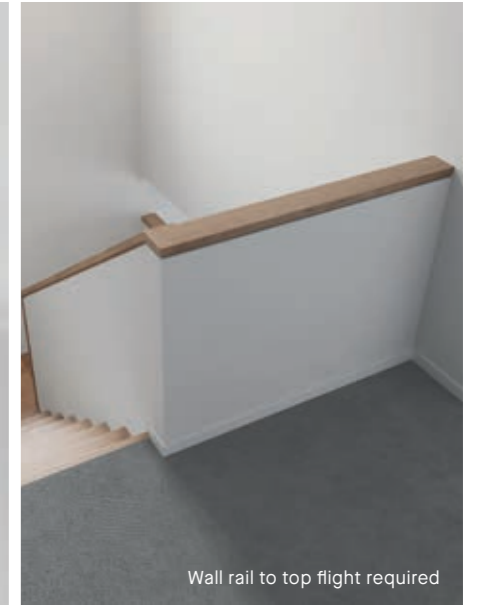
All images are for illustration purposes and are to be used as a guide only. Dimensions and individual stair elements may change depending on chosen house type and stair options. Airlie 33 model shown. Upgraded lighting shown.

Premium  
*designs*

U-SHAPED  
OPEN TO BOTTOM

## Minimalist

Minimalistic in its design and features, with subtle interplay between modern and traditional design elements.



### Wall rail

Square & stained



### Wall rail bracket

Chrome (standard)

### Upgrade options:

Black  
White

Minimalist features 5mm nosing with concealed stringers and a plaster dwarf wall with timber drop down capping.

# Modernist

Open riser treads and custom glass balustrade makes for a sensational feature piece.



## Handrail

Square & stained



The Modernist features open riser treads and custom glass with closed stringer and glass balustrade with timber handrail to the full staircase.

# Abstract

Abstract is an illusive stair that hones in on a modern, sleek design.



## Handrail

Square & stained



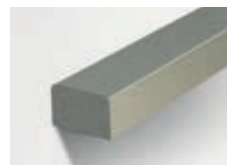
The stairs feature 5mm nosing with a concealed wall stringer and feature zig zag sandwiched outer stringer holding the glass balustrade with timber handrail and posts.

# Contemporary

Combining wonderfully rich and raw materials, the Contemporary is an elegant and bold feature for your home.



**Handrail**  
Square & Stainless steel



The open stair comprises of a closed stringer and glass balustrade with stainless steel square handrail.

All images are for illustration purposes and are to be used as a guide only. Dimensions and individual stair elements may change depending on chosen house type and stair options. Airlie 33 model shown. Upgraded lighting shown.

# Industrial

A contemporary design that is a bold ensemble with a striking presence.



**Handrail**  
Square & stained



The open stair features an exposed central steel stringer and is paired with the Berlin balustrade.

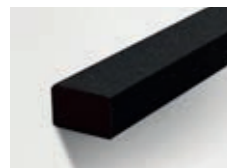
All images are for illustration purposes and are to be used as a guide only. Dimensions and individual stair elements may change depending on chosen house type and stair options. Airlie 33 model shown. Upgraded lighting shown.

# Nouveau

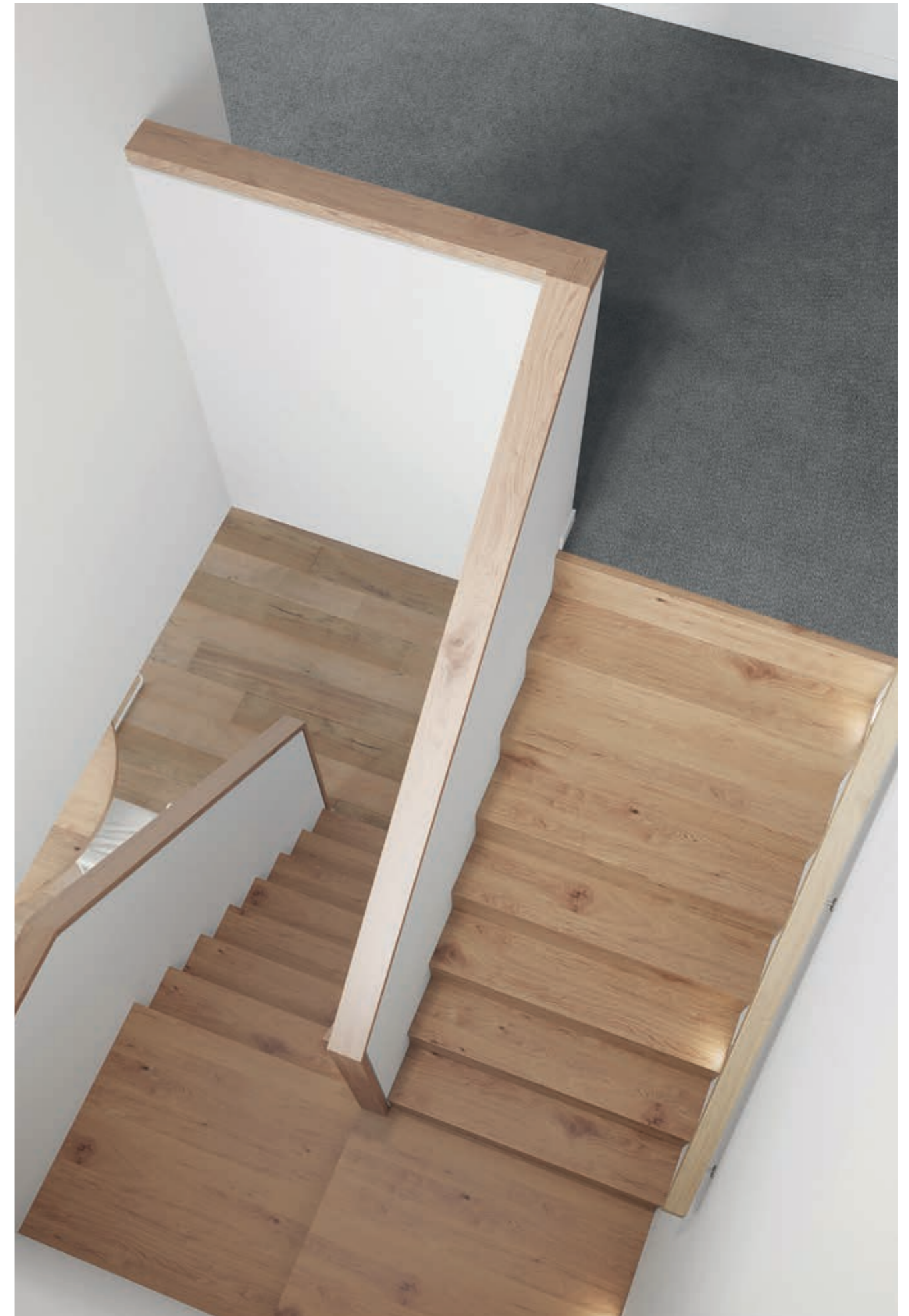
With its linear forms and warm tones, Nouveau makes for a notable contemporary staircase.



**Handrail**  
Square & black etch steel



The open stair showcases an exposed central steel stringer with glass balustrade, black glass patch fittings and black painted steel handrail.



# U-shaped *closed to bottom*



All images are for illustration purposes and are to be used as a guide only. Dimensions and individual stair elements may change depending on chosen house type and stair options. Mayfair 43 model shown. Upgraded lighting shown.

## Standard staircase

Carpet to stairs and solid plaster wall to ground floor. Dwarf plaster wall with painted MDF capping to centre run and first floor return.



**Stair materials**  
Carpet (included material)

**Upgrade options:**  
Kiln Dried Hardwood  
Kiln Dried Hardwood with painted risers  
Kiln Dried Hardwood with carpet runner

**Wall rail**  
Square & painted

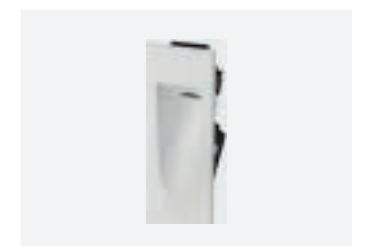


**Wall rail bracket**  
Chrome (standard)

**Upgrade options:**  
Black  
White



**Standard lighting inclusion**  
Lumi Lychee aluminium LED step light's (choice of white or black)



All images are for illustration purposes and are to be used as a guide only. Dimensions and individual stair elements may change depending on chosen house type and stair options. Mayfair 43 model shown. Upgraded lighting shown.

# Balustrade upgrade options



Santiago Page 31



Oslo Page 32



Hampton Page 33



Berlin Page 34



Long Island Page 35



Provence Page 36



Kyoto Page 37



Byron Page 38



Bordeaux Page 39



Rhode Island Page 40

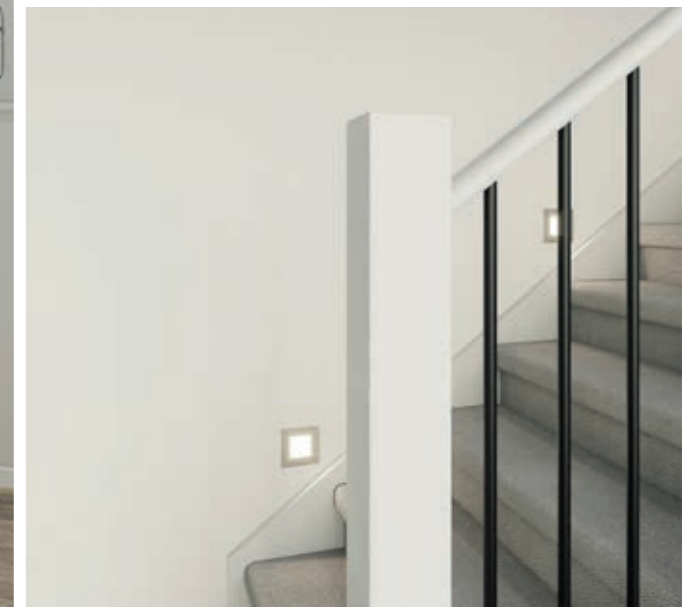
All images are for illustration purposes and are to be used as a guide only. Dimensions and individual stair elements may change depending on chosen house type and stair options. Mayfair 43 model shown. Upgraded lighting shown.

# Santiago

Black steel rods with painted timber posts and handrail.



Wall rail to bottom flight required



**Balustrade location**

Feature balustrade to centre run & first floor return.

**Stair materials**

Carpet (included material)

**Upgrade options:**

- Kiln Dried Hardwood
- Kiln Dried Hardwood with painted risers
- Kiln Dried Hardwood with carpet runner

**Handrail & wall rail**

Round & painted



**Wall rail bracket**

Chrome (standard)

**Upgrade options:**

- Black
- White

All images are for illustration purposes and are to be used as a guide only. Dimensions and individual stair elements may change depending on chosen house type and stair options. Mayfair 43 model shown. Upgraded lighting shown.

# Oslo

Dwarf plaster wall with Kiln Dried Hardwood drop down capping.



**Balustrade location**

Feature balustrade to centre run & first floor return.

**Stair materials**

Carpet (included material)

**Upgrade options:**

- Kiln Dried Hardwood
- Kiln Dried Hardwood with painted risers
- Kiln Dried Hardwood with carpet runner

**Wall rail**

Square & stained



**Wall rail bracket**

Chrome (standard)

**Upgrade options:**

- Black
- White

All images are for illustration purposes and are to be used as a guide only. Dimensions and individual stair elements may change depending on chosen house type and stair options. Mayfair 43 model shown. Upgraded lighting shown.

# Hampton

42mm square painted timber balusters and 90mm timber posts with flat caps.



**Balustrade location**

Feature balustrade to centre run & first floor return.

**Stair materials**

Carpet (included material)

**Upgrade options:**

- Kiln Dried Hardwood
- Kiln Dried Hardwood with painted risers
- Kiln Dried Hardwood with carpet runner

**Handrail & wall rail**

Square & painted



**Wall rail bracket**

Chrome (standard)

**Upgrade options:**

- Black
- White

All images are for illustration purposes and are to be used as a guide only. Dimensions and individual stair elements may change depending on chosen house type and stair options. Mayfair 43 model shown. Upgraded lighting shown.

# Berlin

Black steel blades with black steel square posts and timber handrail.



**Balustrade location**

Feature balustrade to centre run & first floor return.

**Stair materials**

Kiln Dried Hardwood (included material)\*

**Upgrade option:**

Kiln Dried Hardwood with carpet runner

\*Note: carpet is not available with this balustrade option.

**Handrail & wall rail**

Square & stained



**Wall rail bracket**

Chrome (standard)

**Upgrade options:**

Black  
White

All images are for illustration purposes and are to be used as a guide only. Dimensions and individual stair elements may change depending on chosen house type and stair options. Mayfair 43 model shown. Upgraded lighting shown.

# Long Island

Painted timber balusters, timber posts with flat tops and square handrail.



**Balustrade location**

Feature balustrade to centre run & first floor return.

**Stair materials**

Kiln Dried Hardwood with painted risers\* (included material)

**Upgrade options:**

Kiln Dried Hardwood  
Kiln Dried Hardwood with carpet runner

\*Note: carpet is not available with this balustrade option.

**Handrail & wall rail**

Square & painted



**Wall rail bracket**

Chrome (standard)

**Upgrade options:**

Black  
White

All images are for illustration purposes and are to be used as a guide only. Dimensions and individual stair elements may change depending on chosen house type and stair options. Mayfair 43 model shown. Upgraded lighting shown.

# Provence

Black steel twist rods with decorative timber posts and handrail.



Wall rail to bottom flight required

**Balustrade location**

Feature balustrade to centre run & first floor return.

**Stair materials**

Kiln Dried Hardwood (included material)\*

**Upgrade option:**

Kiln Dried Hardwood with carpet runner

\*Note: carpet is not available with this balustrade option.

**Handrail & wall rail**

Bullnose & stained



**Wall rail bracket**

Chrome (standard)

**Upgrade options:**

- Black
- White

All images are for illustration purposes and are to be used as a guide only. Dimensions and individual stair elements may change depending on chosen house type and stair options. Mayfair 43 model shown. Upgraded lighting shown.

# Kyoto

Standard height timber balustrade. No timber screen included in this option.



Wall rail to bottom flight required

**Balustrade location**

Feature balustrade to centre run & first floor return.

**Stair materials**

Carpet (included material)

**Upgrade options:**

- Kiln Dried Hardwood
- Kiln Dried Hardwood with carpet runner

**Handrail & wall rail**

Square & stained



**Wall rail bracket**

Chrome (standard)

**Upgrade options:**

- Black
- White

All images are for illustration purposes and are to be used as a guide only. Dimensions and individual stair elements may change depending on chosen house type and stair options. Mayfair 43 model shown. Upgraded lighting shown.

# Byron

Rebated glass panels with square timber framed handrail and posts.



**Balustrade location**

Feature balustrade to centre run & first floor return.

**Stair materials**

Carpet (included material)

**Upgrade options:**

Kiln Dried Hardwood  
Kiln Dried Hardwood with carpet runner

**Handrail & wall rail**

Square & stained



**Wall rail bracket**

Chrome (standard)

**Upgrade options:**

Black  
White

# Bordeaux

Black oval steel balustrade with timber decorative posts and stained timber handrail.



**Balustrade location**

Feature balustrade to centre run & first floor return.

**Stair materials**

Kiln Dried Hardwood (included material)\*

**Upgrade option:**

Kiln Dried Hardwood with carpet runner

\*Note: carpet is not available with this balustrade option.

Alternating pattern of balustrade may vary due to number of stairs and house design/size. Double plain rods may be required near posts.

**Handrail & wall rail**

Bullnose & stained

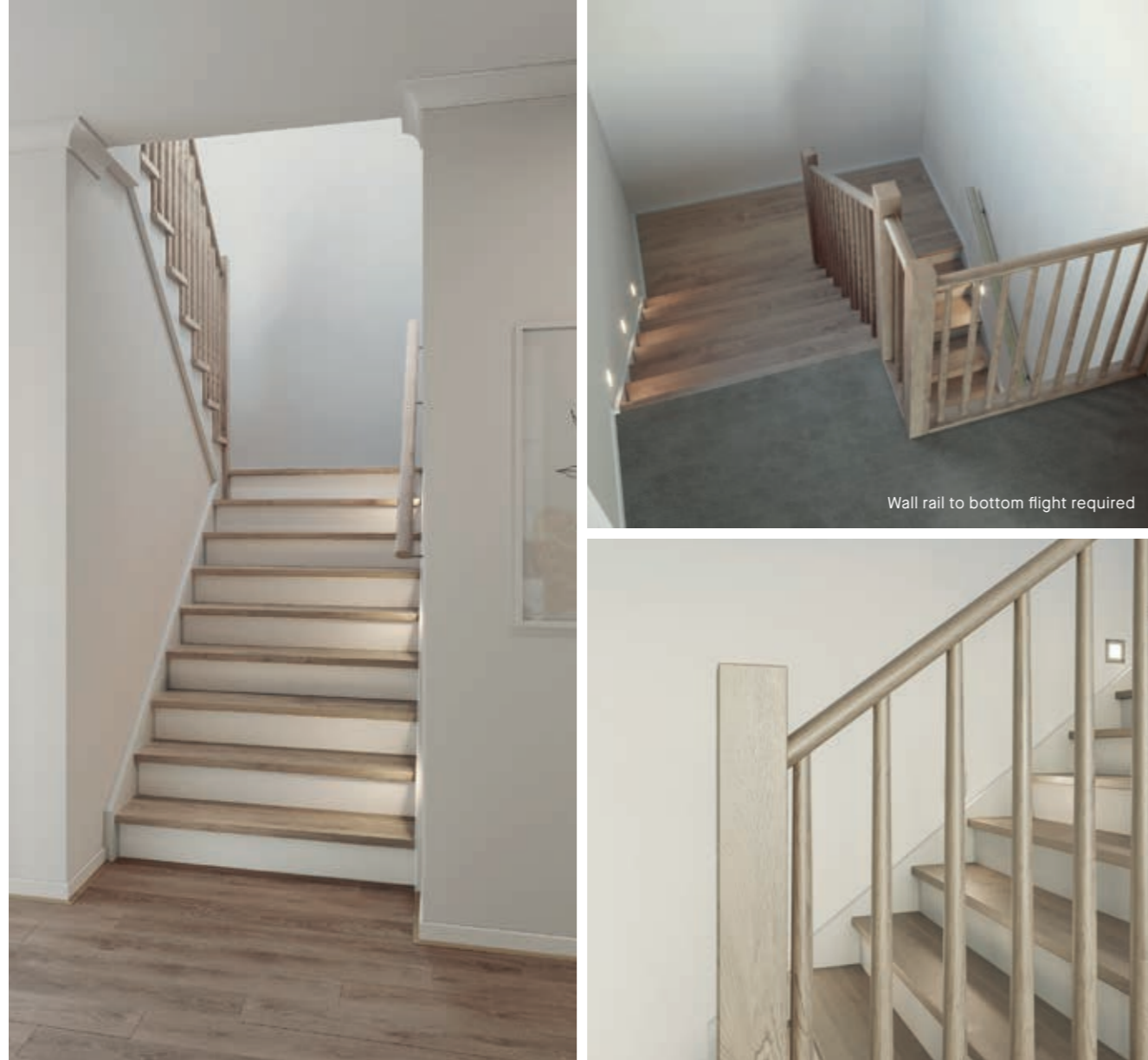


**Wall rail bracket**

Black (standard)

# Rhode Island

Stained tapered timber baluster, square timber posts with round handrail.



**Balustrade location**

Feature balustrade to centre run & first floor return.

**Stair materials**

Kiln Dried Hardwood with painted risers (included material)\*

**Upgrade option:**

Kiln Dried Hardwood with carpet runner

\*Note: carpet is not available with this balustrade option.

**Handrail & wall rail**

Round & stained



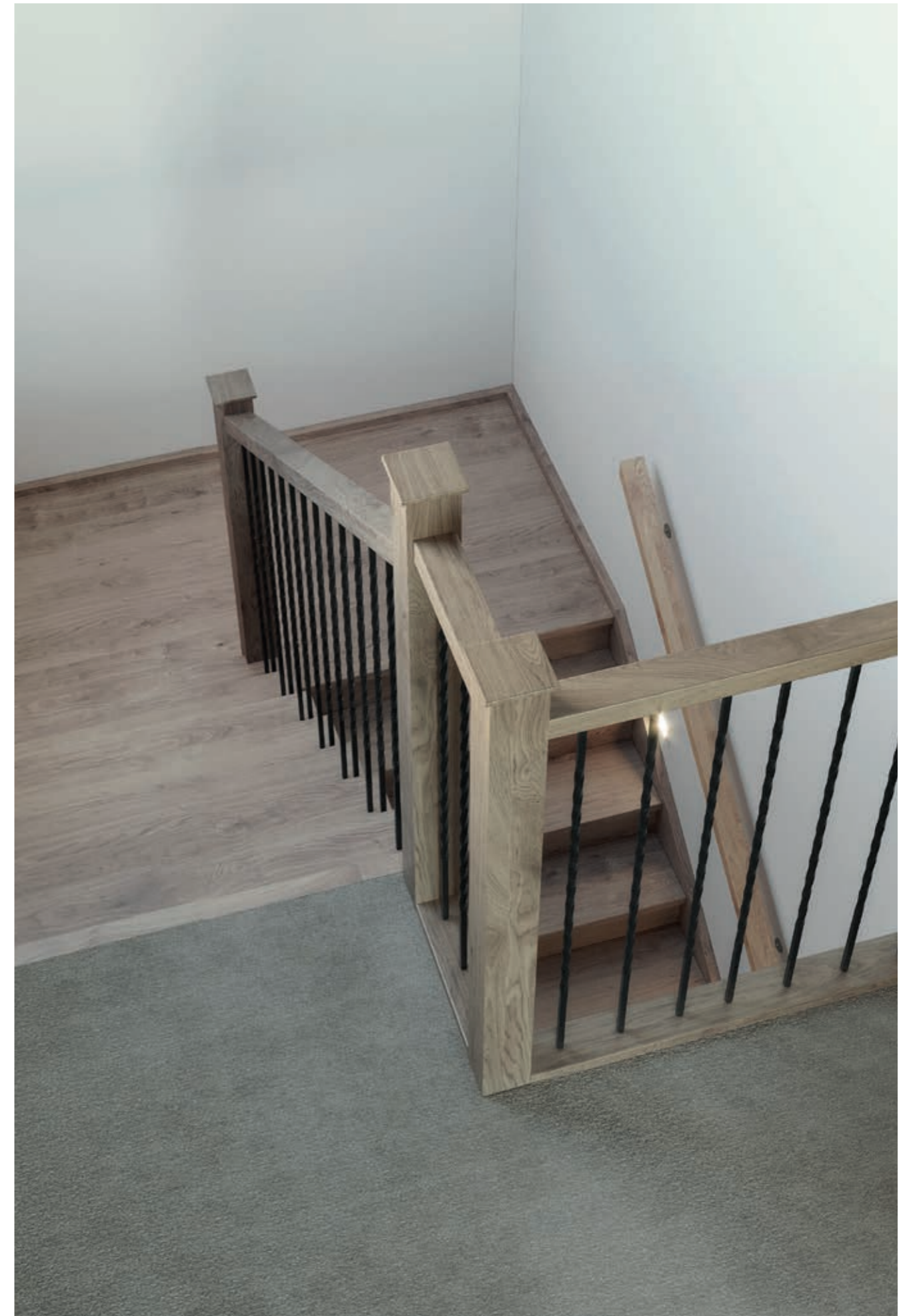
**Wall rail bracket**

Chrome (standard)

**Upgrade options:**

- Black
- White

All images are for illustration purposes and are to be used as a guide only. Dimensions and individual stair elements may change depending on chosen house type and stair options. Mayfair 43 model shown. Upgraded lighting shown.



All images are for illustration purposes and are to be used as a guide only. Dimensions and individual stair elements may change depending on chosen house type and stair options. Mayfair 43 model shown. Upgraded lighting shown.

Premium  
*designs*

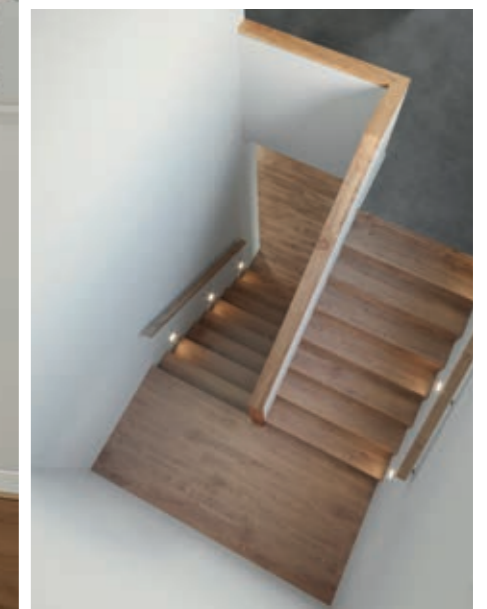
U-SHAPED  
CLOSED TO BOTTOM

## Minimalist

Minimalistic in its design and features, with subtle interplay between modern and traditional design elements.



Wall rail to bottom and top flight required



### Wall rail

Square & stained



### Wall rail bracket

Chrome (standard)

### Upgrade options:

Black  
White

Minimalist features 5mm nosing with concealed stringers and a plaster dwarf wall with timber drop down capping.

# Modernist

Open riser treads and custom glass balustrade makes for a sensational feature piece.



## Handrail

Square & stained



The Modernist features open riser treads and custom glass with closed stringer and glass balustrade with timber handrail to the full staircase.

# Abstract

Abstract is an illusive stair that hones in on a modern, sleek design.



## Handrail & wall rail

Square & stained



## Wall rail bracket

Chrome (standard)

## Upgrade options:

Black  
White

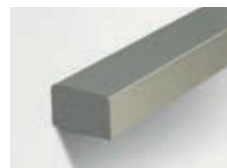
The stairs feature 5mm nosing with a concealed wall stringer and feature zig zag sandwiched outer stringer holding the glass balustrade with timber handrail and posts.

# Contemporary

Combining wonderfully rich and raw materials, the Contemporary is an elegant and bold feature for your home.



**Handrail**  
Square & stainless steel



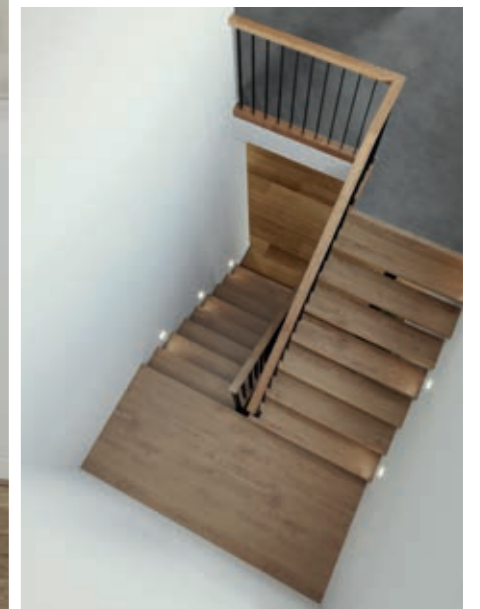
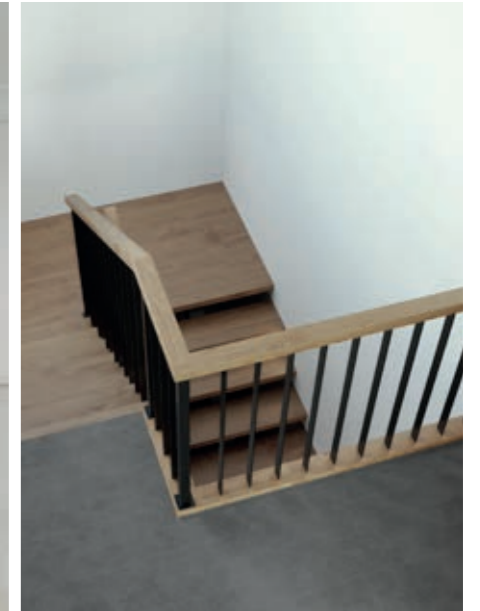
**Upgrade Options:**

- Black etch steel handrail & wall rail
- Black wall bracket

All images are for illustration purposes and are to be used as a guide only. Dimensions and individual stair elements may change depending on chosen house type and stair options. Mayfair 43 model shown. Upgraded lighting shown.

# Industrial

A contemporary design that is a bold ensemble with a striking presence.



**Handrail**  
Square & stained

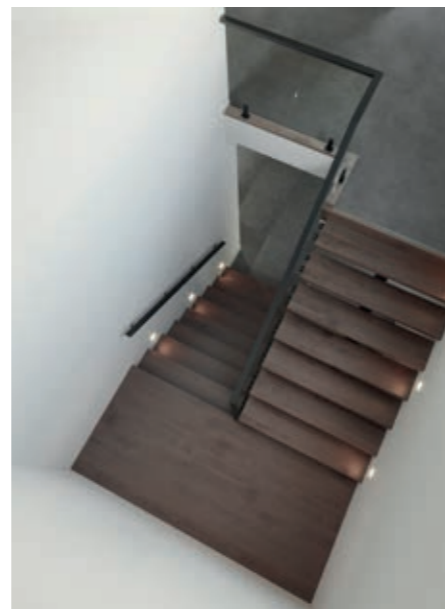


The open stair features an exposed central steel stringer and is paired with the Berlin balustrade.

All images are for illustration purposes and are to be used as a guide only. Dimensions and individual stair elements may change depending on chosen house type and stair options. Mayfair 43 model shown. Upgraded lighting shown.

# Nouveau

With its linear forms and warm tones, Nouveau makes for a notable contemporary staircase.



### Wall rail

Black painted steel handrail and wall rail



### Wall rail bracket

Chrome (standard)

### Upgrade option:

Black

The open stair showcases an exposed central steel stringer with glass balustrade, black glass patch fittings and black painted steel handrail.

# Staircase material options



Carpet



Kiln Dried Hardwood



Kiln Dried Hardwood with painted risers



Kiln Dried Hardwood with carpet runners

## Bottom tread addition



### Square bullnose feature bottom tread

Only applicable with the following balustrade designs: Santiago, Hampton, Rhode Island, Provence, Long Island and Berlin.

*Not Applicable to U-shaped closed to bottom stair shapes*



### Round bullnose feature bottom tread with scroll handrail

Only applicable with following balustrade design: Bordeaux

*Not Applicable to U-shaped closed to bottom stair shapes*

All images are for illustration purposes and are to be used as a guide only. Dimensions and individual stair elements may change depending on chosen house type and stair options. Mayfair 43 model shown. Upgraded lighting shown.

## Staircase glossary

When you're not in the know, staircase terminology can be complex. Below we've outlined some common terms.



- 1 Riser
- 2 Tread
- 3 Cut Stringer
- 4 Closed Stringer
- 5 Closed Flight
- 6 Landing
- 7 Half Post
- 8 Open Flight
- 9 Capping
- 10 Bracket
- 11 Wall Rail
- 12 Flight Balustrade
- 13 Winders
- 14 Flight Rail
- 15 Level Balustrade
- 16 Newel Post
- 17 Level Rail
- 18 Fascia

Please note this image is for illustrative purposes only. Staircase style and shape not available.



Explore our home designs at  
[boutiquehomes.com.au](https://boutiquehomes.com.au)

**boutique**  
homes

Speak with a consultant  
9674 4500

Disclaimer ©2026, all plans are protected by copyright and are owned by ABN Group Pty Ltd. Plans are based on a modern facade. Images used in this brochure are for illustrative purposes only and may depict fixtures, finishes, features, furnishings, lighting and landscaping not included in standard pricing or supplied by Boutique Homes including, but not limited to, flooring, 2550mm high ceilings. For more information on the pricing and specification of these products please contact one of our New Homes Consultants. Boutique Homes may at its discretion determine how long it wants to offer the products set out this brochure. Boutique Homes is entitled to vary all its products and pricing at its discretion at any time. See [BoutiqueHomes.com.au](https://BoutiqueHomes.com.au) for further details. The building practitioner is ABN Group (Vic) Pty Ltd t/as Boutique Homes, registration number CBD-U 49215. All information contained within this brochure was accurate at time of publication June 2026. BH0709